

Land for sale
Loughborough Road
Ruddington
Nottingham
NG11 6NX

Guide Price £1,300,000



Click for further information:-



Location



Gallery



Contact



0115 841 1155



- CALLING ALL DEVELOPERS!
- Fantastic opportunity to build two large executive homes
- Available as a site or as separate building plots
- Planning permission granted for 2, 6 bedroom dwellings
- Stamp duty savings
- Close to local amenities and Rushcliffe Country Park
- Sought-after village location
- Site walks are available
- Full plans on request
- Contact us for more information



0115 841 1155



Location



Gallery



Contact

222a Loughborough Road, [Ruddington, Nottingham, NG11 6NX](#)

Key Features

CALLING ALL DEVELOPERS!

Situated on 0.55 acres along Loughborough Road, it's currently home to a modest two-storey dwelling but is on the cusp of a remarkable transformation. With planning permission already secured, the future here looks bright and luxurious.

The approved plans envision two stunning 6-bedroom homes, each designed with privacy and comfort in mind. Both will have their own separate entrances and private driveways, providing a sense of exclusivity.

The planning permission that is approved has a size for Plot 1 (right plot) at 6,706 sqft, Plot 2 (Left plot) at 6,700 sqft.

Inside, each home is a haven of spacious, well-thought-out design:

- Kitchen/diner/lounge for casual family living and dining
- A formal lounge perfect for entertaining guests
- A cozy snug, ideal for quiet relaxation
- A dedicated office for work-from-home convenience
- A practical utility room to keep things tidy
- 6 generously-sized bedrooms, each with its own en suite for added luxury
- A double garage for secure parking and storage

Outside, the properties will feature:

- Landscaped rear gardens stretching over 21.5 meters, offering a peaceful retreat
- Sweeping views of Elms Park, adding natural beauty to the surroundings

With these plans in place, this site is set to transform into an exclusive enclave, perfect for those seeking modern luxury with a touch of tranquility.





0115 841 1155



Location

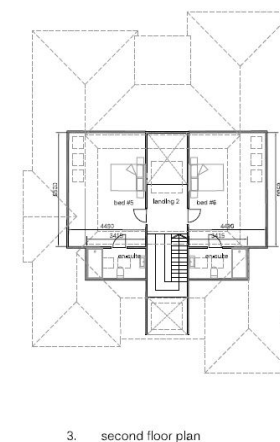
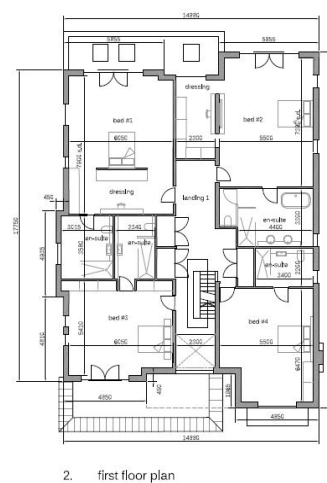
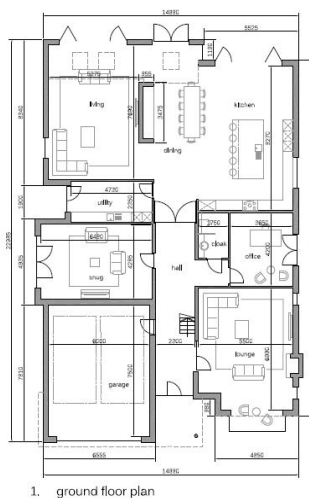
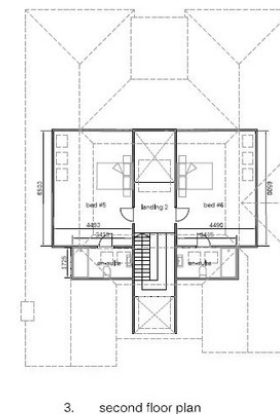
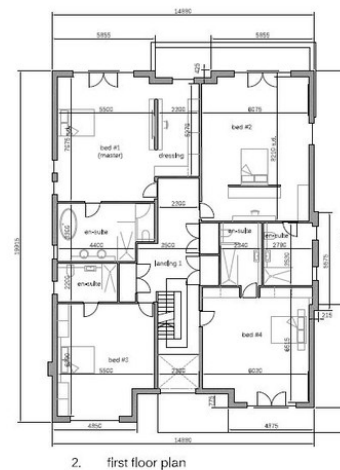


Gallery



Contact

222a Loughborough Road, [Ruddington, Nottingham, NG11 6NX](#)





0115 841 1155



Location

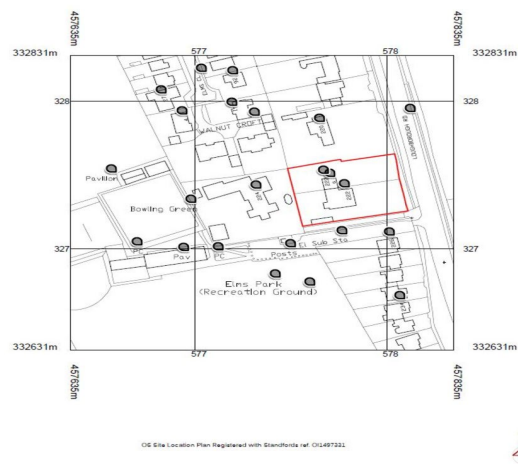


Gallery



Contact

222a Loughborough Road, [Ruddington, Nottingham, NG11 6NX](#)



Interested in this home?

Contact the FHP Living Team on 0115 841 1155

23 Bridgford Road
West Bridgford
Nottingham
NG2 6AU

1 Weekday Cross
The Lace Market
Nottingham
NG1 2GB

These sales particulars have been prepared by FHP Living on the instruction of the vendor. Services, equipment and fittings mentioned in these particulars have NOT been tested, and as such, no warranties can be given. Prospective purchasers are advised to make their own enquiries regarding such matters. These sales particulars are produced in good faith and are not intended to form part of a contract. Whilst FHP Living have taken care in obtaining internal measurements, they should only be regarded as approximate.

Purchaser information - Under the Protecting Against Money Laundering and the Proceeds of Crime Act 2002, FHP Living require any successful purchasers proceeding with a purchase to provide two forms of identification i.e. passport or photocard driving license and a recent utility bill. This evidence will be required prior to FHP Living instructing solicitors in the purchase or the sale of a property.