

# Royal Standard House

The Park  
Nottingham  
NG1 6FX

**Guide Price £320,000**



Click for further information:-



Location



Gallery



Video



Contact



0115 841 1155



- Two-bedroom, third floor apartment
- Popular location opposite Nottingham Castle
- Spacious lounge and stylish kitchen
- Modern bathroom
- Gated parking
- Landscaped communal grounds
- Accessed via communal lift or stairway
- Communal gymnasium
- Viewing essential!
- Tenure - Leasehold

0115 841 1155



Location



Gallery



Video



Contact

 fhp.living  
fhpliving.co.uk

## Standard Hill, , Nottingham, NG1 6FX

### Key Features

Located in the locally renowned Royal Standard House, this third-floor apartment offers an enviable position opposite the iconic Nottingham Castle, placing you right in the heart of the city's rich history and cultural amenities. The property's prime location provides easy access to Nottingham's bustling city centre, charming train station, and an array of shops, restaurants, and attractions, all within a short walking distance.

Nestled within a secure, gated community, this residence also benefits from beautifully landscaped communal grounds, a terrace area perfect for relaxation, and the added luxury of a small on-site gymnasium, offering convenience and a sense of exclusivity to its residents.

Upon entering the apartment via the private entrance hall, you are greeted with access to the properties two bedrooms, both benefiting from ample natural light. The stylish bathroom is equipped with a modern suite, providing a contemporary touch to the property's interior.

The spacious lounge is again bathed in natural light through its windows, offering picturesque views that change with the seasons- whether it's a winter view of Nottingham Castle or a lush, tree-lined vista in the summer.

Double doors lead to a generously sized, stylish kitchen, fitted with modern units and appliances. The windows in the kitchen ensure the space remains bright and inviting, making it a perfect area for both cooking and dining.

The property is complete with a gated parking space for one car, adding a practical advantage to this already highly desirable home.

Royal Standard House offers a perfect balance of urban living, historic charm, and modern comforts, all within a secure and prestigious setting.





0115 841 1155



Location



Gallery



Video



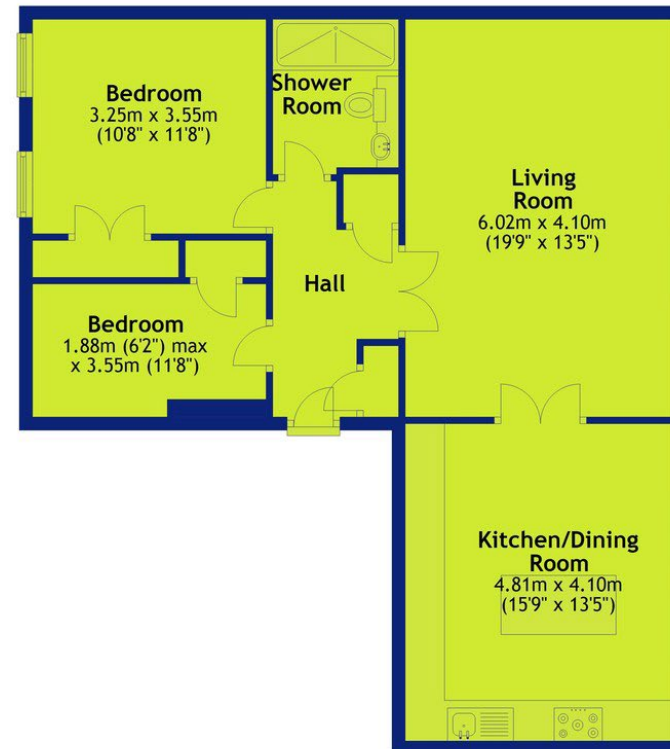
Contact

Standard Hill, , Nottingham, NG1 6FX



### Third Floor

Approx. 78.9 sq. metres (848.9 sq. feet)



Total area: approx. 78.9 sq. metres (848.9 sq. feet)

0115 841 1155

- Location
- Gallery
- Video
- Contact

Standard Hill, , Nottingham, NG1 6FX



*Interested in this home?*

Contact the FHP Living Team on 0115 841 1155

23 Bridgford Road  
West Bridgford  
Nottingham  
NG2 6AU

1 Weekday Cross  
The Lace Market  
Nottingham  
NG1 2GB

Score	Energy rating	Current	Potential
92+	A		
81-91	B		84 B
69-80	C	78 C	
55-68	D		
39-54	E		
21-38	F		
1-20	G		

These sales particulars have been prepared by FHP Living on the instruction of the vendor. Services, equipment and fittings mentioned in these particulars have NOT been tested, and as such, no warranties can be given. Prospective purchasers are advised to make their own enquiries regarding such matters. These sales particulars are produced in good faith and are not intended to form part of a contract. Whilst FHP Living have taken care in obtaining internal measurements, they should only be regarded as approximate.

Purchaser information - Under the Protecting Against Money Laundering and the Proceeds of Crime Act 2002, FHP Living require any successful purchasers proceeding with a purchase to provide two forms of identification i.e. passport or photocard driving license and a recent utility bill. This evidence will be required prior to FHP Living instructing solicitors in the purchase or the sale of a property.