

DISTINCTIVE  
HOMES  
by



Park Drive  
The Park, NG7 1DA

# Park Drive

The Park, NG7 1DA

FHP Living feels privileged to be offering for sale this beautiful period semi-detached property which perfectly marries traditional architecture with modern sophistication.





The four floors of thoughtfully designed living space make the home both spacious and intimate, ideal for a luxurious lifestyle.

Upon entering, you're greeted by a classic period entrance hall that sets the tone for the rest of the home, featuring a glazed crittall style partition that maximises the property's south / west abundant natural light.

The luxurious kitchen, a centrepiece of the home, is equipped with quality appliances, and elegant cabinetry, leading onto a bright and sunny dining room, complete with open fireplace, that serves as both a functional and social space. Adjacent is a utility room, adding practicality to the elegant setting.

The main lounge exudes warmth and charm, with French style doors, opening out onto the beautifully landscaped garden and a stunning marble fireplace serving as a focal point for relaxation and entertaining.

The lower ground floor offers a versatile retreat, containing 2 large rooms and a beautifully appointed shower room, all benefitting from underfloor heating.

Currently, the rooms are used as a cinema room, and a comfortable double bedroom. The space is further enhanced by large light wells that fill the floor with natural light. This level adds a unique dimension to the property, offering quiet seclusion from the rest of the home.





On the first floor, the master bedroom is a showstopper, boasting a panoramic view of Nottingham Castle through large dual aspect, original sash windows.

The en-suite is stylish leading to an American-style walk-in dressing room that adds a touch of glamour to daily routines.

An additional double bedroom and luxurious family bathroom complete this floor, maintaining the high standards of design and comfort.

The second floor continues to impress with three further bright and airy double bedrooms, one of which also enjoys stunning views of the castle.

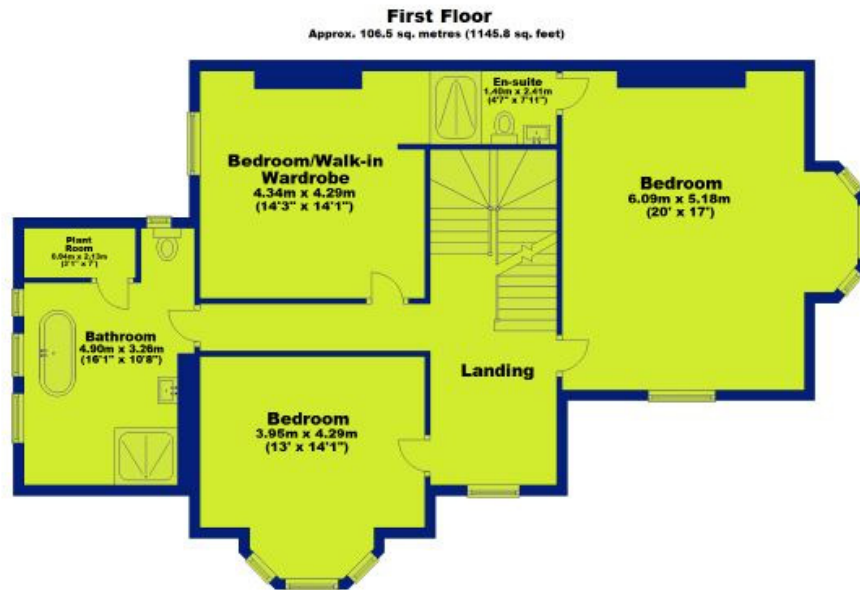
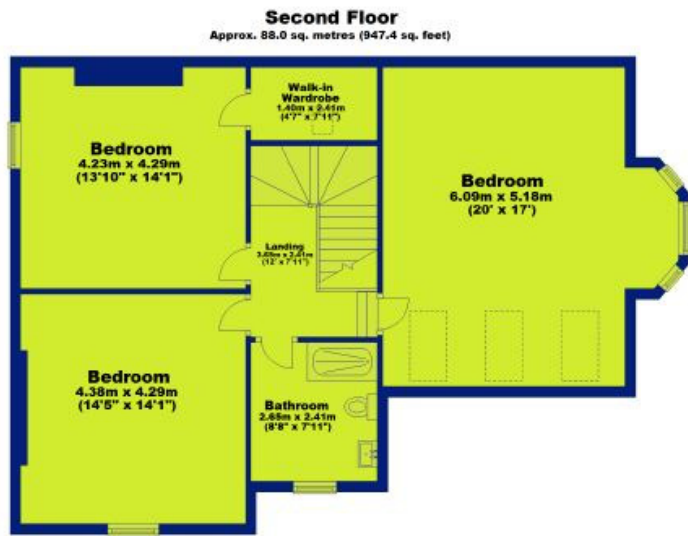
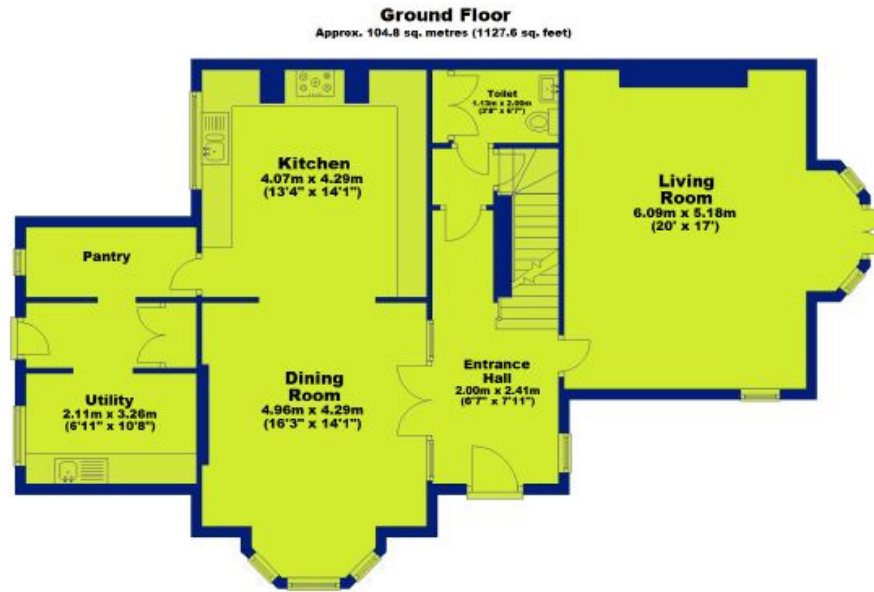
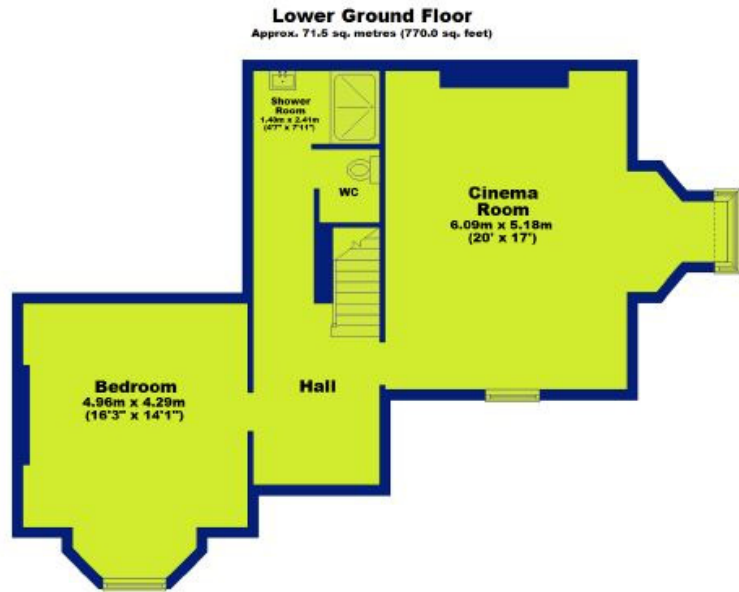
A classic modern shower room also serves this floor, ensuring every space in the home is finished to the agents view of perfection.

Externally, the property offers an impressive established walled garden, mainly laid to lawn with well-kept beds and borders, offering a serene outdoor retreat. The gated driveway provides off-road parking for two cars, complemented by an electric security gate that ensures privacy and security.

This luxurious home offers a rare blend of historical elegance and modern convenience, making it a standout in Nottingham's prestigious property market. Viewing essential!







**Total area: approx. 370.8 sq. metres (3990.9 sq. feet)**





## Distinctive Homes by FHP Living

A collection of some of the best properties available in the most sought-after areas of Nottingham, and its surrounding suburbs and villages.

[www.fhpliving.co.uk](http://www.fhpliving.co.uk)

Score	Energy rating	Current	Potential
92+	A		
81-91	B		83 B
69-80	C		
55-68	D	67 D	
39-54	E		
21-38	F		
1-20	G		

FHP, their clients and joint agents give notice that:

1. They are not authorised to make or give any representations or warranties in relation to the property either here or elsewhere, either on their own behalf of their client or otherwise. They assume no responsibility for any statement that may be made in these particulars. These particulars do not form part of any offer or contact and must not be relied upon as statements or representations of fact.
2. Any areas, measurements or distances are approximate. The text, photographs and plans are for guidance only and are not necessarily comprehensive. It should not be assumed that the property has all necessary planning, building regulation or other consents and FHP have not tested any service, equipment or facilities. Purchasers must satisfy themselves by inspection or otherwise. Figures quoted in these particulars may be subject to VAT in addition. 09/11



## Interested in this home?

Call the FHP Living Distinctive Homes Team



**Jason Cook**  
Mobile: 07876 396 010  
[jason@fhpliving.co.uk](mailto:jason@fhpliving.co.uk)

T: 0115 841 1155

23 Bridgford Road  
West Bridgford  
Nottingham NG2 6AU

1 Weekday Cross  
The Lace Market  
Nottingham NG1 2GB