

3 The Cherries

Nottingham
NG11 7HE

Guide Price £360,000



Click for further information:-



Location



Gallery



Video



Contact



0115 841 1155



- Three-bedroom mid-terraced home
- Accommodation across three floors
- Family bathroom, shower room and downstairs WC
- Open plan kitchen/ dining/ living space
- Off street parking
- Sought-after Wilford location
- Close to local amenities and transport links
- Viewing essential!
- Council Tax Band - C
- Tenure - Freehold



3 The Cherries, , Nottingham, NG11 7HE

Key Features

A modern three-story, well-presented home located in the highly sought-after area of Wilford, just a short walk from the tram stop. Conveniently positioned close to local amenities, it is located within a favoured school catchment area, making the property ideal for buyers looking for a home that is ready to move into, with the benefits of modern living. With three double bedrooms, two bathrooms & downstairs WC, early viewing is highly recommended to avoid disappointment.

The property is entered through a front entrance door into a reception hallway, which features a staircase rising to the first floor and doors leading to a front-facing study, offering office space with a view to the front. There is a contemporary two-piece WC set beneath the staircase with a modern suite. The main living space is located at the rear of the property, where you enter a lounge area that flows through to a kitchen-dining area. This space includes contemporary base units, a vaulted ceiling with a Velux window to the rear, and bi-folding doors that open to overlook the rear garden.

On the first floor, there is a generous landing leading to two double bedrooms and a modern white three-piece bathroom suite. The second floor features the main bedroom and a separate shower room with a stylish three-piece suite. You also benefit from a fully boarded out attic with stairway.

The property is situated at the end of a quiet, private driveway with allocated parking to the front and additional potential visitor parking to the far side. The front entrance features a dwarf wall with bedding plants along the pathway leading to the front door. The garden has been landscaped, including a stylish paved patio, shrub bedding, space for a shed at the rear, and gated access to a shared pathway.



0115 841 1155



Location



Gallery



Video



Contact

3 The Cherries, , Nottingham, NG11 7HE



Ground Floor

Approx. 47.7 sq. metres (513.9 sq. feet)



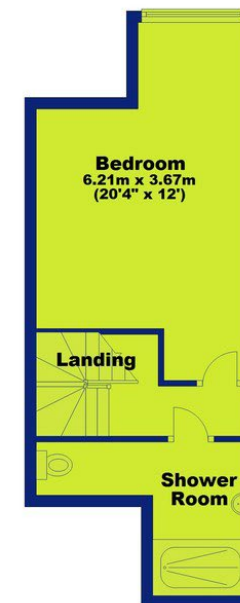
First Floor

Approx. 36.0 sq. metres (387.3 sq. feet)



Second Floor

Approx. 30.3 sq. metres (326.0 sq. feet)



Total area: approx. 114.0 sq. metres (1227.3 sq. feet)

0115 841 1155



3 The Cherries, , Nottingham, NG11 7HE



Interested in this home?

Contact the FHP Living Team on 0115 841 1155

23 Bridgford Road
West Bridgford
Nottingham
NG2 6AU

1 Weekday Cross
The Lace Market
Nottingham
NG1 2GB

Score	Energy rating	Current	Potential
92+	A		
81-91	B		89 B
69-80	C	78 C	
55-68	D		
39-54	E		
21-38	F		
1-20	G		

These sales particulars have been prepared by FHP Living on the instruction of the vendor. Services, equipment and fittings mentioned in these particulars have NOT been tested, and as such, no warranties can be given. Prospective purchasers are advised to make their own enquiries regarding such matters. These sales particulars are produced in good faith and are not intended to form part of a contract. Whilst FHP Living have taken care in obtaining internal measurements, they should only be regarded as approximate.

Purchaser information - Under the Protecting Against Money Laundering and the Proceeds of Crime Act 2002, FHP Living require any successful purchasers proceeding with a purchase to provide two forms of identification i.e. passport or photocard driving license and a recent utility bill. This evidence will be required prior to FHP Living instructing solicitors in the purchase or the sale of a property.