

83 Trent Lane

Nottingham
NG2 4DL

Offers in Excess of £390,000



Click for further information:-



Location



Gallery



Video



Contact



0115 841 1155



- Semi-detached family home with four bedrooms
- Family bathroom, two en-suites and WC
- Open plan kitchen diner
- Off street parking
- Juliet balcony and terrace to the rear
- 7 years of NHBC warranty remaining
- Close to local amenities
- Viewing essential
- Council Tax Band - D
- Tenure - Freehold

0115 841 1155



Location



Gallery



Video



Contact

83 Trent Lane, Nottingham, NG2 4DL

Key Features

Presenting a sophisticated and modern four-bedroom semi-detached residence within the coveted Pelham Waterside development in Nottingham, near the River Trent and amidst an exciting redevelopment zone. This property, boasting a remaining 7 years of NHBC warranty, is perfect for those seeking the advantages of a new home.

Welcomed by a spacious reception hall featuring a staircase leading to the first floor, a downstairs WC with a two-piece suite, and a contemporary breakfast kitchen equipped with modern appliances and sleek wall/base units. The lounge area at the rear opens to the garden, providing a view out to the garden.

The first floor hosts two double bedrooms, one adaptable as a secondary reception, and another with an en-suite shower room, along with a three-piece family bathroom.

Ascending to the second floor reveals an impressive master bedroom with a captivating corner window showcasing views towards the River Trent, a dressing area, and a contemporary en-suite. Adjacent to the landing, there's an additional bedroom and access to a roof terrace/balcony.

Externally, the front features a raised bedding area for shrubs, a blue brick block-paved path, and a driveway accommodating multiple cars with an electric charge point. A security gate leads to the rear garden with a path, patio, and space for a shed, surrounded by a lush lawn. This property is an excellent canvas for those eager to infuse their personal touch. Early viewing is imperative!



0115 841 1155



Location



Gallery

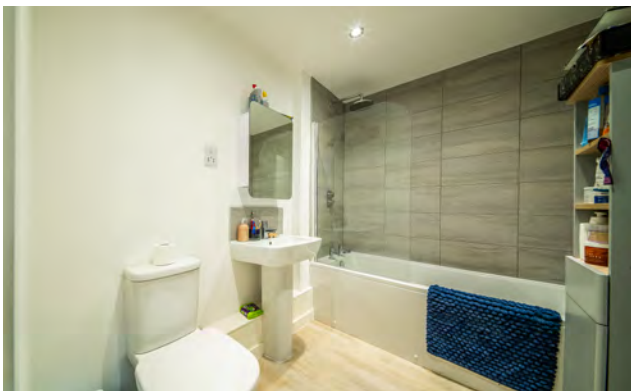


Video

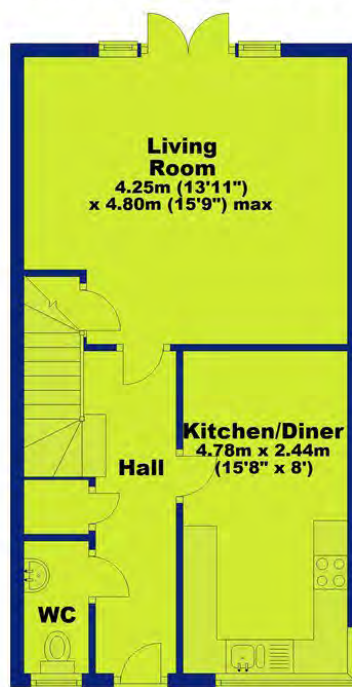


Contact

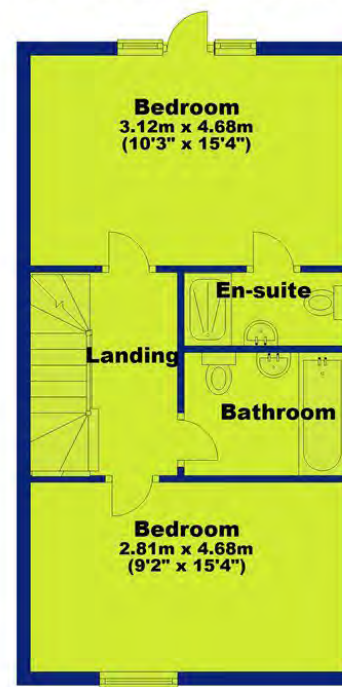
83 Trent Lane, Nottingham, NG2 4DL



Ground Floor
Approx. 43.8 sq. metres (471.3 sq. feet)



First Floor
Approx. 42.7 sq. metres (459.9 sq. feet)



Second Floor
Approx. 37.7 sq. metres (406.3 sq. feet)



Total area: approx. 124.3 sq. metres (1337.5 sq. feet)



0115 841 1155



Location



Gallery

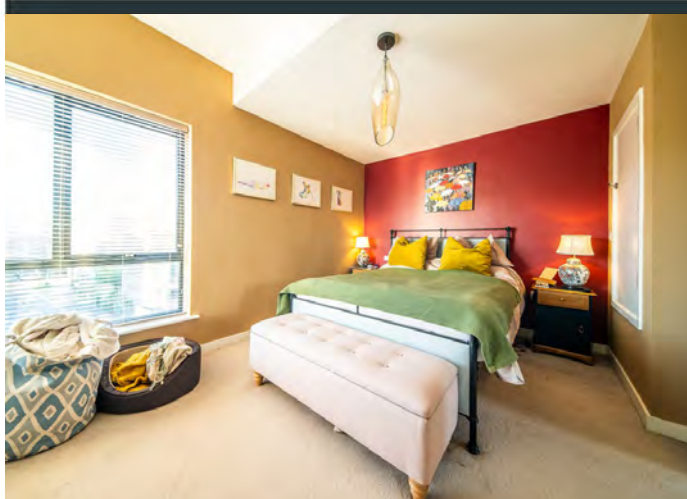


Video



Contact

83 Trent Lane, Nottingham, NG2 4DL



Interested in this home?

Contact the FHP Living Team on 0115 841 1155

23 Bridgford Road
West Bridgford
Nottingham
NG2 6AU

1 Weekday Cross
The Lace Market
Nottingham
NG1 2GB

Score	Energy rating	Current	Potential
92+	A		95 A
81-91	B	85 B	
69-80	C		
55-68	D		
39-54	E		
21-38	F		
1-20	G		

These sales particulars have been prepared by FHP Living on the instruction of the vendor. Services, equipment and fittings mentioned in these particulars have NOT been tested, and as such, no warranties can be given. Prospective purchasers are advised to make their own enquiries regarding such matters. These sales particulars are produced in good faith and are not intended to form part of a contract. Whilst FHP Living have taken care in obtaining internal measurements, they should only be regarded as approximate.

Purchaser information - Under the Protecting Against Money Laundering and the Proceeds of Crime Act 2002, FHP Living require any successful purchasers proceeding with a purchase to provide two forms of identification i.e. passport or photocard driving license and a recent utility bill. This evidence will be required prior to FHP Living instructing solicitors in the purchase or the sale of a property.