

# 11 Mayflower Close

West Bridgford  
Nottingham  
NG2 5LE

**Guide Price £250,000 - £275,000**



Click for further information:-



Location



Gallery



Video



Contact



0115 841 1155



- NO CHAIN! READY TO MOVE STRAIGHT INTO!
- Two-bedroom end-terraced house
- Modern kitchen and bathroom
- Front garden, rear garden and off road parking
- Lean-to garage space
- Sought-after West Bridgford location
- Close to all local amenities
- Viewing essential!
- Council Tax Band - B
- Tenure - Freehold



## 11 Mayflower Close, West Bridgford, Nottingham, NG2 5LE

### Key Features

NO CHAIN! READY TO MOVE STRAIGHT INTO!

A two-bedroom end-terraced home, nestled in the highly sought-after area of West Bridgford. Perfect for first-time buyers, downsizers, or investors, this home has been thoughtfully updated by the current owners, featuring a brand-new kitchen and bathroom.

As you enter, you're greeted by a welcoming hallway with stairs ascending to the first floor and a door opening into the living room. The living room is a cosy space, with a fireplace, a window to the front flooding the room with natural light, and handy storage under the stairs. A door leads you to the kitchen.

The newly refurbished kitchen features shaker-style wall and base units, integrated appliances, wood-effect laminate worktops, and spaces for a washer and fridge freezer. From here, step directly into the serene rear garden.

To the first floor, there are two well-appointed bedrooms offering comfortable living spaces, perfect for rest and relaxation. The family bathroom has been stylishly updated, featuring a bath with shower over, a vanity basin unit, and tiled flooring for a sleek, modern look.

Outside, the front garden is laid to lawn, providing a green welcome. The driveway offers off-street parking and leads to the lean-to garage, a versatile space for additional storage.

To the rear, step into your private outdoor garden, with a patio area ideal for alfresco dining, a well-maintained lawn, and an array of trees and shrubs creating a picturesque backdrop.

This home offers the perfect blend of modern convenience and classic charm, all in a prime location. Don't miss out on the opportunity to make this house your home.



0115 841 1155



Location



Gallery



Video

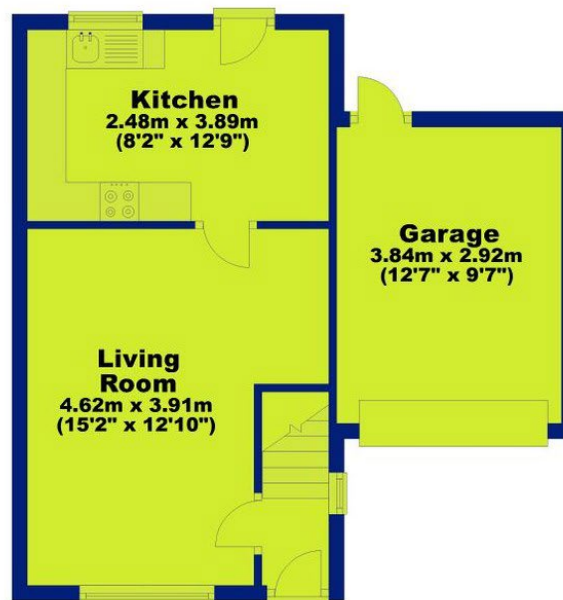


Contact

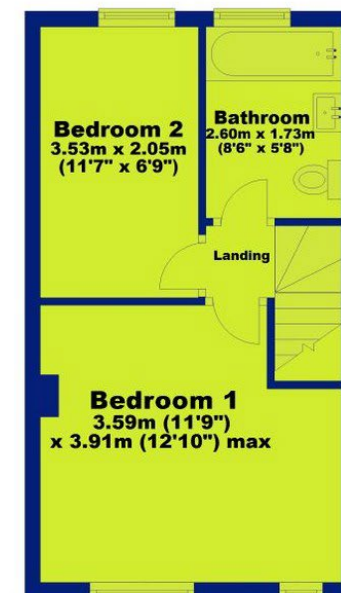
11 Mayflower Close, West Bridgford, Nottingham, NG2 5LE



**Ground Floor**  
Approx. 39.7 sq. metres (427.3 sq. feet)

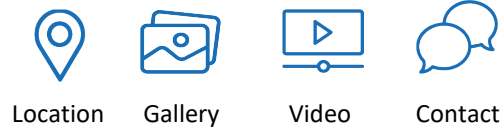


**First Floor**  
Approx. 28.3 sq. metres (304.9 sq. feet)



**Total area: approx. 68.0 sq. metres (732.2 sq. feet)**

0115 841 1155



11 Mayflower Close, West Bridgford, Nottingham, NG2 5LE



### *Interested in this home?*

Contact the FHP Living Team on 0115 841 1155

23 Bridgford Road  
West Bridgford  
Nottingham  
NG2 6AU

1 Weekday Cross  
The Lace Market  
Nottingham  
NG1 2GB

Score	Energy rating	Current	Potential
92+	A		
81-91	B		88 B
69-80	C	72 C	
55-68	D		
39-54	E		
21-38	F		
1-20	G		

These sales particulars have been prepared by FHP Living on the instruction of the vendor. Services, equipment and fittings mentioned in these particulars have NOT been tested, and as such, no warranties can be given. Prospective purchasers are advised to make their own enquiries regarding such matters. These sales particulars are produced in good faith and are not intended to form part of a contract. Whilst FHP Living have taken care in obtaining internal measurements, they should only be regarded as approximate.

Purchaser information - Under the Protecting Against Money Laundering and the Proceeds of Crime Act 2002, FHP Living require any successful purchasers proceeding with a purchase to provide two forms of identification i.e. passport or photocard driving license and a recent utility bill. This evidence will be required prior to FHP Living instructing solicitors in the purchase or the sale of a property.