

12, 2

Trent Bridge View

Nottingham
NG2 3EY

Guide Price £210,000



Click for further information:-



Location



Gallery



Video



Contact



0115 841 1155



- No upward chain and ready to move straight into!
- A short walk to Nottingham City Centre and West Bridgford
- Third floor, one-bedroom apartment
- Close to all local amenities and transport links
- Located on the River Trent
- Viewing essential
- Open plan kitchen diner
- Council Tax Band - C
- Views over the canal
- Tenure - Leasehold

0115 841 1155



Location



Gallery



Video



Contact

 fhp.living
fhpliving.co.uk

12, 2 Trent Bridge View, Nottingham, NG2 3EY

Key Features

NO UPWARD CHAIN, READY TO MOVE STRAIGHT INTO!

A stunning one bedroom apartment at the Trent Bridge Quays Development, located on the third floor. Ideal for first time buyers or investors.

The property is located just a short walk from Nottingham City Centre and West Bridgford where you will find the local shops, restaurants and coffee bars. It's also a fantastic spot for the transport links, as it is close to the train station and bus routes.

The apartment is accessed through the communal entrance of the block where there is a lift and stairs which will take you up to the apartment. As you enter, you have a spacious hallway with doors leading to a store cupboard, the bathroom, the large bedroom and open plan living/ kitchen dining area.

The open plan living/ kitchen area has floor to ceiling windows making it a bright and light entertaining space, with attractive waterside/ canal views from the living room. The kitchen is fully fitted with built-in appliances, wall and base units and a space for a dining area.

The bedroom has space for wardrobes, floor to ceiling windows with views over the Nottingham Canal and is carpeted throughout.

The modern bathroom is fully tiled with Porcelanosa tiles and has sanitaryware by Duravit and Hansgrohe.

This is one you will not want to miss so please contact us today to book in for a viewing!



0115 841 1155



Location



Gallery



Video



Contact

12, 2 Trent Bridge View, Nottingham, NG2 3EY



Approx. 53.0 sq. metres (570.4 sq. feet)

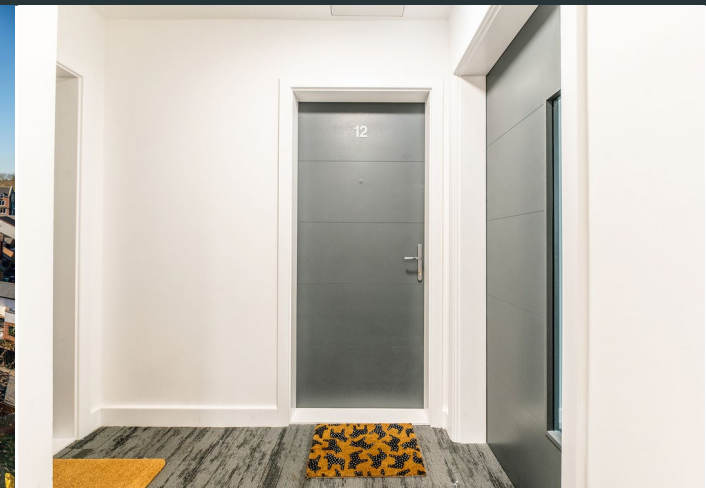


Total area: approx. 53.0 sq. metres (570.4 sq. feet)

0115 841 1155

- Location
- Gallery
- Video
- Contact

12, 2 Trent Bridge View, Nottingham, NG2 3EY



Interested in this home?

Contact the FHP Living Team on 0115 841 1155

23 Bridgford Road
West Bridgford
Nottingham
NG2 6AU

1 Weekday Cross
The Lace Market
Nottingham
NG1 2GB

Score	Energy rating	Current	Potential
92+	A		
81-91	B	82 B	82 B
69-80	C		
55-68	D		
39-54	E		
21-38	F		
1-20	G		

These sales particulars have been prepared by FHP Living on the instruction of the vendor. Services, equipment and fittings mentioned in these particulars have NOT been tested, and as such, no warranties can be given. Prospective purchasers are advised to make their own enquiries regarding such matters. These sales particulars are produced in good faith and are not intended to form part of a contract. Whilst FHP Living have taken care in obtaining internal measurements, they should only be regarded as approximate.

Purchaser information - Under the Protecting Against Money Laundering and the Proceeds of Crime Act 2002, FHP Living require any successful purchasers proceeding with a purchase to provide two forms of identification i.e. passport or photocard driving license and a recent utility bill. This evidence will be required prior to FHP Living instructing solicitors in the purchase or the sale of a property.