

Nottingham Waterfront... a great location for living!



Asking Price Of £340,000

C7 The Yacht Club, Trent Lane, Nottingham Waterfront, Nottingham,

- First floor luxury apartment • Stunning river views • Two bedrooms • Large open plan living • Large balcony
- Lift • Concierge • Dedicated parking space • On site residents gym



C7 The Yacht Club, Trent Lane, Nottingham Waterfront, Nottingham, NG2 4RN

An oasis of calm, these bright and well-proportioned modern and stylish apartments, features two bedrooms (master with en-suite), a guest bathroom, and an impressive open plan reception/kitchen. Views from the apartments are a particularly stunning, especially from the upper floors. Residents will also have the use of a communal gym and concierge service.

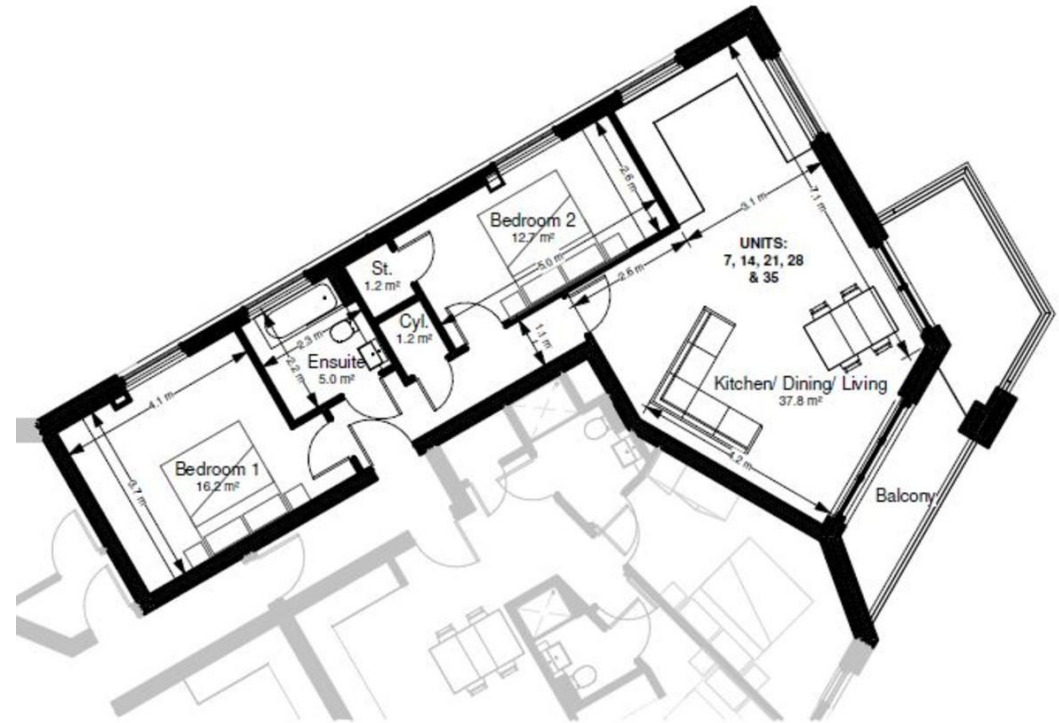
These apartments also benefit from being in the heart of a thriving location, with exceptional features, fitted kitchens, stylish, modern bathrooms, master bedrooms with en-suite, car parking, gymnasium, and outdoor space, which altogether create an inspiring place to live.

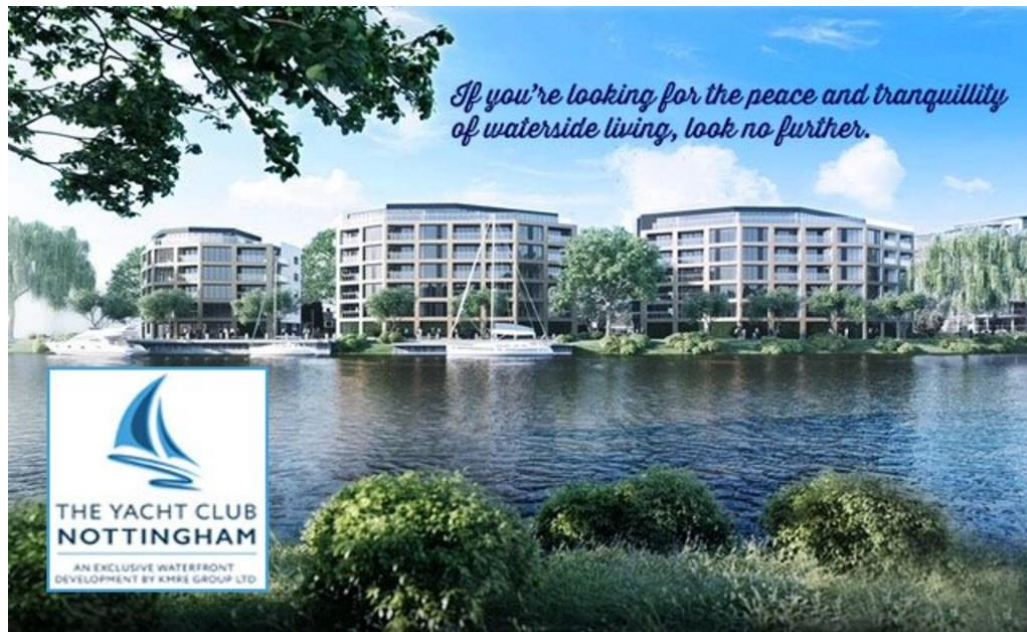
Locally, you can discover the tranquillity of nearby Colwick Country Park, a beautiful area of woodland, perfect for outdoor activities, take afternoon tea at nearby Colwick Hall.

Within easy reach of West Bridgford amenities, and for Sports fans there's international and county cricket at nearby Trent Bridge, watch rugby at The Bay, or spend a Saturday afternoon cheering two of the country's most renown football clubs, all are just a short walk along the riverside.

Interested? Call: 0115 841 1155

www.fhpliving.co.uk





Interested? Call 0115 841 1155

or click www.fhpliving.co.uk

23 Bridgford Road | West Bridgford | Nottingham | NG2 6AU

1 Weekday Cross | The Lace Market | Nottingham | NG1 2GB