



45 Repton Road, Bristol, BS4 3LS

£365,000

Perfectly situated on ever popular Repton Road in Brislington, this well proportioned terraced house offers a perfect blend of comfort and convenience. With two good sized reception rooms, and a modern fitted kitchen, this property provides ample space for both relaxation and entertaining. Upstairs there's two great sized double bedrooms and a spacious bathroom with bath and separate shower cubicle.

Its location near Sandy Park Road means easy access to plenty of local amenities, including independent shops, cafes, and green spaces including Arnos Park and Nightingale Valley, making it a wonderful place to call home.

For those who commute, the property is conveniently situated near key commuter routes and cycle paths, allowing for straightforward travel to the city centre and beyond. Whether you are a first-time buyer or looking to downsize, this terraced house on Repton Road is a fantastic opportunity that should not be missed.

Entrance Hallway



Landing



Sitting Room

13'8 max x 12'4 (4.17m max x 3.76m)



Dining Room

17'8 x 14'4 (5.38m x 4.37m)

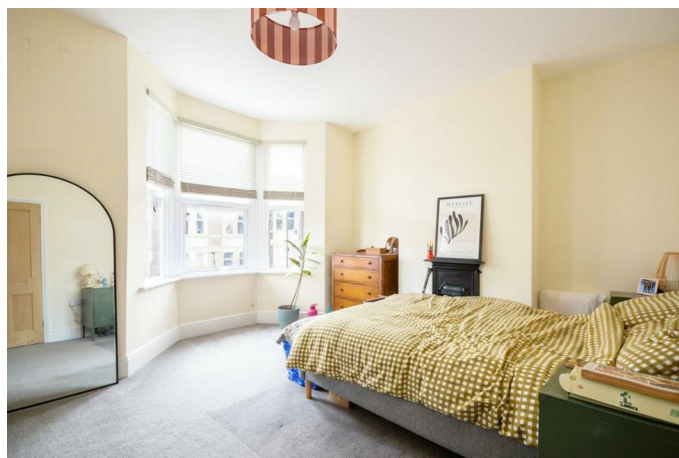


Kitchen

9'5 x 8'10 (2.87m x 2.69m)

Master Bedroom

14'9 x 14'4 (4.50m x 4.37m)



Bedroom Two

10'4 x 8'7 (3.15m x 2.62m)



Bathroom

9'6 x 8'10 (2.90m x 2.69m)



Rear Garden



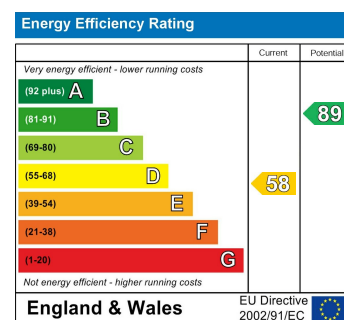
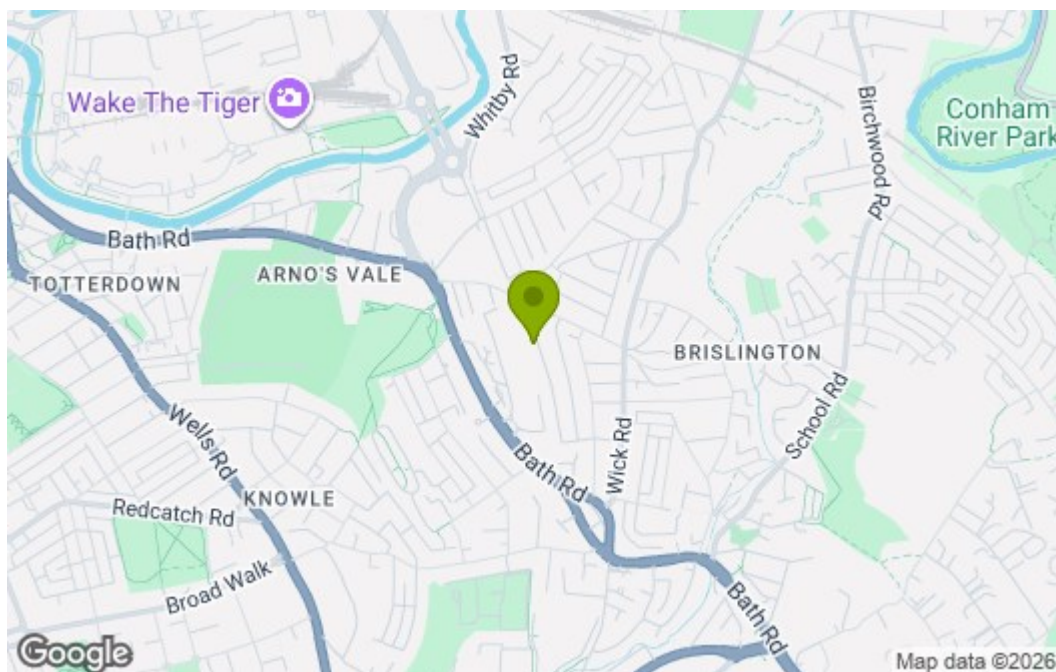
General

The land in this title is subject to a perpetual yearly rentcharge of £2.17 created by a Conveyance dated 5 December 1906

Floor Plan



Area Map



These particulars, whilst believed to be accurate are set out as a general outline only for guidance and do not constitute any part of an offer or contract. Intending purchasers should not rely on them as statements of representation of fact, but must satisfy themselves by inspection or otherwise as to their accuracy. No person in this firm's employment has the authority to make or give any representation or warranty in respect of the property.