

4 Burfoote Gardens, Bristol, BS14 8TE

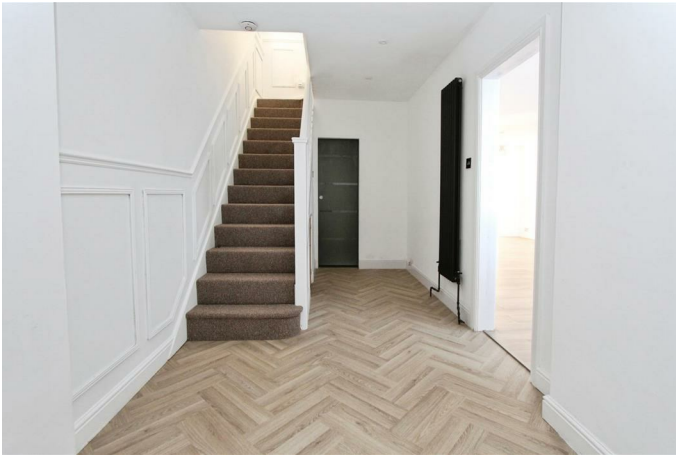
£420,000

This immaculate semi-detached property is a stunning find, perfect for those seeking a stylish and modern home. With three double bedrooms, two bathrooms, and an open-plan kitchen, it offers spacious and comfortable living for a growing family.

The property boasts a beautiful kitchen with bifold doors that open up to the low maintenance south-facing rear garden, allowing for seamless indoor-outdoor living and providing plenty of natural light throughout. The recently refurbished open-plan kitchen is a dream for those who love to cook and entertain, with its sleek design and modern appliances.

The master bedroom, as well as the two additional double bedrooms, provide ample space for relaxation and privacy. The first bathroom features a luxurious free-standing bath, perfect for unwinding after a long day. There is also a handy ground floor WC with walk in shower.

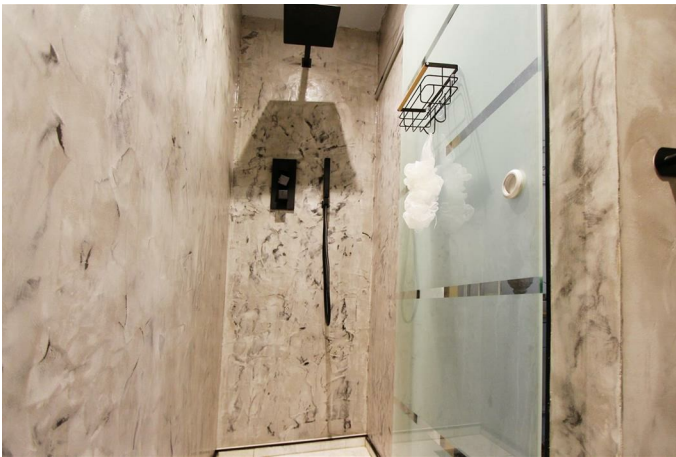
Entrance Hall



First Floor Landing



Ground Floor Shower Room



Bedroom One



Sitting Room



Bedroom Two



Open Plan Kitchen / Diner / Family Room



Bedroom Three



Salon / Home Office



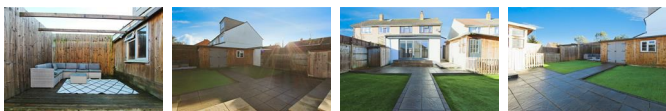
Bathroom



Utility Room



Outside



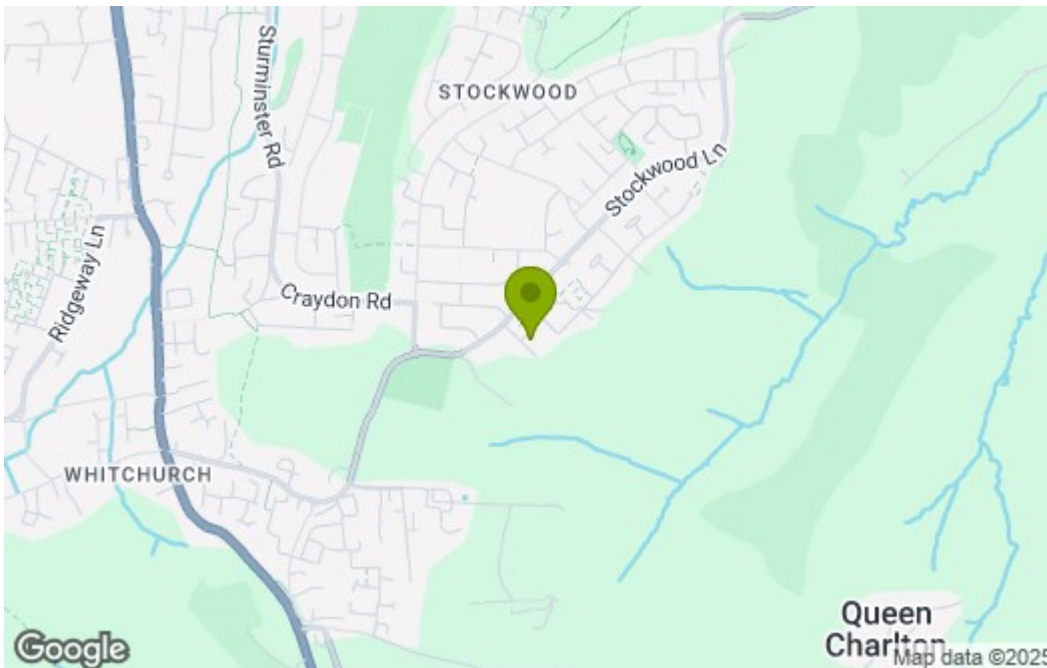
Floor Plan



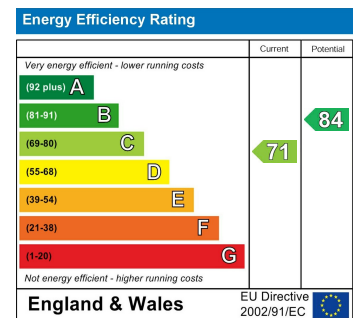
Total floor area 145.4 sq.m. (1,565 sq.ft.) approx

This plan is for illustration purposes only and may not be representative of the property. Plan not to scale. Powered by PropertyBox

Area Map



Energy Efficiency Graph



These particulars, whilst believed to be accurate are set out as a general outline only for guidance and do not constitute any part of an offer or contract. Intending purchasers should not rely on them as statements of representation of fact, but must satisfy themselves by inspection or otherwise as to their accuracy. No person in this firm's employment has the authority to make or give any representation or warranty in respect of the property.