



4 Greenacre Road, Bristol, BS14 0HL

£330,000

This semi-detached bungalow is offered for sale and is located in a cul de sac on Greenacre Road in Bristol (BS14), placing it in a sought-after residential area close to green spaces and the scenic Dundry Slopes. The property comprises two double bedrooms, a spacious sitting./ dining room a separate kitchen, and shower room, providing practical accommodation across a single floor. An EPC rating of C and council tax band C further enhance its appeal.

A south-easterly facing rear garden provides ample outdoor space, benefitting from good sunlight throughout the day. The property also features a driveway and garage, offering off-street parking options. Gas central heating and double glazing are also included.

Greenacre Road is ideally suited for those who appreciate proximity to green spaces. The nearby Dundry Slopes offer wide-ranging views and extensive walking opportunities for outdoor enthusiasts. The local area is served by a selection of schools, with amenities available in the areas of Whitchurch and Hengrove, where you will find local shops, cafés, and other services.

Entrance Hall

Sitting / Dining Room

16'6" x 11'9" (5.05 x 3.60)



Bedroom Two

10'2" x 10'2" (3.11 x 3.11)

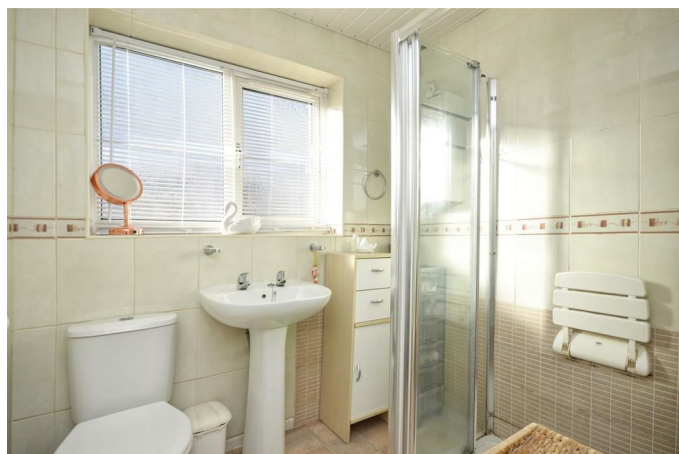


Kitchen

10'1" x 7'9" (3.09 x 2.38)



Shower Room



Bedroom One

14'2" x 11'9" (4.33 x 3.60)



Outside

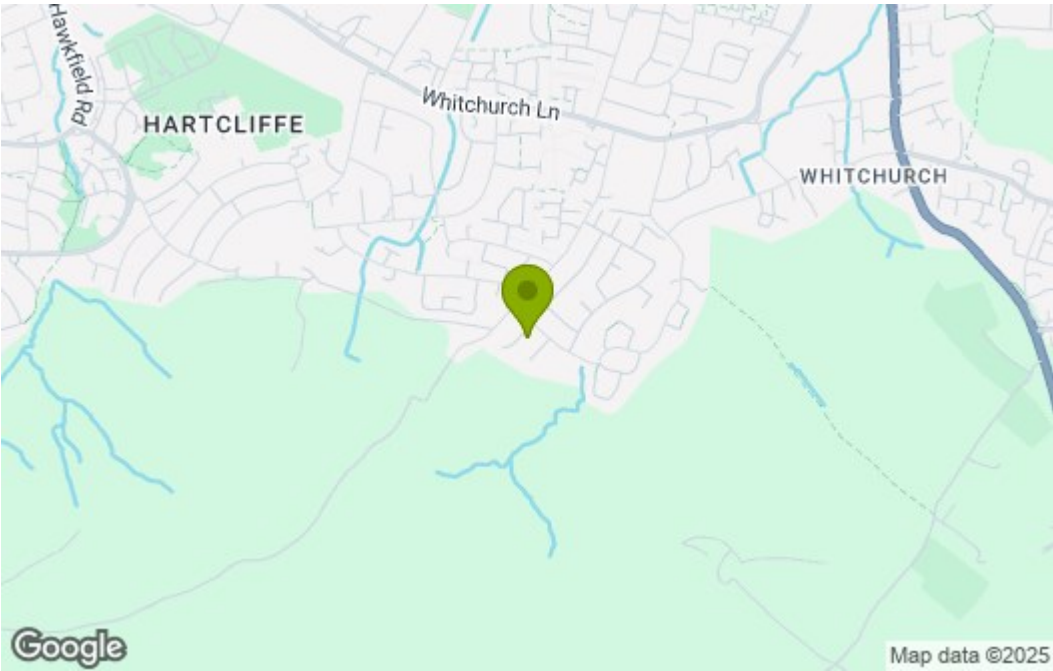


Garage

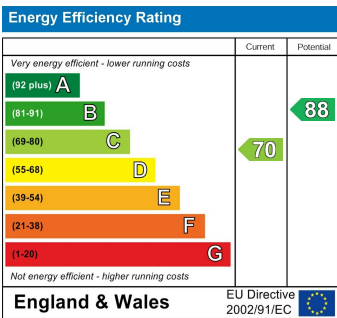
Floor Plan



Area Map



Energy Efficiency Graph



These particulars, whilst believed to be accurate are set out as a general outline only for guidance and do not constitute any part of an offer or contract. Intending purchasers should not rely on them as statements of representation of fact, but must satisfy themselves by inspection or otherwise as to their accuracy. No person in this firms employment has the authority to make or give any representation or warranty in respect of the property.