



119 Newland Road, Bristol, BS13 9DS

£245,000

Presenting a charming end of terrace house, listed for sale. This property is in a neutrally decorated condition throughout, allowing potential buyers to easily envision their own style within the home. The property is spread across two floors and features a collection of cosy and inviting rooms.

The ground floor comprises of a separate reception room, a perfect space for relaxing or entertaining. The room is complemented by a cute wood burning stove, adding a unique feature to the property. Also on this floor, you'll discover a kitchen equipped with built-in pantry also housing the combi boiler and providing direct access to the garden, ideal for those who enjoy al fresco dining or gardening.

On the first floor, there are two double bedrooms. Each room provides ample space for furniture and storage, promoting comfortable living. From the first floor, residents will enjoy a view to the suspension bridge, a charming and unique feature of this property's location.

Lean To Entrance

Hallway

Sitting Room

15'8" x 12'0" (4.79 x 3.66)



Kitchen

11'0" x 8'9" (3.36 x 2.68)



First Floor Landing

Bedroom One

15'8" x 10'7" (4.79 x 3.24)



Bedroom Two

11'8" x 10'11" (3.57 x 3.34)



Bathroom

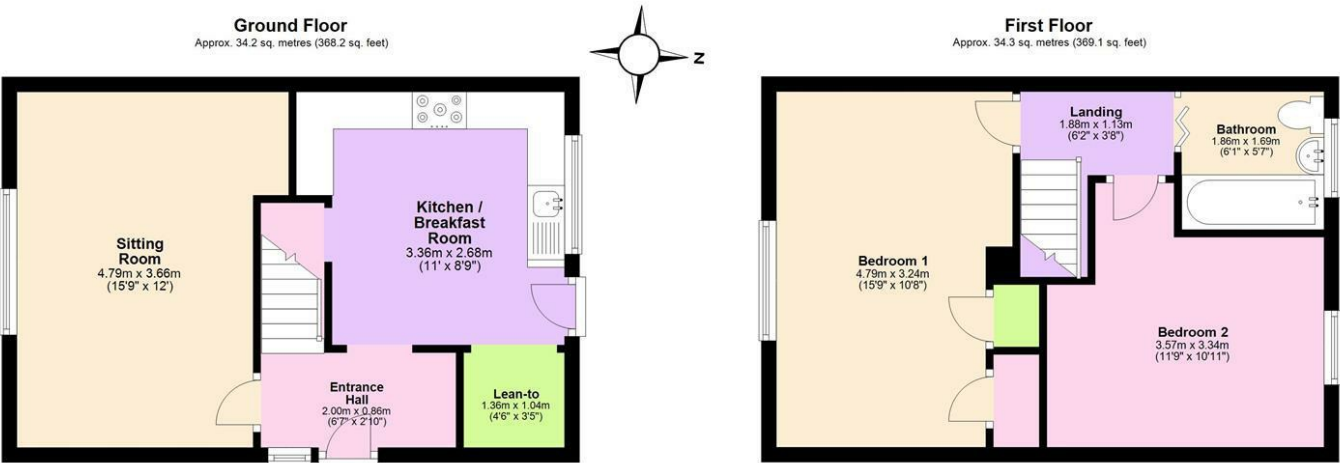
6'1" x 5'6" (1.86 x 1.69)



Outside



Floor Plan

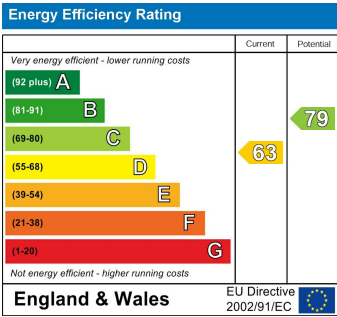


Total area: approx. 68.5 sq. metres (737.3 sq. feet)

Area Map



Energy Efficiency Graph



These particulars, whilst believed to be accurate are set out as a general outline only for guidance and do not constitute any part of an offer or contract. Intending purchasers should not rely on them as statements of representation of fact, but must satisfy themselves by inspection or otherwise as to their accuracy. No person in this firms employment has the authority to make or give any representation or warranty in respect of the property.