



## Oaklea House Sleep Lane, Bristol, BS14 0QN

**£825,000**

We are delighted to present this immaculate bungalow, located in a highly sought after location surrounded by green spaces. This unique home is ideal for families seeking comfortable living environment with versatile accommodation all on one level.

The property features a generous layout with large, well-proportioned rooms that are bathed in natural light. The heart of this home is the open-plan kitchen, which boasts a kitchen island / breakfast bar, a utility room, and a dedicated dining space, perfect for family meals or casual entertaining.

The property comprises three double bedrooms, with the generous master bedroom benefitting from an en-suite for total privacy and convenience. The second bedroom has a distinctive fireplace adding a touch of character, while the third bedroom is also a double. The luxury bathroom is fitted with a walk in rain shower, offering a spa-like experience right at home.



### Entrance Porch

5'1" x 4'9" (1.56 x 1.47)



### Utility

12'4" x 5'1" (3.76 x 1.55)



### Sitting Room

22'2" x 16'8" (6.77 x 5.09)



### Inner Hallway

20'3" x 4'7" (6.19 x 1.40)



### Kitchen / Breakfast Room

14'4" x 10'5" (4.37 x 3.18)



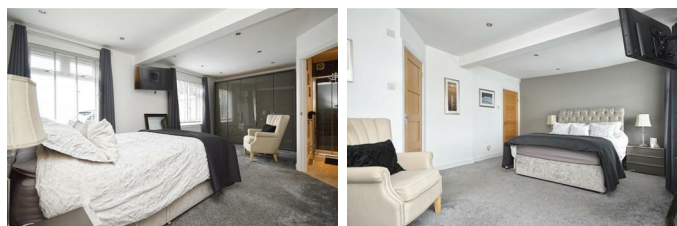
### Dining Area

18'3" x 12'6" (5.57 x 3.82)



### Bedroom One

19'11" x 12'9" (6.09 x 3.89)



### En-Suite

8'8" x 4'7" (2.66 x 1.42)



### Family Bathroom

12'4" x 7'3" (3.76 x 2.21)



### Bedroom Two

16'0" x 14'0" (4.88 x 4.27)



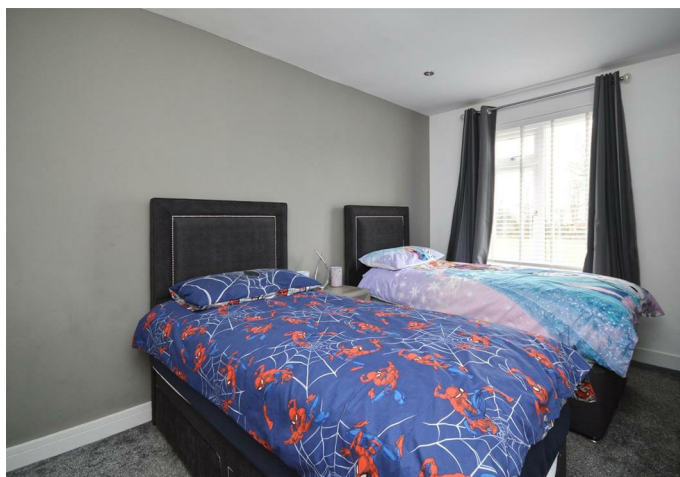
### Outside

#### Front Courtyard



### Bedroom Three

12'10" x 9'11" (3.93 x 3.03)



### Rear Garden



### Double Garage

20'0" x 18'8" (6.11 x 5.69)

### Front Garden





Entrance Gates



Ariel View

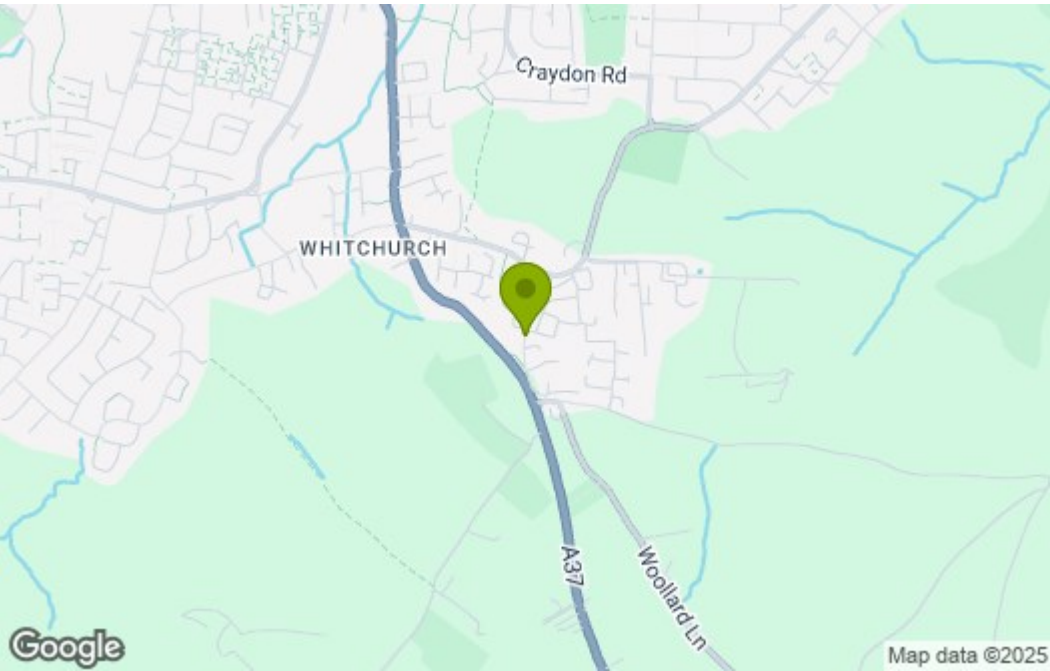


Ariel View Showing Surroundings

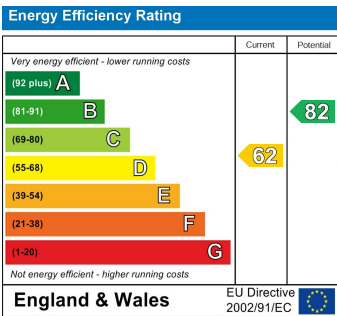
Floor Plan



Area Map



Energy Efficiency Graph



These particulars, whilst believed to be accurate are set out as a general outline only for guidance and do not constitute any part of an offer or contract. Intending purchasers should not rely on them as statements of representation of fact, but must satisfy themselves by inspection or otherwise as to their accuracy. No person in this firms employment has the authority to make or give any representation or warranty in respect of the property.