



6 Watsons Road, Bristol, BS30 9DW

Offers Over £500,000

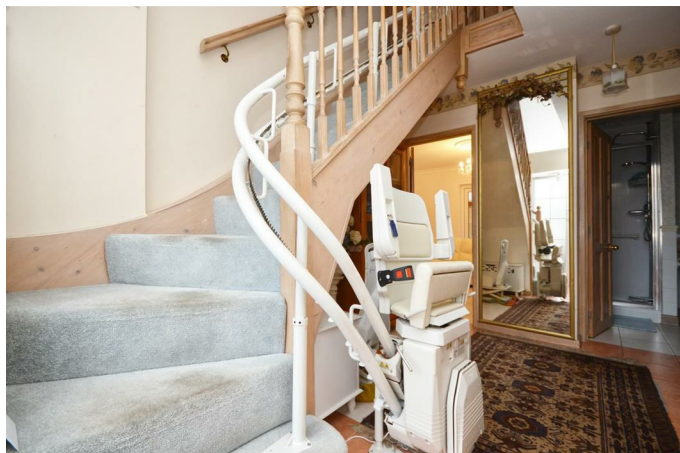
Nestled in the charming area of Longwell Green, Bristol, this delightful three-bedroom detached house offers a perfect blend of comfort and convenience. The property boasts gas-fired central heating and double glazing, ensuring a warm and inviting atmosphere throughout the year. A spacious driveway leads to a generously sized garage, providing ample space for vehicles and storage.

The well-manicured rear garden is a true highlight, offering a private outdoor sanctuary ideal for relaxation or entertaining guests. The enclosed space is perfect for families, providing a safe environment for children to play and explore.

Longwell Green is renowned for its picturesque surroundings, combining rural charm with urban convenience. The strategic location allows for easy access to the A4174 Bristol ring road, which connects seamlessly to the M32, M4, and M5 motorways, making commuting to nearby cities and towns a breeze. For those who enjoy the outdoors, the surrounding green spaces and parks are perfect for leisurely walks and cycling, promoting an active lifestyle.

Entrance via uPVC double glazed obscured door into

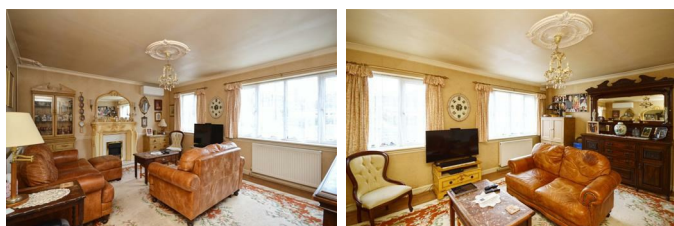
Hallway



Tiled flooring, stairs rising to first floor landing, understairs storage space, single radiator, storage cupboard with shelving, doors to

Sitting Room

16'6" x 13'8" (5.05 x 4.17)



uPVC double glazed window to front aspect, 2 double radiators, coal effect electric fire, storage cupboard with fitted shelving.

Living Room

16'10" x 10'9" (5.14 x 3.29)



uPVC double glazed patio doors opening to conservatory, tiled flooring, double radiator, door to

Bedroom Three

11'5" x 10'2" (3.49 x 3.11)



uPVC double glazed window to front aspect, double radiator, tiled flooring.

Bathroom

8'10" x 6'6" (2.70 x 2.00)



Obscured uPVC double glazed window to rear aspect, shower cubicle with shower attachment over, paneled bath with mixer taps and shower attachment over, close coupled w/c, wash hand basin with mixer taps and storage beneath, towel rail, extractor, tiled flooring part tiled.

Kitchen

15'2" x 12'4" (4.63 x 3.76)



uPVC double glazed window to side aspect, uPVC double glazed window to rear aspect, a range of wall and floor units with worksurface over, sink drainer unit with mixer taps over, space and plumbing for washing machine, space for tumble drier, space and plumbing for dishwasher, space for American style fridge freezer, integrated double oven and gas hob with extractor over, 2 single radiators, tiled flooring, spotlights, door to

Conservatory

24'11" x 9'3" (7.61 x 2.84)



uPVC double glazed floor to ceiling windows to side and rear aspects, uPVC double glazed patio doors opening to rear garden, polycarbonate roof, wood effect flooring.

First Floor Landing

Doors to

Master Bedroom

19'9" x 10'0" (6.03 x 3.07)



Three double glazed Velux windows to rear aspect, double radiator, air conditioning unit, eaves storage space, opening to wardrobe area with uPVC double glazed window to side aspect, double radiator.

Bedroom Two

11'10" x 9'10" (3.63 x 3.00)



uPVC double glazed window to side aspect, double glazed Velux window to rear aspect, double radiator, eaves storage space, air conditioning unit.

W/C



Double glazed Velux window to rear aspect, wash hand basin with taps over and storage beneath, close coupled w/c, electric radiator.

Outside



The front of the property has a pathway leading to the front door, the remainder is laid mainly to gravel for ease of maintenance, a driveway provides off street parking and access to the garage. The rear garden has a patio area immediately adjacent to the property ideal for garden furniture, the remainder is laid mainly to lawn with a further decking area to the rear ideal for additional garden furniture. A summerhouse and garden shed are also included in the sale. The rear garden is enclosed by wooden fencing. A side gate provides pedestrian access to the rear garden.

L Shape Garage/Workshop

Double doors, pedestrian door to rear aspect, power and light connected.

Directions

Sat Nav BS30 9DW

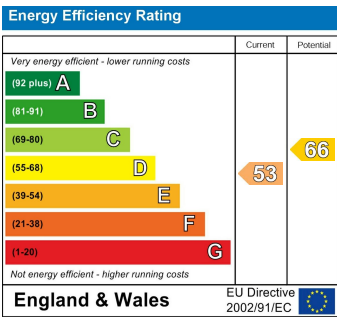
Floor Plan



Area Map



Energy Efficiency Graph



These particulars, whilst believed to be accurate are set out as a general outline only for guidance and do not constitute any part of an offer or contract. Intending purchasers should not rely on them as statements of representation of fact, but must satisfy themselves by inspection or otherwise as to their accuracy. No person in this firms employment has the authority to make or give any representation or warranty in respect of the property.