

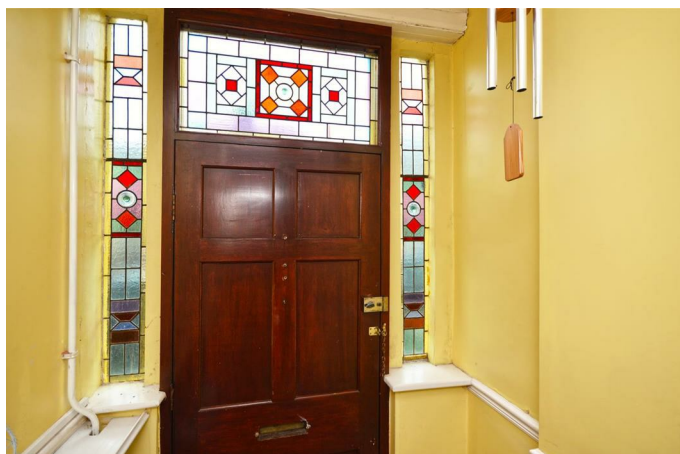


151 Winchester Road, Bristol, BS4 3NJ

£475,000

Situated in the heart of Brislington, and offered for sale with no onward chain, this period terrace retains all those important features, high ceilings, generously sized rooms and plenty of character. The accommodation briefly comprises a large entrance vestibule opening to a central hallway with stunning original tiled flooring and stained glass, a bayed lounge situated to the front of the property, whilst to the rear is a large, full width dining/family room with the fitted kitchen off. A turned staircase leads to the first floor with a large master bedroom, two further good sized double bedrooms and a shower room. Outside there's a low maintenance enclosed garden with shed. Perfectly located for Holmead Juniors and with all the independent shops and cafes on Sandy Park Road at the end of the street, this substantial home has a lot to offer those seeking space, character and a home in the heart of the community, which they can update and improve further over time.

Entrance Vestibule

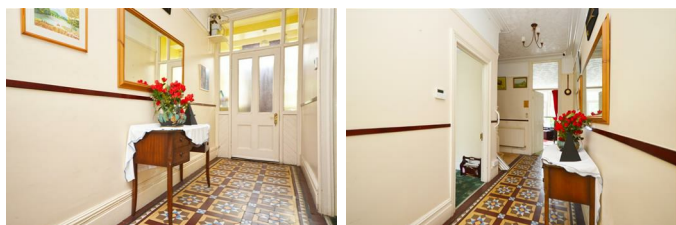


Living/Dining Room

18'9 x 12'5 (5.72m x 3.78m)



Hallway



Kitchen

15'3 x 7'1 (4.65m x 2.16m)



W.C

Sitting Room

15'8" max x 13'5" (4.78m max x 4.11m)



Landing



Master Bedroom

15'8 x 13'7 (4.78m x 4.14m)

Bedroom Two

12'5 x 9'2 (3.78m x 2.79m)



Rear Garden



General

Please note, the land in this title is subject to a perpetual yearly rentcharge of £3.80

Bedroom Three

12'5 x 9'3 (3.78m x 2.82m)



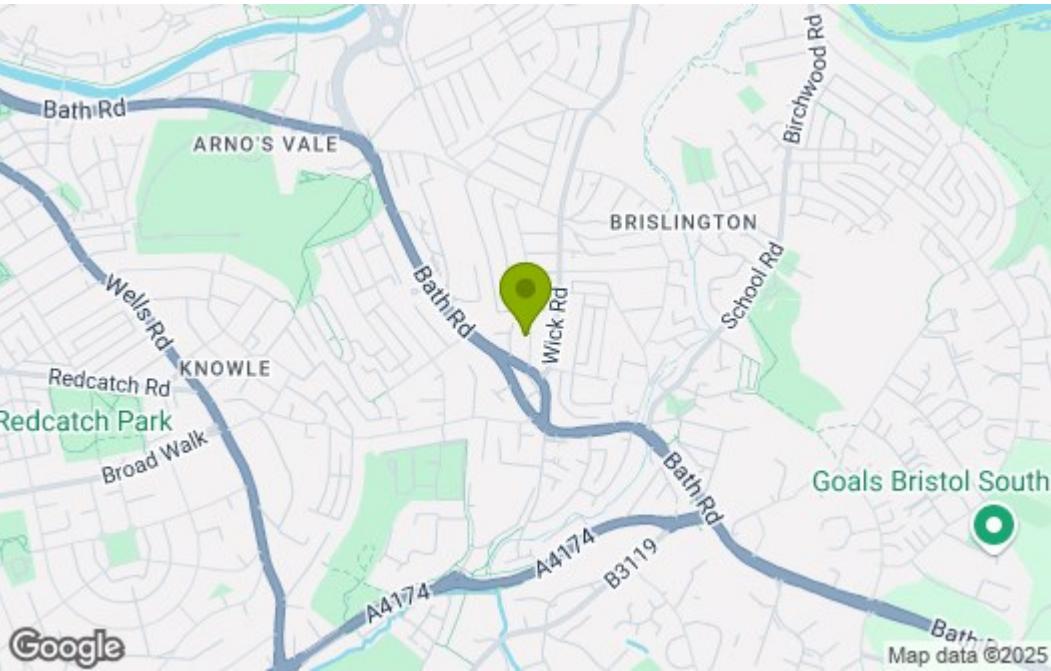
Shower Room



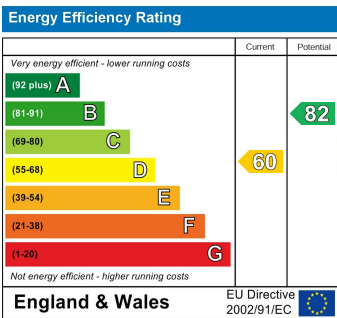
Floor Plan



Area Map



Energy Efficiency Graph



These particulars, whilst believed to be accurate are set out as a general outline only for guidance and do not constitute any part of an offer or contract. Intending purchasers should not rely on them as statements of representation of fact, but must satisfy themselves by inspection or otherwise as to their accuracy. No person in this firms employment has the authority to make or give any representation or warranty in respect of the property.