

9a Wharneckliffe Close, Bristol, BS14 9NE

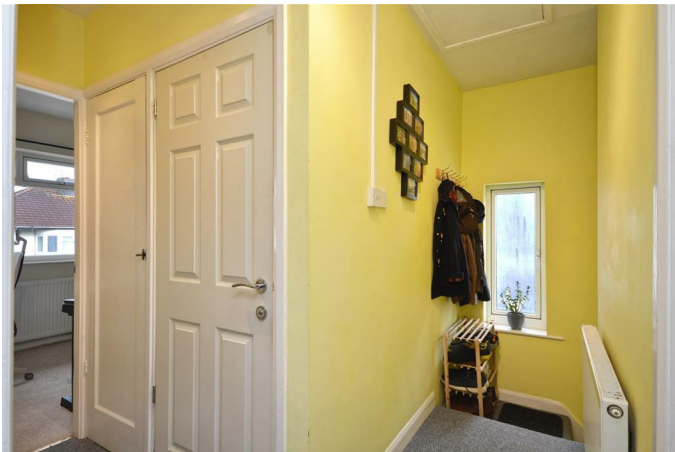
£205,000

Presenting this delightful flat, currently listed for sale and neatly presented throughout. This property comes with a notable feature of a garden, which is a rare find. This feature makes it an ideal home for couples who appreciate the tranquillity of a private green space.

The property offers a well-organised layout with two bedrooms. The master bedroom is a spacious double, while the second room is a small double, both tastefully finished to create a warm and inviting ambience. The property also benefits a bathroom with a shower over the bath.

The living space comprises a single reception room, a generous area that allows for comfortable living and entertaining. The kitchen is at the rear overlooking the garden. The added bonus of a large loft space great for extra storage.

Entrance Hall



Bedroom One

13'2" x 10'6" (4.03 x 3.21)



Sitting / Dining Room

16'1" x 10'7" (4.91 x 3.23)



Bedroom Two

10'0" x 7'1" (3.07 x 2.18)



Kitchen

10'2" x 10'1" (3.11 x 3.09)



Bathroom



Garden



General

There is a yearly ground rent of £15 which has never been claimed during the current sellers ownership.

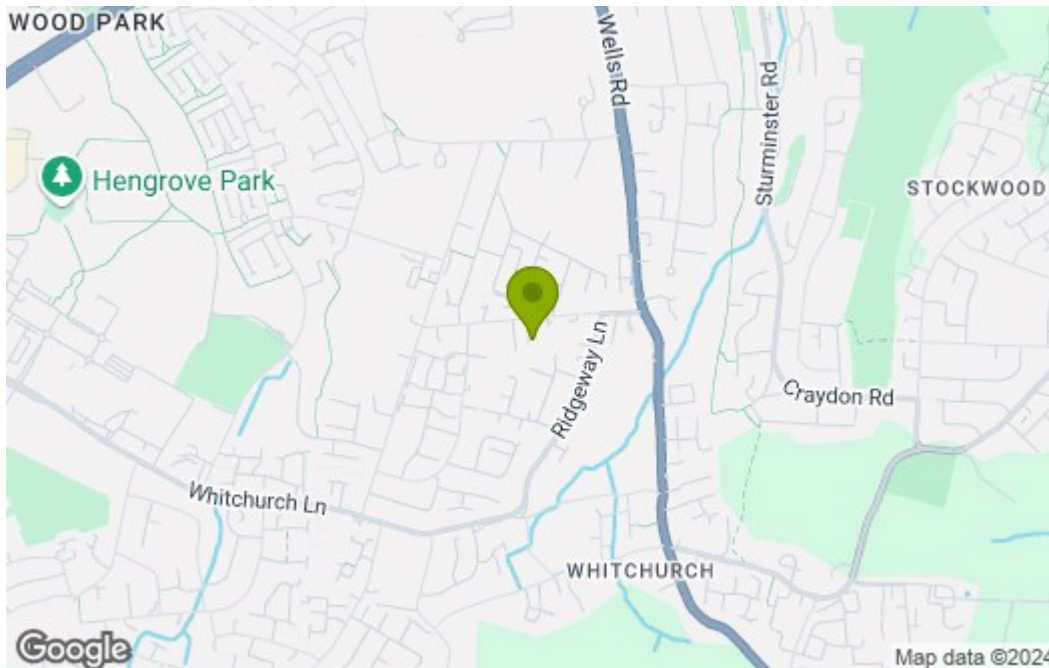
Floor Plan



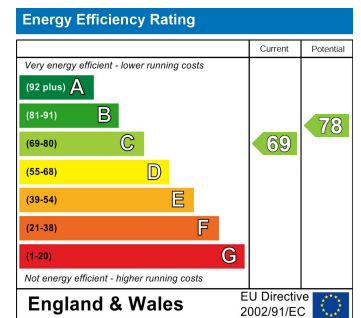
Total area: approx. 54.0 sq. metres (581.0 sq. feet)

9a Wharncliffe Close, Bristol

Area Map



Energy Efficiency Graph



These particulars, whilst believed to be accurate are set out as a general outline only for guidance and do not constitute any part of an offer or contract. Intending purchasers should not rely on them as statements of representation of fact, but must satisfy themselves by inspection or otherwise as to their accuracy. No person in this firm's employment has the authority to make or give any representation or warranty in respect of the property.