



259 Bishport Avenue, Bristol, BS13 0RQ

£325,000

This end-of-terrace property, now listed for sale, is in good condition and presents a fantastic opportunity for families, couples, sharers, and developers alike. The property boasts four double bedrooms, providing ample space for a comfortable living.

The first bedroom is a double with built-in wardrobes, offering a practical storage solution. The other three bedrooms are also spacious doubles, providing plenty of space.

The property features a functional kitchen complemented with a dining space, perfect for enjoying meals with family or hosting dinner parties. There's also a sitting / dining room, ideal for relaxing or entertaining guests.

The property is located in a convenient area with excellent public transport links, facilitating easy commutes and journeys. A unique feature of this property is its garage, providing secure parking or additional

Front Garden



Entrance Hall

18'11" x 5'11" (5.78 x 1.81)

Ground Floor WC

Sitting Room

18'5" x 12'3" (5.62 x 3.75)

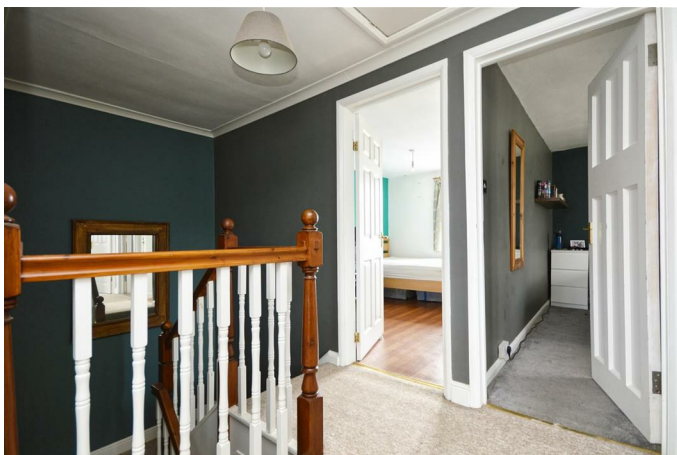


Kitchen / Dining Room

18'4" x 12'0" (5.60 x 3.66)



First Floor Landing



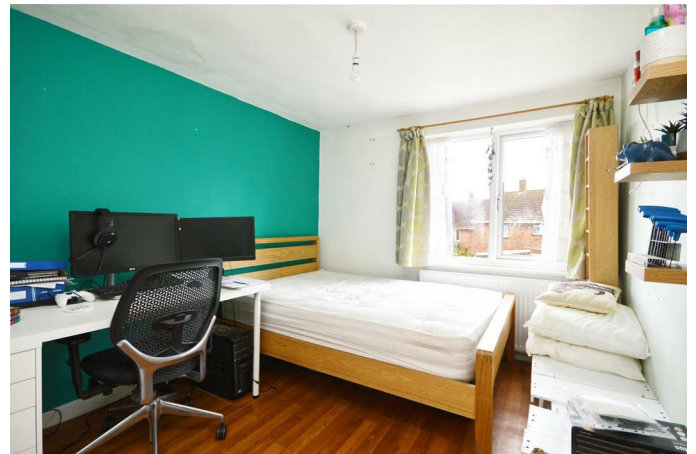
Bedroom One

12'4" x 11'2" (3.78 x 3.42)



Bedroom Two

12'0" x 8'11" (3.66 x 2.74)



Bedroom Three

12'0" x 8'11" (3.66 x 2.74)



Bedroom Four

9'10" x 6'10" (3.00 x 2.10)



Bathroom

8'4" x 5'4" (2.56 x 1.64)

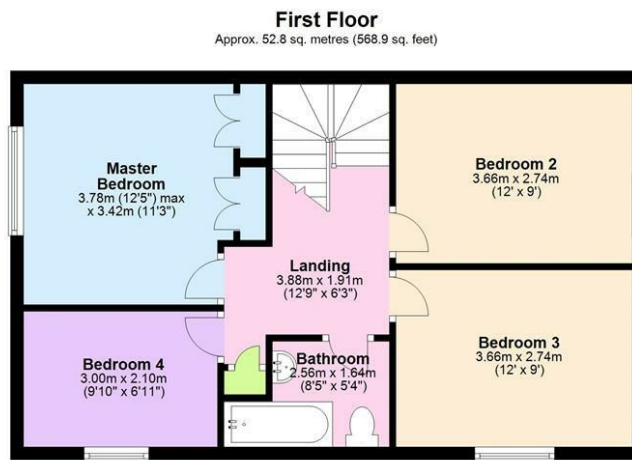
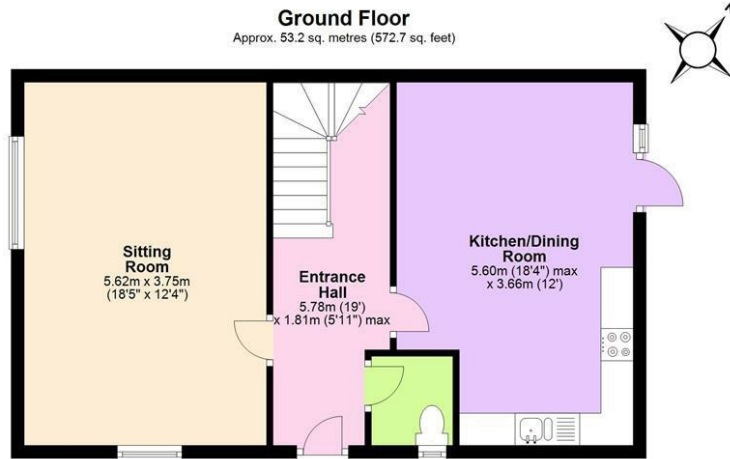


Outside



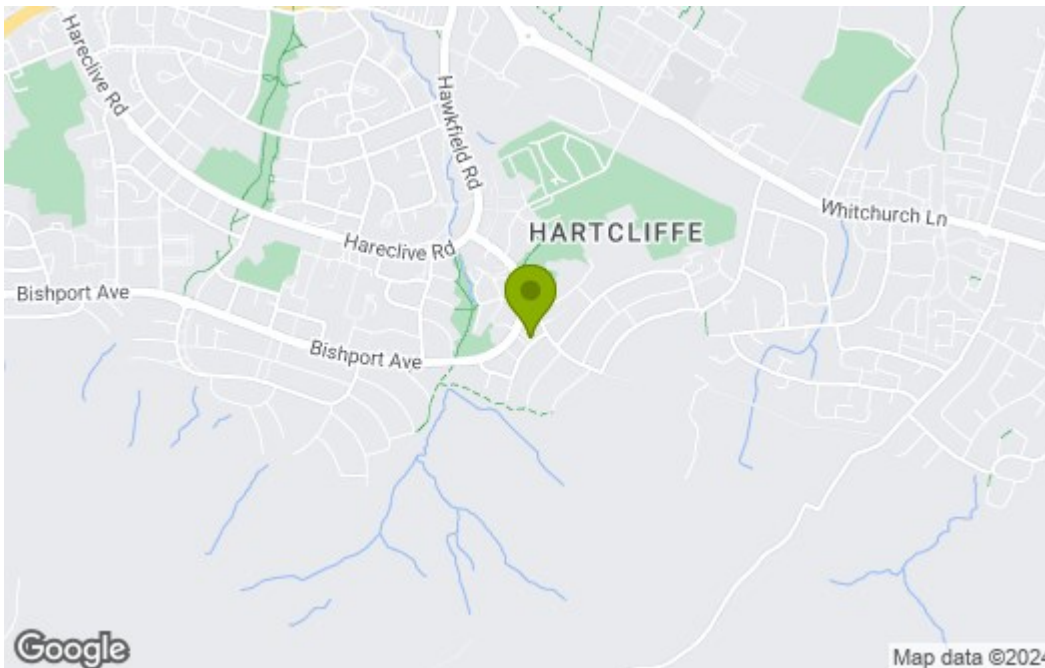
Garage & Driveway

Floor Plan

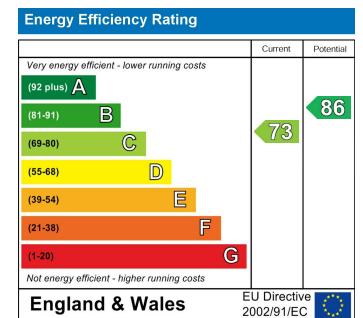


Total area: approx. 106.1 sq. metres (1141.6 sq. feet)

Area Map



Energy Efficiency Graph



These particulars, whilst believed to be accurate are set out as a general outline only for guidance and do not constitute any part of an offer or contract. Intending purchasers should not rely on them as statements of representation of fact, but must satisfy themselves by inspection or otherwise as to their accuracy. No person in this firm's employment has the authority to make or give any representation or warranty in respect of the property.