



53 Summer Hill, Bristol, BS4 3BG

£200,000

Centrally located and situated within a 15 minute walk to Bristol temple meads and many more local amenities, this is a great opportunity to acquire this lovely one bedroom Apartment in the fantastic community of Totterdown. Offered for sale with the benefit of no onward chain worries, the property boasts it's own private entrance, a large sitting room, a spacious kitchen dining room, a double bedroom with walk in storage cupboard and a shower room. The property also benefits from a communal gym, Bike and bin stores.

Sitting Room

17'2 max x 14'5 (5.23m max x 4.39m)



Kitchen/Breakfast Room

14'5 x 10'7 (4.39m x 3.23m)



Inner Hallway

Bedroom

18'2 x 10'1 (5.54m x 3.07m)



Shower Room

7'9 x 6'2 (2.36m x 1.88m)

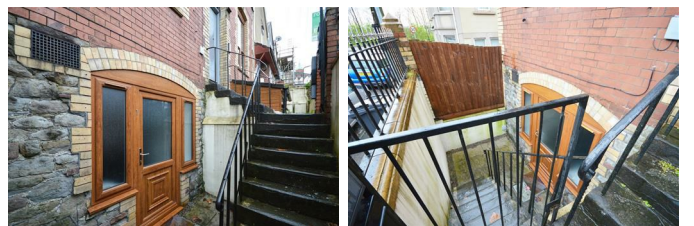


Communal Gym

18'7 x 18'1 (5.66m x 5.51m)



Private Entrance



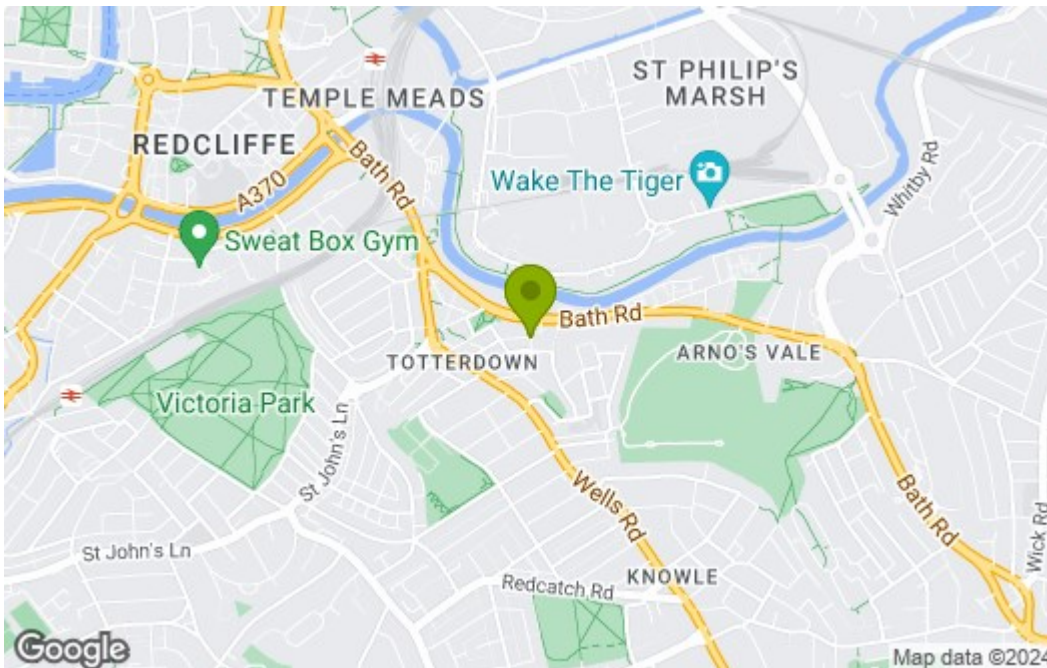
General

We are advised that the property will benefit from a new lease which is in the process of being established. This will be for a term of 125 years. The property is subject to a monthly management/maintenance charge of approx £90. This includes ground rent.

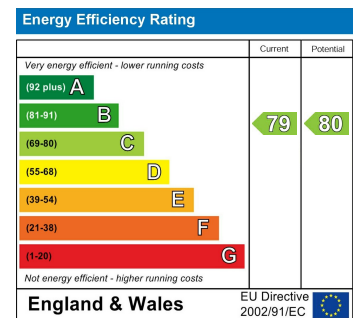
Floor Plan



Area Map



Energy Efficiency Graph



These particulars, whilst believed to be accurate are set out as a general outline only for guidance and do not constitute any part of an offer or contract. Intending purchasers should not rely on them as statements of representation of fact, but must satisfy themselves by inspection or otherwise as to their accuracy. No person in this firm's employment has the authority to make or give any representation or warranty in respect of the property.