

## 9 Bridge Close, Bristol, BS14 0TS

**£500,000**

We are delighted to present this immaculate detached family home, situated in a peaceful cul-de-sac. This property offers a perfect blend of modern living and style.

Upon entering the property, you will be greeted by a light and airy entrance hall with a downstairs w/c. The stunning refitted grey shaker style kitchen with beautiful contrast quartz worktops. The kitchen boasts high-quality fixtures including a built-in Neff oven and induction hob, as well as integrated dishwasher, washing machine and fridge freezer.

The spacious living accommodation on the ground floor comprises a reception room, perfect for relaxing and entertaining guests with bifold doors leading to the landscaped rear garden.

There are four well-proportioned bedrooms on the first floor. The master bedroom is a double room featuring an en-suite shower room and built-in wardrobes. The second bedroom is also a double room, offering ample storage space with convenient built-in wardrobes. Additionally, the third bedroom is another double room, perfect for growing families. The fourth bedroom is a single room, again benefiting from practical

### Entrance Hall



### Downstairs WC

6'2" x 3'3" (1.90 x 1.00)



### Sitting / Dining Room

21'1" x 13'11" (6.45 x 4.26)

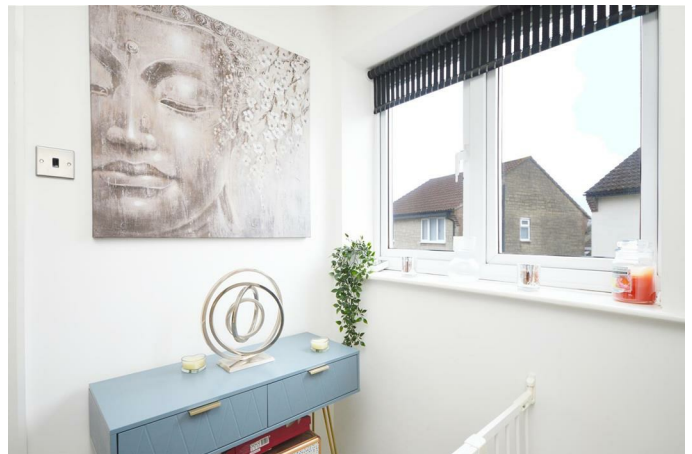


### Kitchen

14'4" x 10'0" (4.39 x 3.06)



### First Floor Landing



### Bedroom One

11'5" x 9'6" (3.49 x 2.90)



### En-Suite



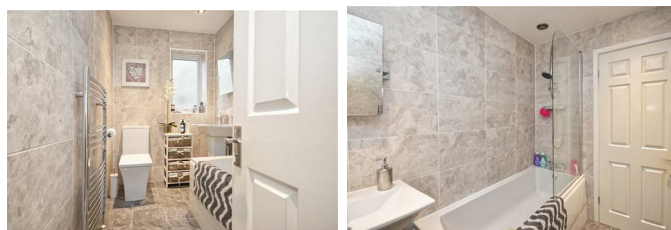
### Bedroom Two

11'8" x 9'1" (3.57 x 2.77)

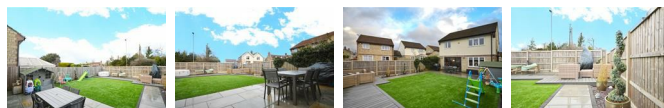


### Bathroom

8'5" x 5'2" (2.57 x 1.59)



### Outside



### Bedroom Three

9'6" x 6'5" (2.91 x 1.98)



### Double Garage

16'4" x 15'9" (5.00 x 4.81)

### Bedroom Four

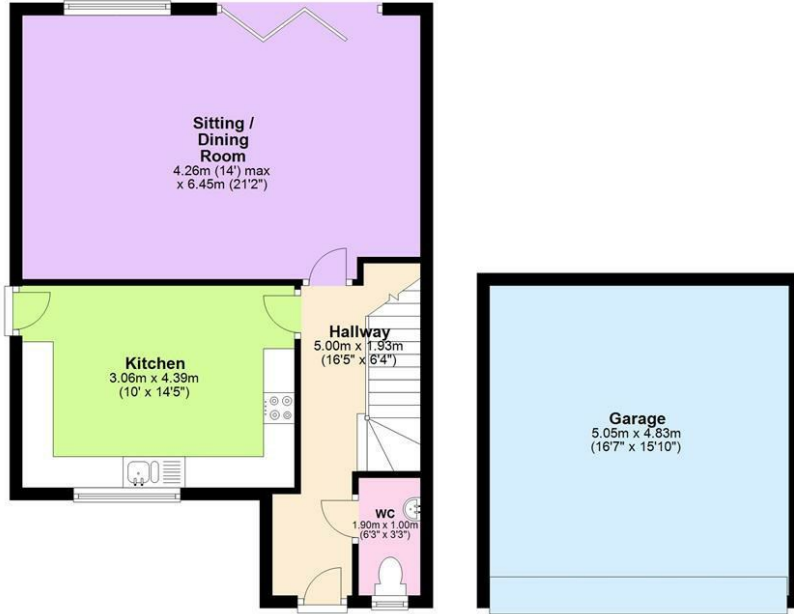
8'10" x 5'11" (2.70 x 1.81)



# Floor Plan

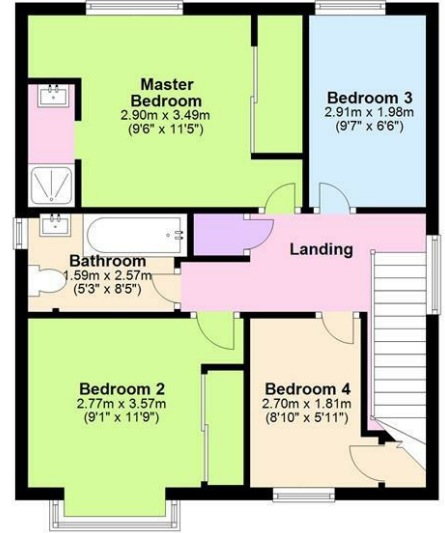
## Ground Floor

Approx. 76.6 sq. metres (824.9 sq. feet)



## First Floor

Approx. 49.7 sq. metres (534.7 sq. feet)

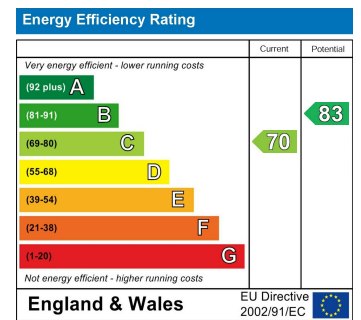


Total area: approx. 126.3 sq. metres (1359.6 sq. feet)

# Area Map



# Energy Efficiency Graph



These particulars, whilst believed to be accurate are set out as a general outline only for guidance and do not constitute any part of an offer or contract. Intending purchasers should not rely on them as statements of representation of fact, but must satisfy themselves by inspection or otherwise as to their accuracy. No person in this firm's employment has the authority to make or give any representation or warranty in respect of the property.