

## 52 Ridgeway Lane, Bristol, BS14 9PJ

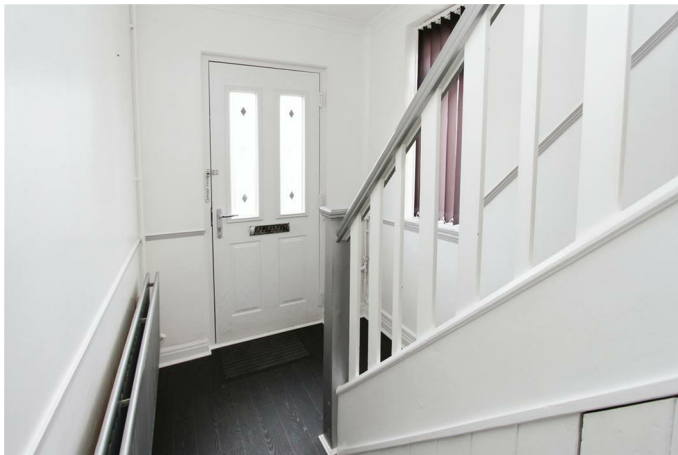
**£338,000**

This is a fantastic opportunity to acquire a neatly presented semi-detached property in a desirable location. The property is in good condition, neutrally decorated throughout, offering a modern and inviting atmosphere. With two spacious reception rooms, the property provides ample space for entertaining and relaxation. The sitting room seamlessly leads through an archway into the dining room, creating an open and versatile living space.

The property features three generous bedrooms, providing comfortable accommodation for a growing family or those seeking additional space. The stylish bathroom is well-appointed and designed with a focus on both functionality and aesthetics. The property also benefits from a well-equipped kitchen, providing a perfect space for culinary creativity.

The property boasts stunning views to Farmland at the rear. Additionally, the property benefits from a generous garden, providing the ideal space for outdoor activities and entertaining.

### Entrance Hall



### First Floor Landing



### Sitting Room



### Bedroom One



### Dining Room



### Bedroom Two



### Kitchen





### Bedroom Three



### Bathroom

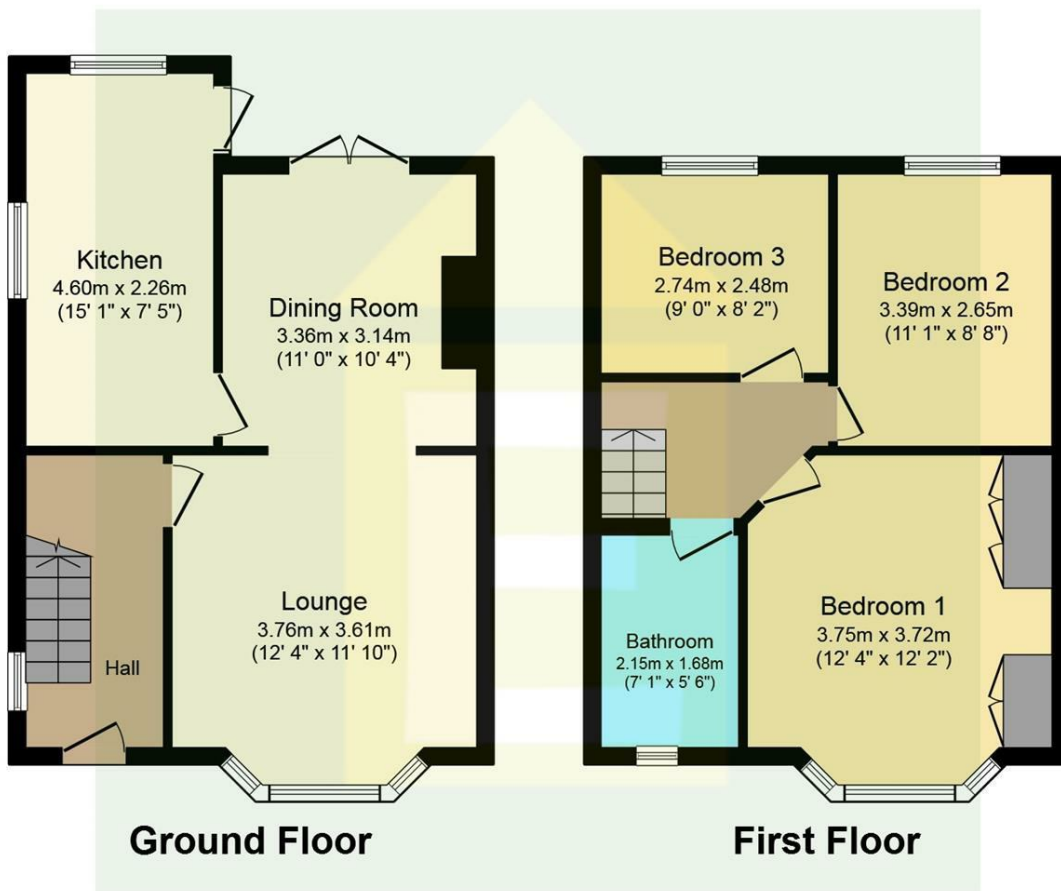


### View to Rear



### Outside

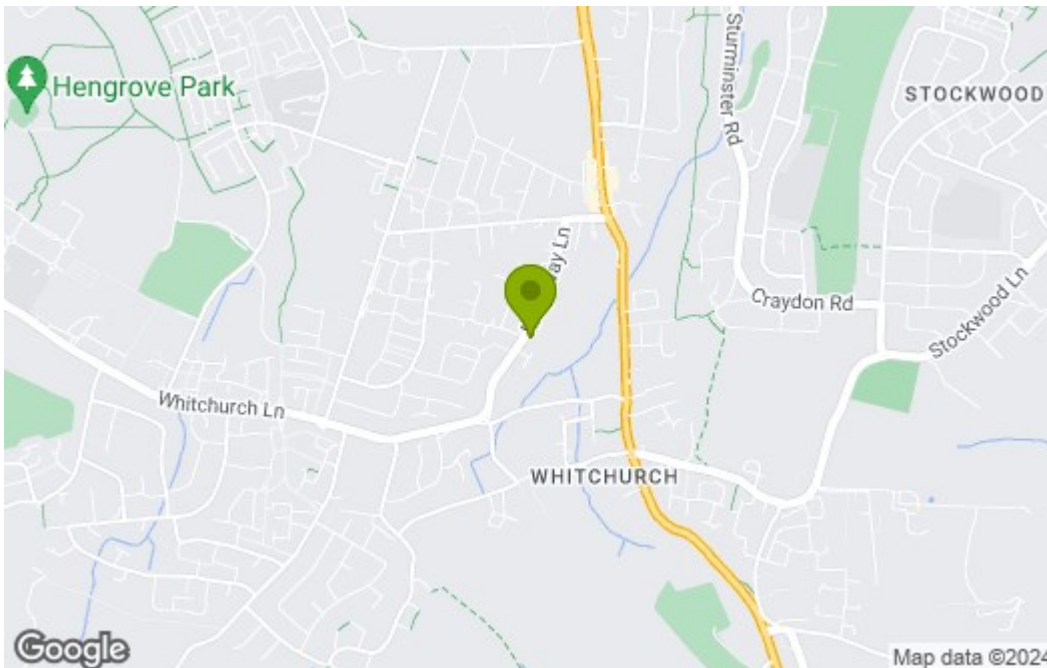
## Floor Plan



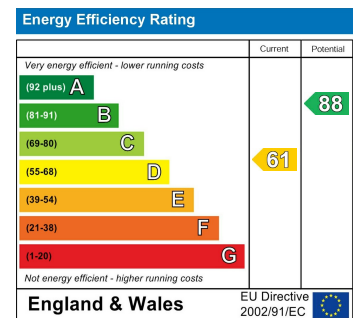
Total floor area 83.2 sq.m. (896 sq.ft.) approx

This plan is for illustration purposes only and may not be representative of the property. Plan not to scale. Powered by PropertyBox

## Area Map



## Energy Efficiency Graph



These particulars, whilst believed to be accurate are set out as a general outline only for guidance and do not constitute any part of an offer or contract. Intending purchasers should not rely on them as statements of representation of fact, but must satisfy themselves by inspection or otherwise as to their accuracy. No person in this firm's employment has the authority to make or give any representation or warranty in respect of the property.