



**Grafham Water Lodges Highfield Farm, Perry, PE28 0BN**  
**£995 Per Month**





# Grafham Water Lodges Highfield Farm, Perry, PE28 0BN

## £995 Per Month



### Stunning 2-Bedroom Bungalow in Idyllic Farm Setting

Discover this superb fully furnished 2-bedroom bungalow located in the picturesque surroundings of Perry, Huntingdon. Perfectly suited for those looking for a short-term rental (3-6 months), this charming wooden lodge offers comfort and convenience in an idyllic farm setting. With breathtaking views and proximity to Grafham Water, this property is a rare find.

### Spacious Living Area

The living area is designed for relaxation and practicality, featuring light tiled flooring, a TV, a comfortable couch, a table with chairs, and all necessary kitchen appliances. Whether you're staying for a few months or just a short break, you'll find everything you need right at your fingertips.

### Comfortable Bedrooms with Ensuites

Both bedrooms are generously sized at 4.35 x 2.9m, offering flexible sleeping arrangements with options for single or double beds. Each bedroom is equipped with a TV on the wall and can include all bedding and towels, ensuring a comfortable stay. The ensuites feature modern shower rooms, providing privacy and convenience.

### Fully Equipped Kitchen and Laundry Room

The kitchen comes fully equipped with cutlery, crockery, and all cooking items, making meal preparation a breeze. Additionally, there is a laundry room with a washing machine and a drying area, ensuring you have all the comforts of home.

### Outdoor Space and Scenic Surroundings

Enjoy the beautiful outdoors with an outside dining area directly outside the lodge. The property offers access to acres of walks, cycleways, and the Grafham Water Complex, perfect for those who love nature and outdoor activities.

### Convenient Amenities

This property is fully furnished and includes all bills (except for electricity and water, which are charged at £150 pcm). With allocated parking, high-speed WiFi, TV, and a licence included in the rent, you'll have everything you need for a comfortable and hassle-free stay.

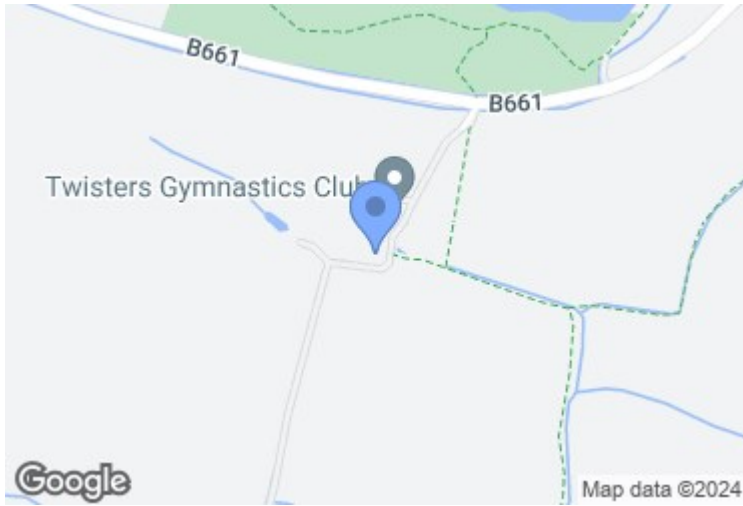
### Ideal Location

Located near Grafham Water, the lodges are perfectly situated for those who enjoy outdoor activities such as walking and cycling. The scenic farm setting provides a tranquil retreat while still being within easy reach of local amenities and attractions.

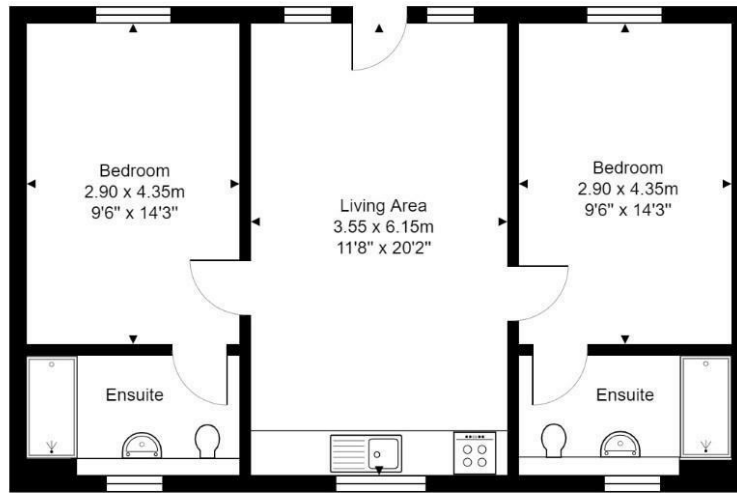
### Available Immediately

Don't miss out on this fantastic opportunity to rent a beautiful bungalow in an idyllic setting. The property is available immediately, making it an ideal choice for those seeking short-term accommodation.





Grafham Water Lodges, Perry



Total Area: 60.0 m<sup>2</sup> ... 646 ft<sup>2</sup>  
 All measurements are approximate and for display purposes only.

Energy Efficiency Rating		
	Current	Potential
Very energy efficient - lower running costs		
(92 plus) <b>A</b>		
(81-91) <b>B</b>		
(69-80) <b>C</b>		
(55-68) <b>D</b>		
(39-54) <b>E</b>		
(21-38) <b>F</b>		
(1-20) <b>G</b>		
Not energy efficient - higher running costs		
England & Wales	EU Directive 2002/91/EC	

Environmental Impact (CO <sub>2</sub> ) Rating		
	Current	Potential
Very environmentally friendly - lower CO <sub>2</sub> emissions		
(82 plus) <b>A</b>		
(61-81) <b>B</b>		
(49-60) <b>C</b>		
(35-48) <b>D</b>		
(19-34) <b>E</b>		
(11-30) <b>F</b>		
(1-10) <b>G</b>		
Not environmentally friendly - higher CO <sub>2</sub> emissions		
England & Wales	EU Directive 2002/91/EC	

These particulars, whilst believed to be accurate are set out as a general outline only for guidance and do not constitute any part of an offer or contract. Intending purchasers should not rely on them as statements of representation of fact, but must satisfy themselves by inspection or otherwise as to their accuracy. No person in this firm's employment has the authority to make or give any representation or warranty in respect of the property.