



2 Wentworth Court, Higher Lane
Manchester

In Excess of £230,000
cliveanthony
sales & lettings

2 Wentworth Court

Higher Lane, Manchester

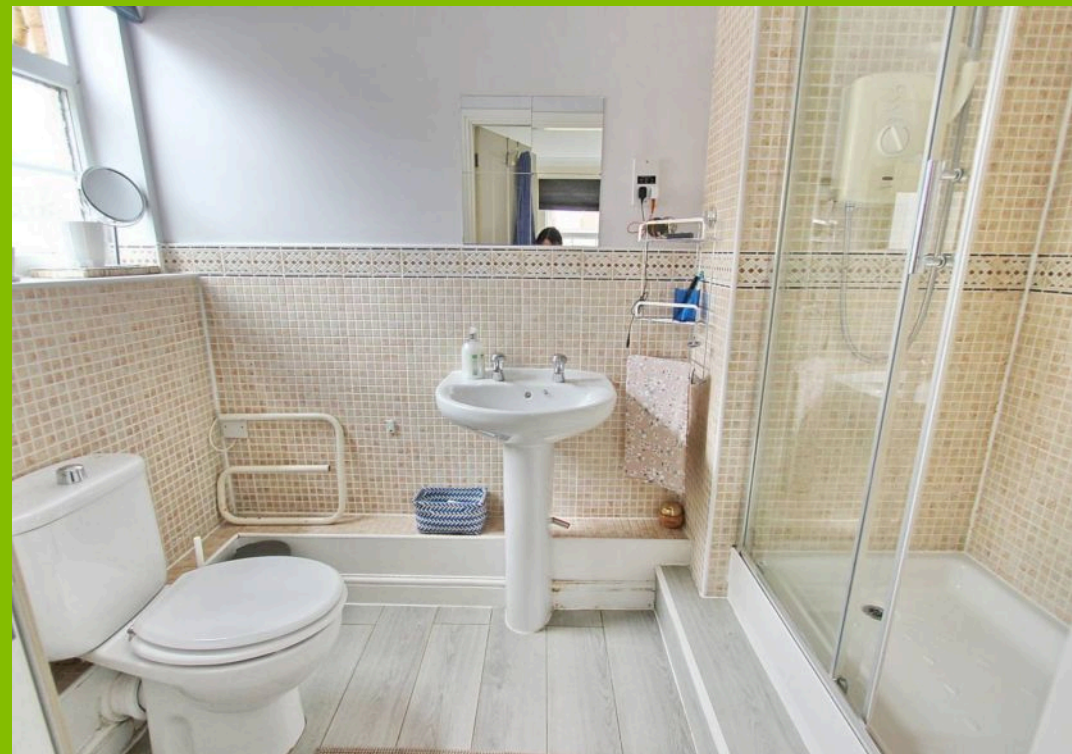
Council Tax band: C

Tenure: Leasehold

- Ground Floor Apartment In A Secure Gated Complex
- Communal Entranceway And Hallway
- Lounge/Dining Room With Patio Doors Onto The Patio Area And Gardens
- Modern Fitted Kitchen With Appliances
- Main Large Double Bedroom With Fitted Furniture
- Second Double Bedroom With Walk In Wardrobe
- Modern En Suite Shower Room Plus Bathroom Suite
- Attractive Communal Gardens Plus Private Patio Area
- Allocated Parking Plus Visitor Parking
- Close To Metrolink, Motorway Networks And Shops And Restaurants













Clive Anthony Sales & Lettings

487 Bury New Road, Prestwich - M25 1AD

0161 773 1111

street@cliveanthony.co.uk

www.cliveanthony.co.uk

cliveanthony
sales & lettings