



11 Burndale Drive, BURY

Bury

In Excess of £400,000

cliveanthony
sales & lettings

11 Burndale Drive

BURY, Bury

Council Tax band: E

Tenure: Freehold

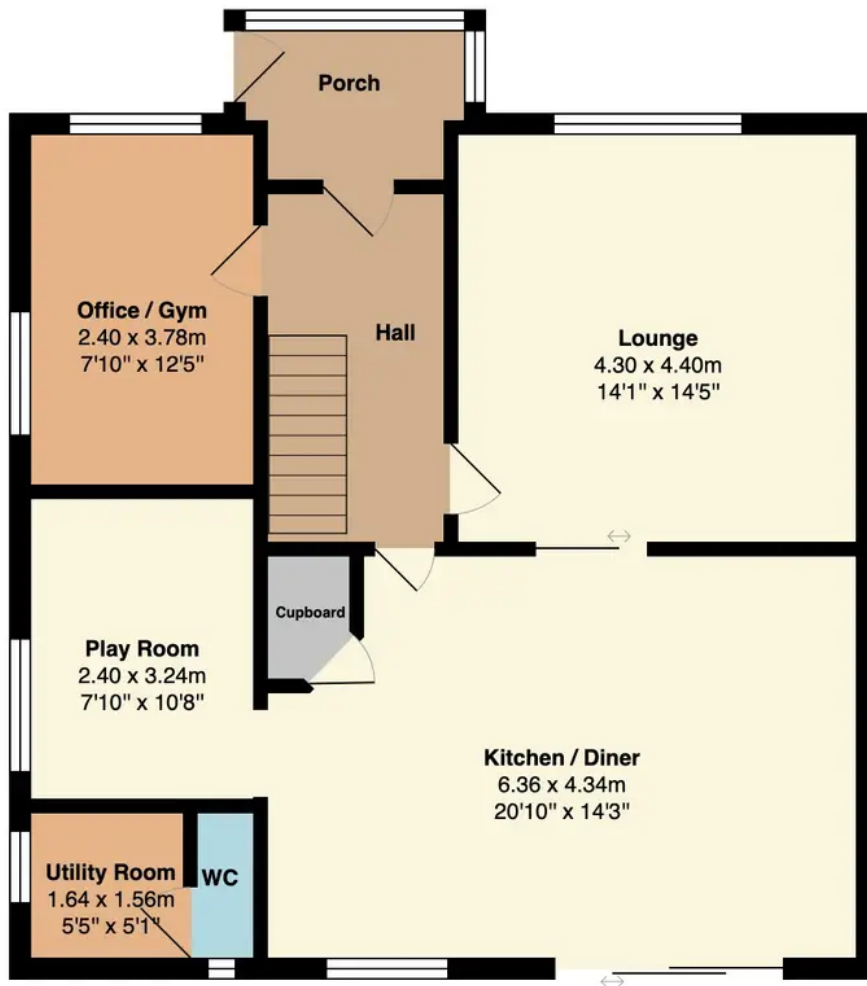
- Immaculately Presented And Modernised 'Dare' Built Detached Home On A Corner Plot Offering Scope To Further Extend
- Three DOUBLE Bedrooms
- Porch And Hallway; Modern Two Piece Ground Floor WC
- Spacious Lounge With Feature Living Flame Gas Fire
- Stunning Open Plan Kitchen/Dining And Sitting Area; Quartz Work Surfaces; Belling Range Style Cooker, Belfast Style Sink; Integrated Appliances; Sliding Patio Doors Onto Garden
- Family/TV Room Which Is Currently Used As A Play Room; Office And Utility Room
- Modern Four Piece Bathroom Suite
- Gardens To The Front, Side And Rear; Driveway To The Front And Rear Plus Detached Garage
- Popular Location Close To Local Shops, Good Schools And The Motorway Networks - IDEAL FAMILY HOME



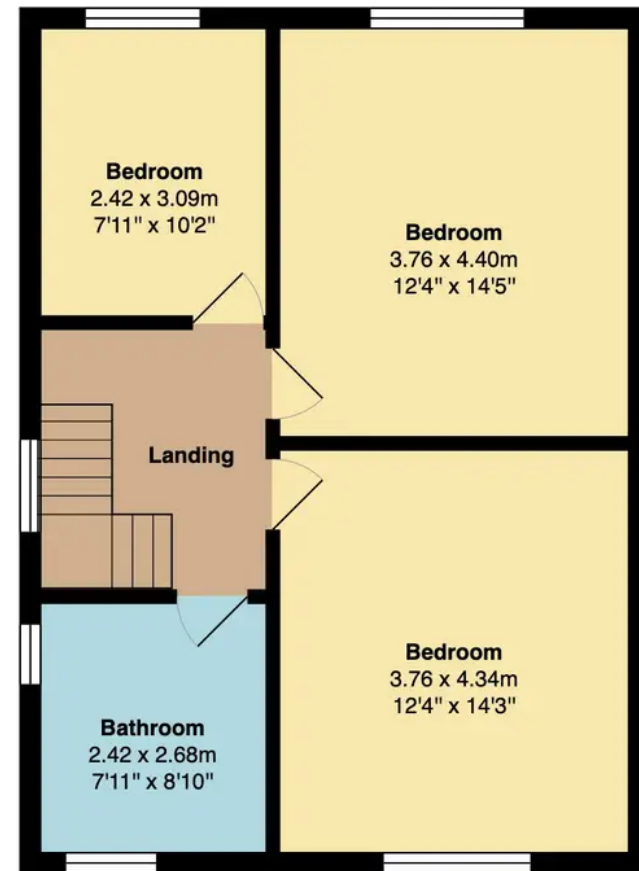








Ground Floor
Area: 82.0 m² ... 883 ft²



First Floor
Area: 56.4 m² ... 608 ft²

Total Area: 138.5 m² ... 1491 ft²





Clive Anthony Sales & Lettings

487 Bury New Road, Prestwich - M25 1AD

0161 773 1111

street@cliveanthony.co.uk

www.cliveanthony.co.uk

cliveanthony
sales & lettings