



6 Ringley Drive, Whitefield
Manchester

In Excess of £875,000

cliveanthony
sales & lettings

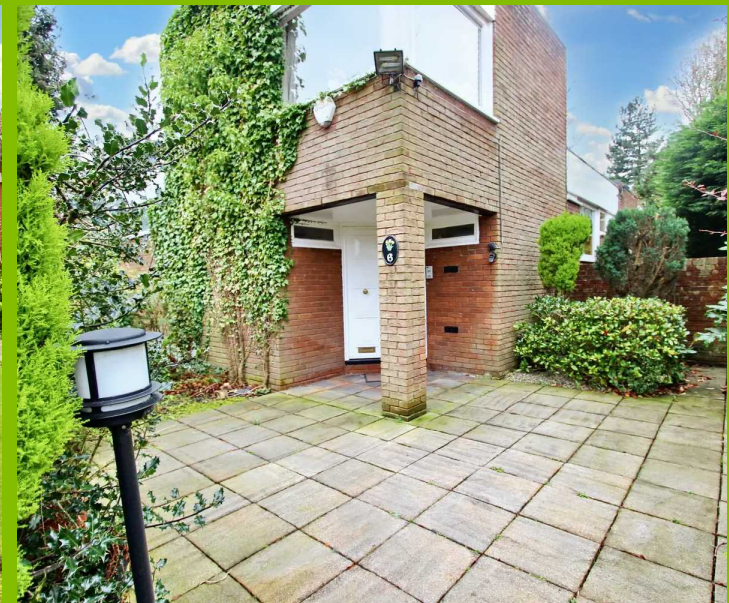
6 Ringley Drive

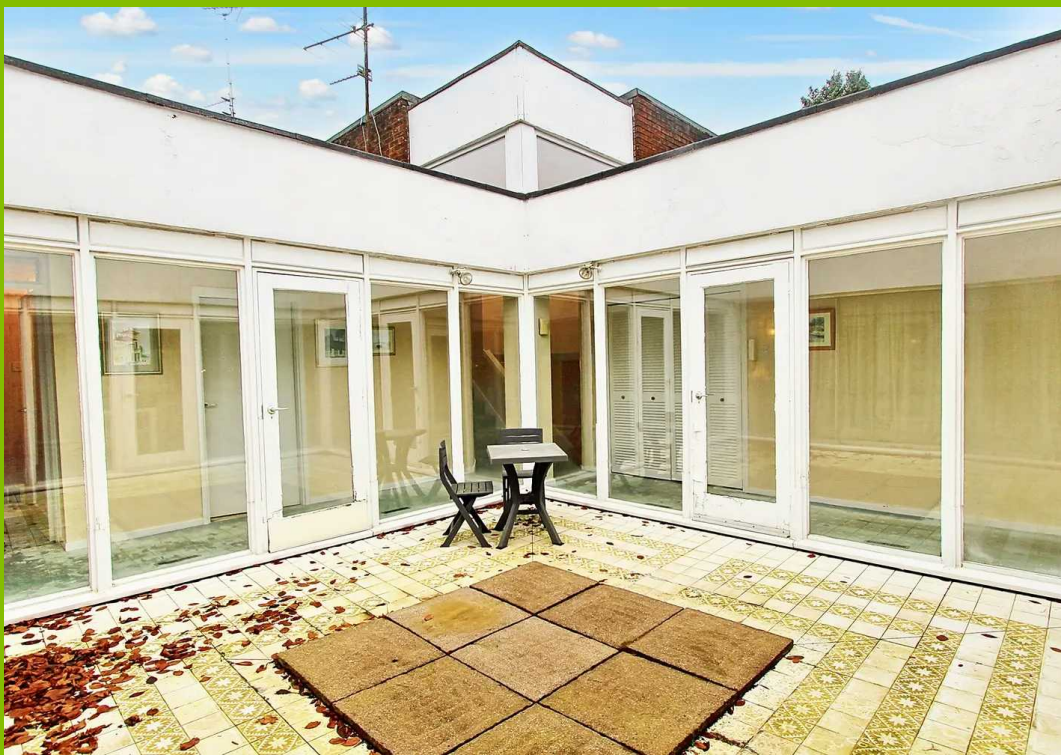
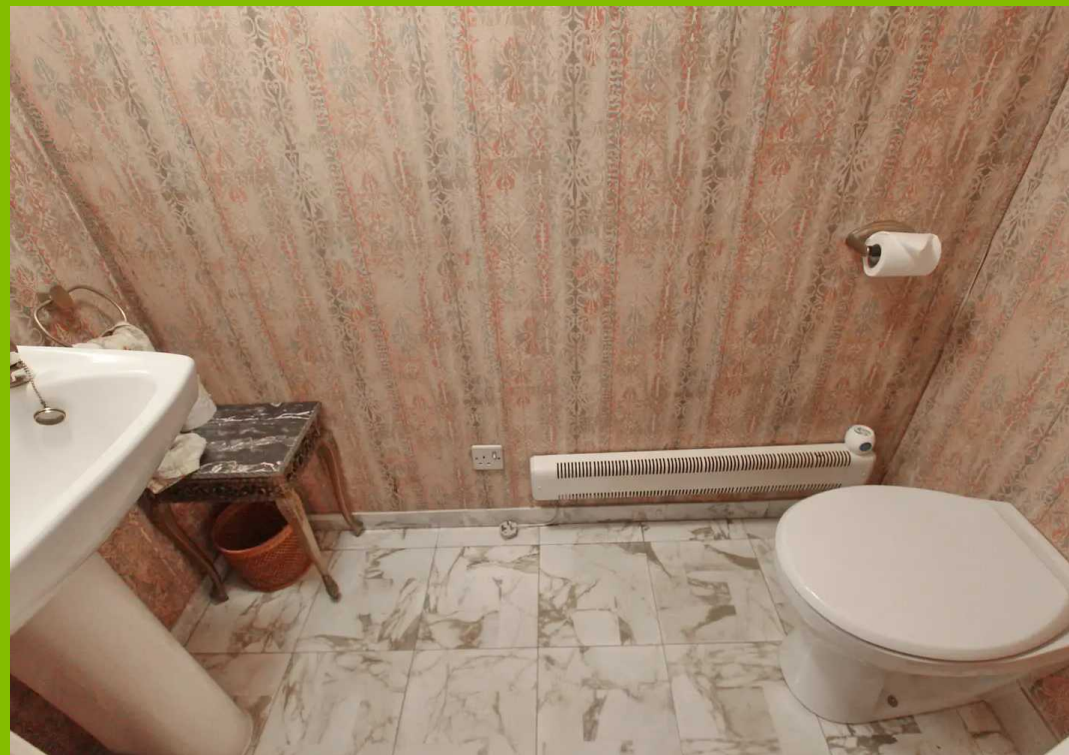
Whitefield, Manchester

Council Tax band: H

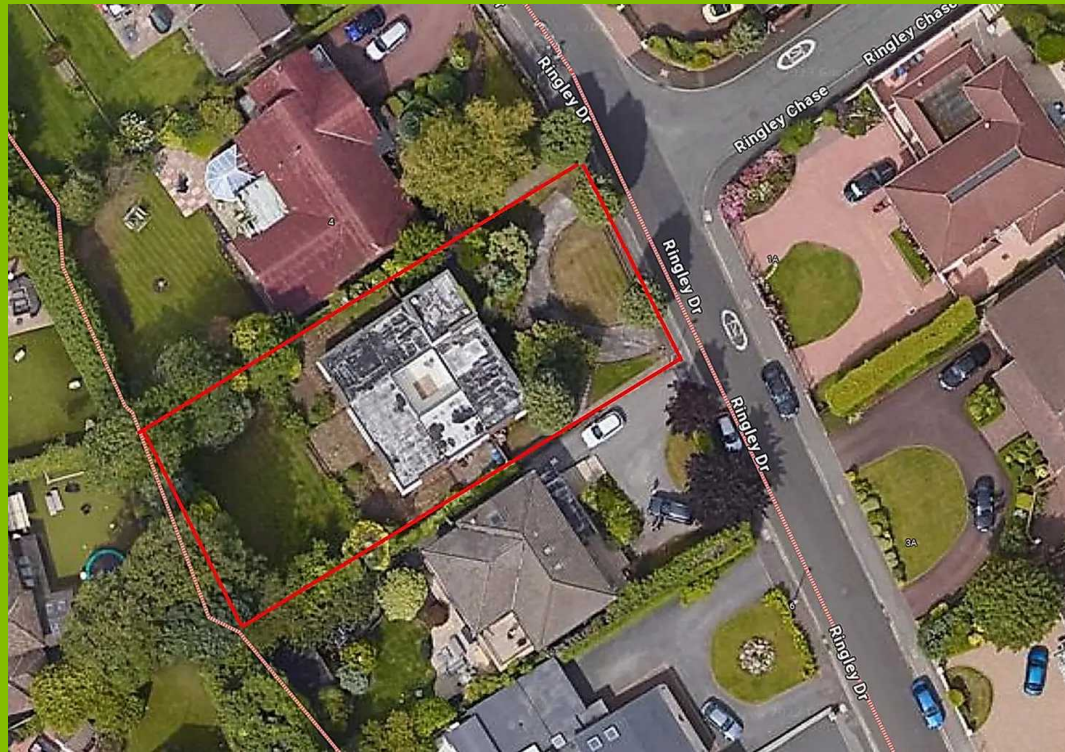
Tenure: Freehold

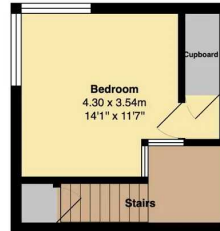
- Individually Architect Designed Detached Family Home In A Prestigious Location
- Large Plot Offering Scope To Improve, Extend And Add Value
- Spacious Lounge/Dining Room With Enjoyable Views Over The Garden
- Modern Dining Kitchen With Granite Work Surfaces And Integrated Appliances
- Four Double Bedrooms With The Option To Use One As An Extra Reception Room, If Required
- Unique Quad Patio
- Walk In Wardrobe And Five Piece En Suite To The Main Bedroom
- Ground Floor WC And Utility Room Plus Modern Family Bathroom Suite
- Deceptively Large Garden With Deep Borders To The Rear Elevation
- Double Garage With Electric Door Plus Large Circular In/Out Driveway



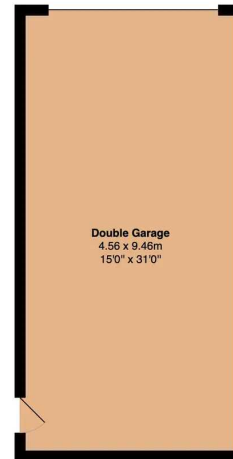








First Floor
Area: 19.5 m² ... 210 ft²



Lower Ground Floor
Area: 43.1 m² ... 464 ft²



Ground Floor
Area: 196.8 m² ... 2118 ft²
Total Area: 259.4 m² ... 2792 ft²



Clive Anthony Sales & Lettings

487 Bury New Road, Prestwich - M25 1AD

0161 773 1111

street@cliveanthony.co.uk

www.cliveanthony.co.uk

cliveanthony
sales & lettings