



1 Ten Acre Court, Ringley Road
Manchester

In Excess of £225,000

cliveanthony
sales & lettings

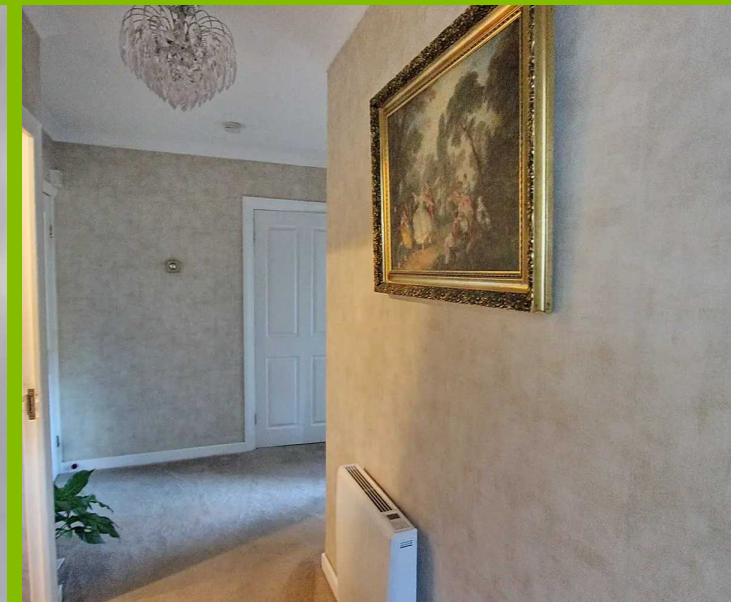
1 Ten Acre Court

Ringley Road, Manchester

Council Tax band: C

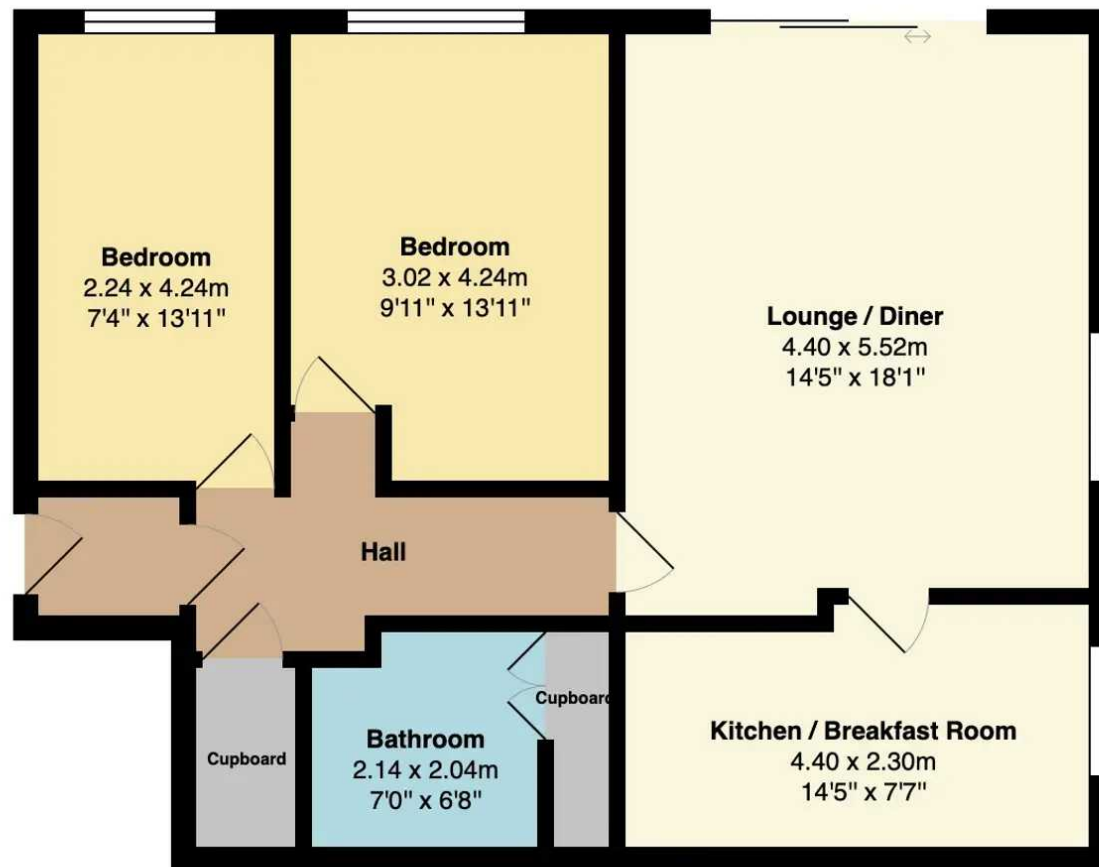
Tenure: Leasehold

- Ground Floor Two Bedroom Apartment
- Prime Location Off Ringley Road, Whitefield
- Spacious Lounge/Dining Room With A Abundance Of Natural Light
- Modern Dining Kitchen With Integrated Oven, Hob And Dishwasher
- Both Bedrooms Include Fitted Furniture
- Modern Shower Room/WC With A Utility Cupboard With Space For Washing Machine And A Dryer
- Well Maintained Communal Gardens
- Communal Parking Area









Ground Floor
Area: 73.7 m² ... 794 ft²





Clive Anthony Sales & Lettings

487 Bury New Road, Prestwich - M25 1AD

0161 773 1111

street@cliveanthony.co.uk

www.cliveanthony.co.uk

cliveanthony
sales & lettings