

for sale

£190,000 Leasehold



Meadow Way Carterton OX18 1HA

We are excited to be marketing this two bedroom first floor property in Carterton. Call to arrange your viewing now.



Property Details

Entrance Hall

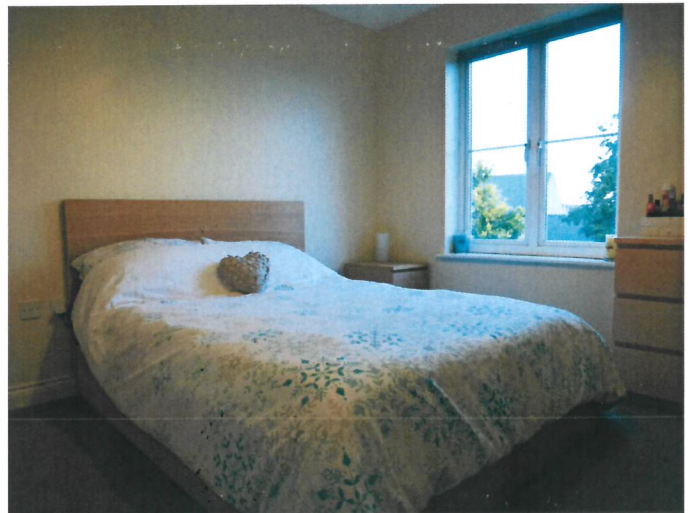
Lounge 17'7 x 10'2

Kitchen 8' 5" x 6' 9" (2.57m x 2.06m)

Bedroom One 10' 1" x 10' (3.07m x 3.05m)

En Suite

Bedroom Two 12' 10" x 6' 8" (3.91m x 2.03m)



To view this property please contact Connells on

T 01993 847309

E carterton@connells.co.uk

2a Marigold Square Shilton Park
CARTERTON OX18 1AQ

Tenure: Leasehold

EPC Rating: Awaited

Property Ref: CAR101159 - 0004

Lease details are currently being compiled. For further information please contact the branch. Please note additional fees could be incurred for items such as leasehold packs.

1. MONEY LAUNDERING REGULATIONS Intending purchasers will be asked to produce identification documentation at a later stage and we would ask for your co-operation in order that there will be no delay in agreeing the sale. 2. These particulars do not constitute part or all of an offer or contract. 3. The measurements indicated are supplied for guidance only and as such must be considered incorrect. Potential buyers are advised to recheck measurements before committing to any expense. 4. We have not tested any apparatus, equipment, fixtures, fittings or services and it is in the buyers interest to check the working condition of any appliances.

see all our properties at www.connells.co.uk | www.rightmove.co.uk | www.zoopla.co.uk