

Milestone Road

CARTERTON OX18 3RF

THE DEVELOPMENT

Discover two unique and exquisite homes nestled in the heart of the charming Oxfordshire town of Carterton. This fantastic development offers two beautifully built semi-detached homes.

Both homes offer stunning kitchens with an abundance of storage, light and airy reception room with storage and doors opening on to the gardens. With three bedrooms, the master with ensuite shower room and a stunning family bathroom.

Each home is spacious and thoughtfully designed, perfect for modern living. Both include driveway parking and no onward chain.





KEY FEATURES

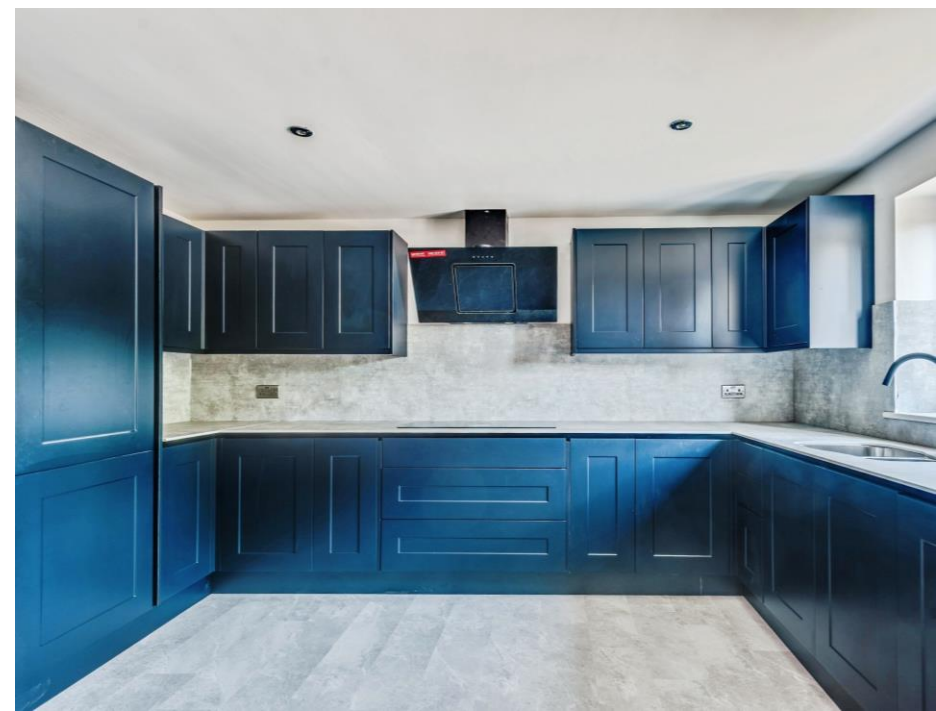
READY TO MOVE IN
SEMI-DETACHED HOMES
EXQUISITELY DESIGNED
INDIVIDUALLY DESIGNED KITCHENS
SOLAR PANELS
UNDERFLOOR HEATING
INTERGRATED APPLIANCES
FULL HEIGHT FRIDGE
FULL HEIGHT FREEZER
DOUBLE OVEN INCLUDING AIR FRYER OVEN
THREE BEDROOMS
EN-SUITE TO MASTER BEDROOM
FRENCH DOORS TO THE GARDEN
SMART STORAGE SOLUTIONS
UTILITY CUPBOARD
GARDENS WITH DECK AND PERGOLA
INDIAN SANDSTONE PATIO'S
DRIVEWAY PARKING
FULLY BOARDED LOFT SPACE
SIDE ACCESS
LOCATED IN CARTERTON
NO ONWARD CHAIN



THE KITCHENS

Imagine a kitchen where sophisticated design meets unparalleled functionality, a stunning, well-equipped kitchen from Howdens, finished in a deep, captivating dark blue. This isn't just a kitchen; it's the heart of your home, meticulously designed to inspire culinary creativity and provide a beautiful, welcoming space for family and friends.

You will find high-performance integrated appliances, including double oven with a technology smart air fryer oven, hob, dishwasher, full height fridge and full height freezer. These not only contribute to the sleek aesthetic but also provide reliable and efficient performance, with a plethora of intelligent storage options including integrated bin and blind corner pull out organizer, every utensil and ingredient will have its place, keeping your countertops clear and your kitchen organized. Complementing the dark blue cabinetry are hardwearing and stylish worktops that provide generous preparation space.





THE RECEPTION ROOM



BEDROOM & EN-SUITE



BEDROOMS & BATHROOM





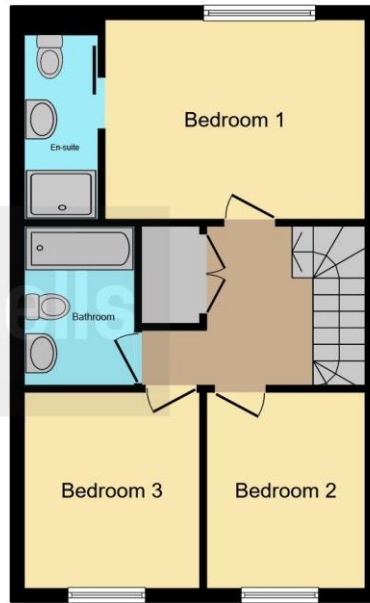
OUTSIDE SPACE



FLOOR PLANS



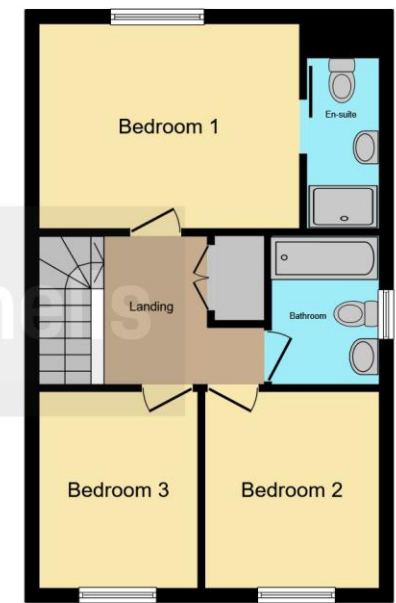
Ground Floor



First Floor



Ground Floor



floor plan

This floor plan is for illustrative purposes only. It is not drawn to scale. Any measurements, floor areas (including any total floor area), openings and orientation are approximate. No details are guaranteed, they cannot be relied upon for any purpose and they do not form part of any agreement. No liability is taken for any error, omission or misstatement. A party must rely upon its own inspection(s). Powered by www.focalagent.com

This floor plan is for illustrative purposes only. It is not drawn to scale. Any measurements, floor areas (including any total floor area), openings and orientation are approximate. No details are guaranteed, they cannot be relied upon for any purpose and they do not form part of any agreement. No liability is taken for any error, omission or misstatement. A party must rely upon its own inspection(s). Powered by www.focalagent.com