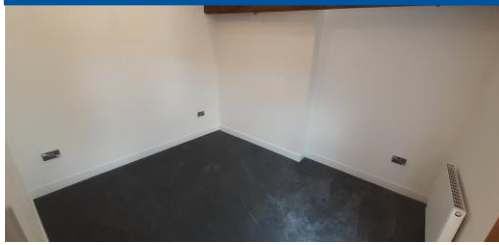




APT 2 | 24A MARSTON RD | STAFFORD | ST16 3BS

£895 pcm

STUNNING TOP FLOOR APARTMENT. This beautifully presented two bedroomed apartment is ideally located close to the heart of Stafford Town centre as well as all major commuter links. This second floor accommodation comprises of a spacious open plan kitchen and lounge, master bedroom with ensuite, large second bedroom and family bathroom. There is also secure off road parking to the rear. The Council Tax is Band 'A' with Stafford Borough Council.



Contact Details

The Estate Office
5 King Street
Newcastle
Staffordshire
ST5 1EN

www.louistaylor.co.uk
lettings@louis-taylor.co.uk
01782 639540

%epcGraph_c_1_349%

Agents Note: Whilst every care has been taken to prepare these sales particulars, they are for guidance purposes only. All measurements are approximate are for general guidance purposes only and whilst every care has been taken to ensure their accuracy, they should not be relied upon and potential buyers are advised to recheck the measurements