



## 10 Cross Street, Rhuddlan, LL18

£180,000 Freehold

Nestled in the sought-after village of Rhuddlan, this cosy two bedroom terrace cottage has undergone recent renovations and is now available for sale without any onward chain.

**SIMPLY ESTATES**





### **Porch**

5' 9" x 3' 4" (1.74m x 1.02m)

This charming porch is a delightful addition to the property, combining practicality with aesthetic appeal to create a welcoming and versatile space.

### **Lounge**

14' 8" x 11' 4" (4.46m x 3.46m)

This living room offers a generous amount of space, creating a warm and welcoming environment perfect for relaxation and entertaining guests. High-quality flooring, adds to the room's comfort and style.

### **Main Bedroom**

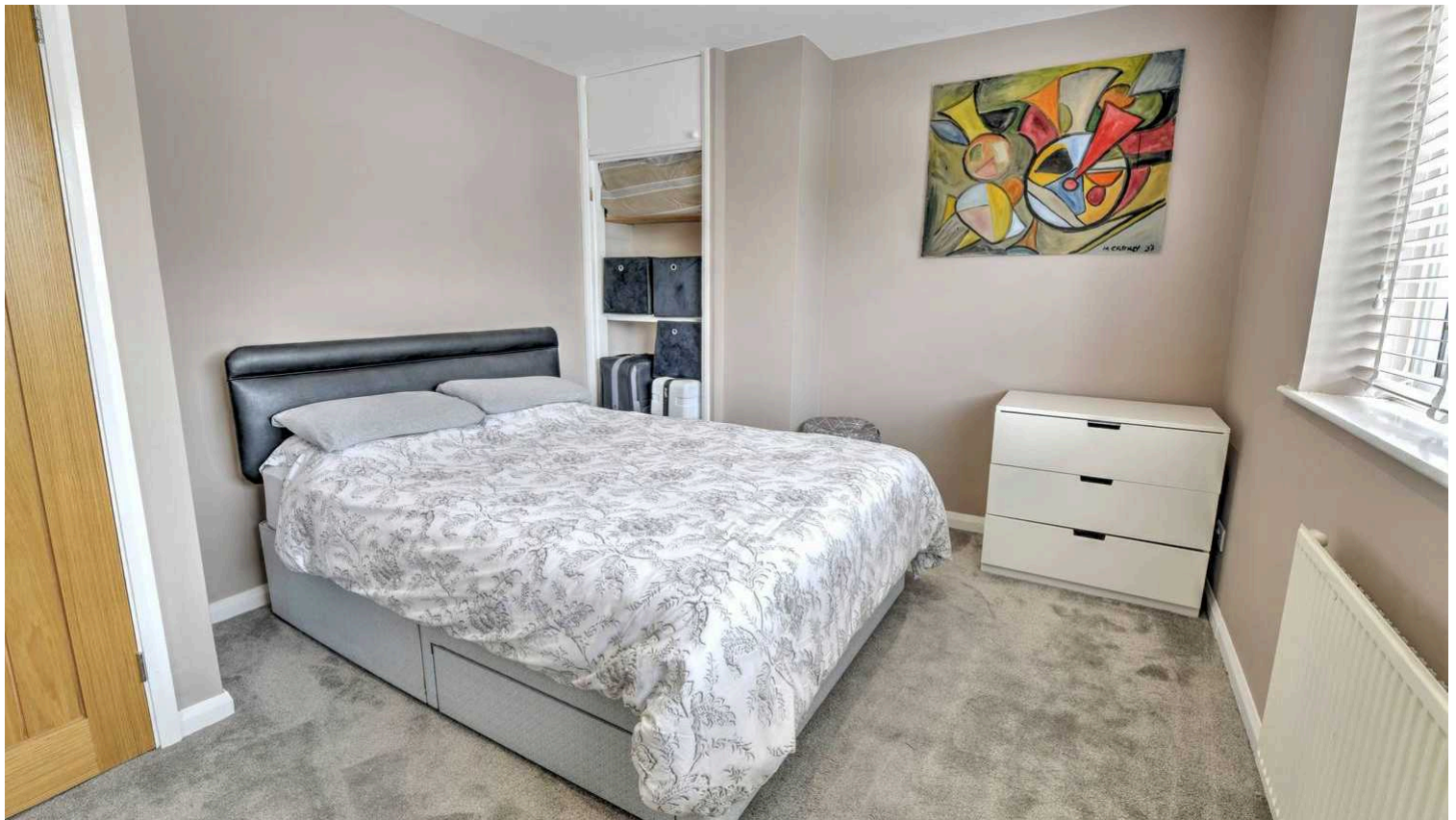
12' 2" x 10' 7" (3.72m x 3.23m)

The main bedroom provides generous space for relaxation, with a large window allowing plenty of natural light and beautiful views. Fitted wardrobes offer ample storage, helping keep the space organised and clutter-free.

### **Bedroom Two**

12' 7" x 8' 4" (3.84m x 2.53m)

The second bedroom, neutrally decorated with plush fitted carpets, provides a wonderful space for guests or children. In addition, there is plenty of space for bedroom furniture or office space.





### **Kitchen**

11' 5" x 8' 6" (3.47m x 2.60m)

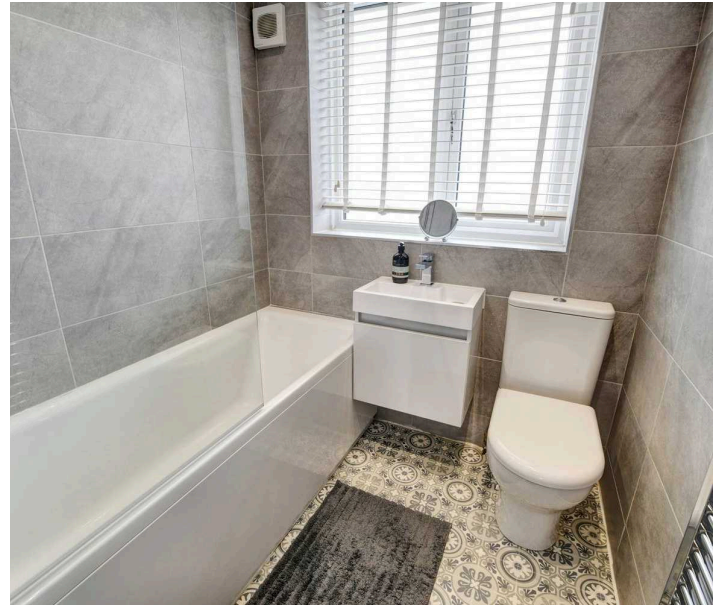
This newly renovated contemporary kitchen showcases a sleek and stylish design, blending aesthetics with practicality. It comes equipped with integrated appliances, including a built-in oven, hob, and refrigerator, ensuring functionality with a modern touch.



### **Bathroom**

5' 9" x 5' 3" (1.76m x 1.60m)

This stylish, modern bathroom has been designed to maximise space, it features a three-piece suite complete with an over-bath shower, combining style with functionality.



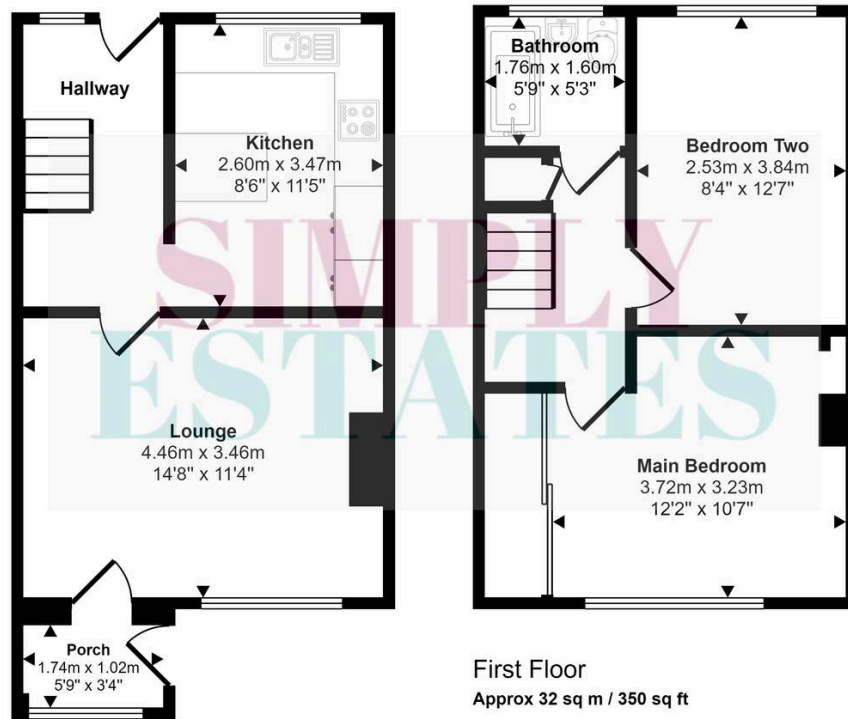
### **External Areas**

The front garden, with its combination of paved pathways and flower beds, ensures minimal upkeep while offering aesthetic appeal and convenience effortlessly. Furthermore, the property features a private rear yard with shed for storage.





Approx Gross Internal Area  
66 sq m / 715 sq ft



Ground Floor  
Approx 34 sq m / 365 sq ft

First Floor  
Approx 32 sq m / 350 sq ft

This floorplan is only for illustrative purposes and is not to scale. Measurements of rooms, doors, windows, and any items are approximate and no responsibility is taken for any error, omission or mis-statement. Icons of items such as bathroom suites are representations only and may not look like the real items. Made with Made Snappy 360.

## Discover the Simply Estates Advantage!

Are you looking to sell your property? At Simply Estates, we offer a personalised, family-run service with a commission rate of just 0.9% and no VAT. Experience the difference with our dedicated team.

Contact us today on 01745 590919 or [Rhuddlan@simplyestates.co.uk](mailto:Rhuddlan@simplyestates.co.uk)



# SIMPLY ESTATES