



Connells

Rambouillet Drive
Whitehouse Milton Keynes

Rambouillet Drive Whitehouse Milton Keynes MK8 1GH

for sale
£525,000



Property Description

Connells Oxley Park are delighted to bring to market this four-bedroom detached home on Rambouillet Drive, set within the highly sought after Whitehouse area of Milton Keynes.

Beautifully presented throughout, the property offers modern living across two floors. The ground floor features a bright and spacious living room, a contemporary kitchen/diner with a separate utility room, and a convenient downstairs cloakroom. Upstairs, the generous landing leads to four well-proportioned bedrooms, including a principal bedroom with en suite, along with a stylish family bathroom.

Externally, the home benefits from driveway parking to the front, while the rear boasts a sizeable, private, and fully enclosed garden, mainly laid to lawn ideal for families and outdoor entertaining.

Perfectly positioned, the property enjoys excellent public transport links for effortless commuting, as well as a selection of nearby schools. Local amenities and green open spaces are also within easy reach, offering everything from everyday convenience to relaxing weekend walks.

Ground Floor

Entrance Hall

Leads to Living room, kitchen/diner and the stairs rising to the first floor. Handy understairs cupboard. Wall mounted radiator.

Living Room

Front aspect double glazed Bay window. Wall mounted radiator.

Kitchen/Diner

Rear aspect double glazed window and double doors leading out to the rear garden. Modern kitchen with built in modern appliances, plenty of storage options. Space for dining. Wall mounted radiator.

Utility Room

Space for washing machine.

Cloakroom

Side aspect frosted double glazed window. Comprises of a wash hand basin and WC. Wall mounted radiator.



First Floor

Landing

Leads to all four bedrooms, the bathroom and the stairs descending to the ground floor. Wall mounted radiator.

Bedroom One

Front aspect double glazed window. Built in cupboards. Door leading to en suite. Wall mounted radiator.

En Suite

Side aspect frosted double glazed window. Comprises of a wash hand basin, WC and shower. Door leading through to the bedroom. Wall mounted radiator.

Bedroom Two

Rear aspect double glazed window. Fitted cupboard. Wall mounted radiator.

Bedroom Three

Rear aspect double glazed window. Wall mounted radiator.

Bedroom Four

Front aspect double glazed window. Wall mounted radiator.

Bathroom

Side aspect double glazed window. Comprises of a wash hand basin, WC and bath with shower overhead. Wall mounted radiator.

Outside

Garden

Front Garden is mainly driveway with some greenery by the front door and down the side of the path. The private enclosed rear garden is mainly laid to lawn with a small paved area directly in front of the double patio doors. There is also a shed within this space which is handy for storage.

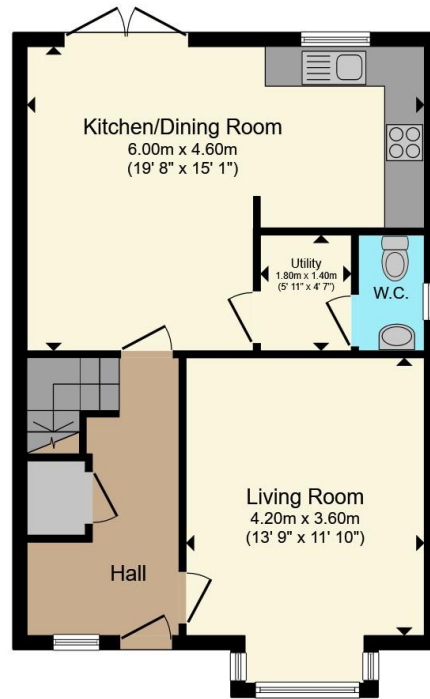
Driveway

Driveway parking to the front of the property.









Ground Floor



First Floor

Total floor area 108.1 m² (1,163 sq.ft.) approx

This floor plan is for illustrative purposes only. It is not drawn to scale. Any measurements, floor areas (including any total floor area), openings and orientation are approximate. No details are guaranteed, they cannot be relied upon for any purpose and they do not form part of any agreement. No liability is taken for any error, omission or misstatement. A party must rely upon its own inspection(s). Powered by www.propertybox.io



To view this property please contact Connells on

T 01908 330751
E oxleypark@connells.co.uk

Unit 10 64 Redgrave Drive Oxley Park
MILTON KEYNES MK4 4TB

EPC Rating: B Council Tax
Band: E

Tenure: Freehold

view this property online connells.co.uk/Property/OXP106737



1. MONEY LAUNDERING REGULATIONS Intending purchasers will be asked to produce identification documentation at a later stage and we would ask for your co-operation in order that there will be no delay in agreeing the sale. 2. These particulars do not constitute part or all of an offer or contract. 3. The measurements indicated are supplied for guidance only and as such must be considered incorrect. Potential buyers are advised to recheck measurements before committing to any expense. 4. We have not tested any apparatus, equipment, fixtures, fittings or services and it is in the buyers interest to check the working condition of any appliances.

Connells Residential is registered in England and Wales under company number 1489613, Registered Office is Cumbria House, 16-20 Hockliffe Street, Leighton Buzzard, Bedfordshire, LU7 1GN. VAT Registration Number is 500 2481 05.

See all our properties at www.connells.co.uk | www.rightmove.co.uk | www.zoopla.co.uk

Property Ref: OXP106737 - 0003