

THE LEIGH

The Leigh is a three bedroom family home spread over three floors. The top floor hosts a generously sized main bedroom and en suite bathroom. While the two bedrooms on the first floor share a family bathroom. The downstairs, provides a kitchen and separate living-dining area that can accommodate the various demands of family life with the addition of a convenient ground floor cloakroom.

3 BEDROOM HOME

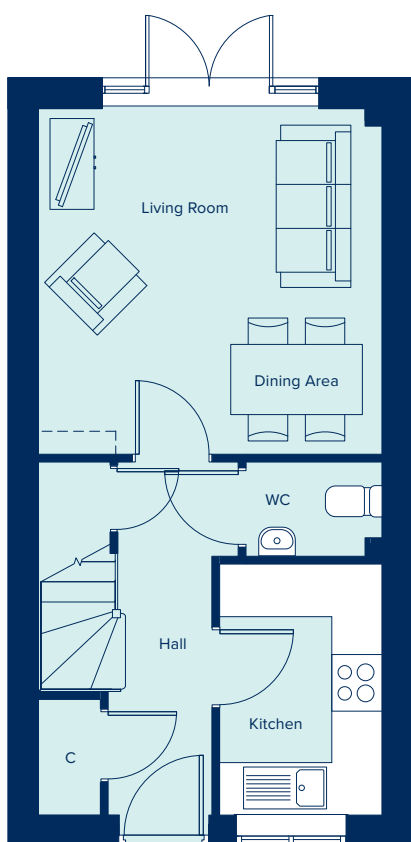




**CREST
NICHOLSON**

THE LEIGH
3 Bedroom Home

crestnicholson.com



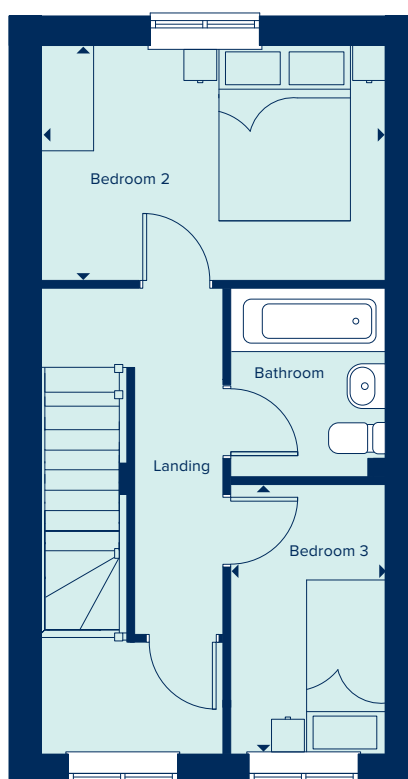
GROUND FLOOR

KITCHEN

2.86m x 1.86m 9'4" x 6'1"

LIVING / DINING AREA

3.93m x 3.92m 12'10" x 12'10"



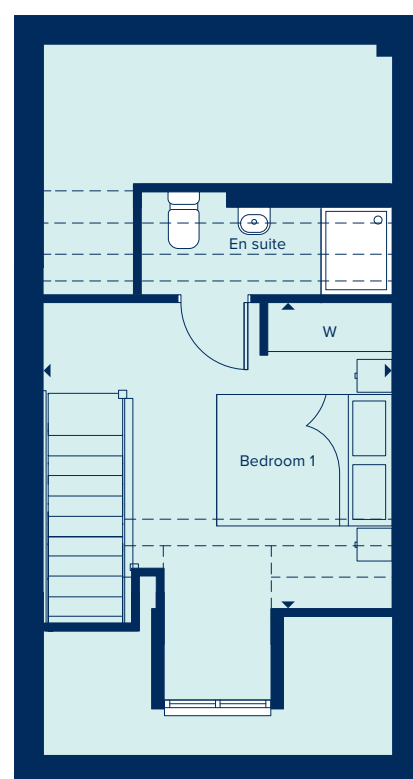
FIRST FLOOR

BEDROOM 2

3.93m x 2.66m 12'10" x 8'8"

BEDROOM 3

3.07m x 1.77m 10'1" x 5'9"



SECOND FLOOR

BEDROOM 1

3.93m x 3.48m 12'10" x 11'5"

1500 Head Height
1800 Head Height
2100 Head Height
Full Height

C Cupboard W Wardrobe

Please note, the digital illustrations are for illustration purposes only and any may not accurately depict elevation materials, gradients, landscaping or street furniture and may be subject to change. Whilst every effort has been made to ensure that the measurements and dimensions referred to in this brochure are an accurate reflection of the dimensions and measurements of the plots when built, the dimensions may vary from the measurements shown in the brochure save that any such variation shall be no greater than +/- 50mm of the measurements referred to in the brochure. You are strongly advised, therefore, not to order any carpets, appliances or any other goods which depend on precise dimensions before carrying out an actual measurement within your reserved plot. Whilst every reasonable effort has been made to ensure that the information contained in this brochure is correct, it is designed specifically as a guide only and does not constitute or form any part of a contract of sale transfer or lease unless any point that you specifically want to rely on is confirmed in writing by Crest Nicholson and is referred to in the contract. Please ask a sales executive for further details. Crest Nicholson is a registered developer with the New Homes Quality Code. Please speak to a sales executive if you need further help with any marketing material including provision in another format. STU10354/January 2023.

