



Connells

Champflower
Furzton Milton Keynes

Champflower Furzton Milton Keynes MK4 1LD

for sale offers in excess of
£200,000



Property Description

New to the market is this well presented two bedroom, maisonette in the sought after area of Furzton The accommodation comprises of an entrance hall with stairs leading to the first floor. The first floor houses the kitchen with built in oven and hob, living room and bedroom one. Stairs leads up to the second floor where the second bedroom is and a generous sized family bathroom. Outside has parking for two vehicles. The picturesque Furzton Lake is only a short walk away with lakeside pub, hotel and restaurant. Also just down the road is the primary school, doctor's surgery, pharmacy and other local amenities including a Tesco Express. The property is a short distance away from central Milton Keynes, the Buckingham countryside & numerous commuting routes. Call Connells on 01908 330751 to arrange a viewing to this charming Maisonette.

Entrance Hall

Double glazed door opening onto hallway. Stairs leading to first floor with under stair storage. Wall mounted electric heater on landing.

Kitchen

13' 1" x 5' 9" (3.99m x 1.75m)

Double glazed window. Fitted kitchen with a mix of wall and base level units, work surfaces incorporating stainless steel sink unit. Built in electric oven and hob. Space for washing machine and fridge freezer.

Living Room

13' 1" x 9' 7" (3.99m x 2.92m)

Two double glazed windows. Wall mounted electric heater.

Bedroom One

13' 1" x 9' 10" (3.99m x 3.00m)

Double glazed window. Wall mounted electric heater.

Second Floor Landing

Stairs rising from first floor. Airing cupboard and loft access. Double glazed window.

Bedroom Two

11' 1" x 12' 11" (3.38m x 3.94m)

Double glazed eaves window. Wall mounted electric heated.

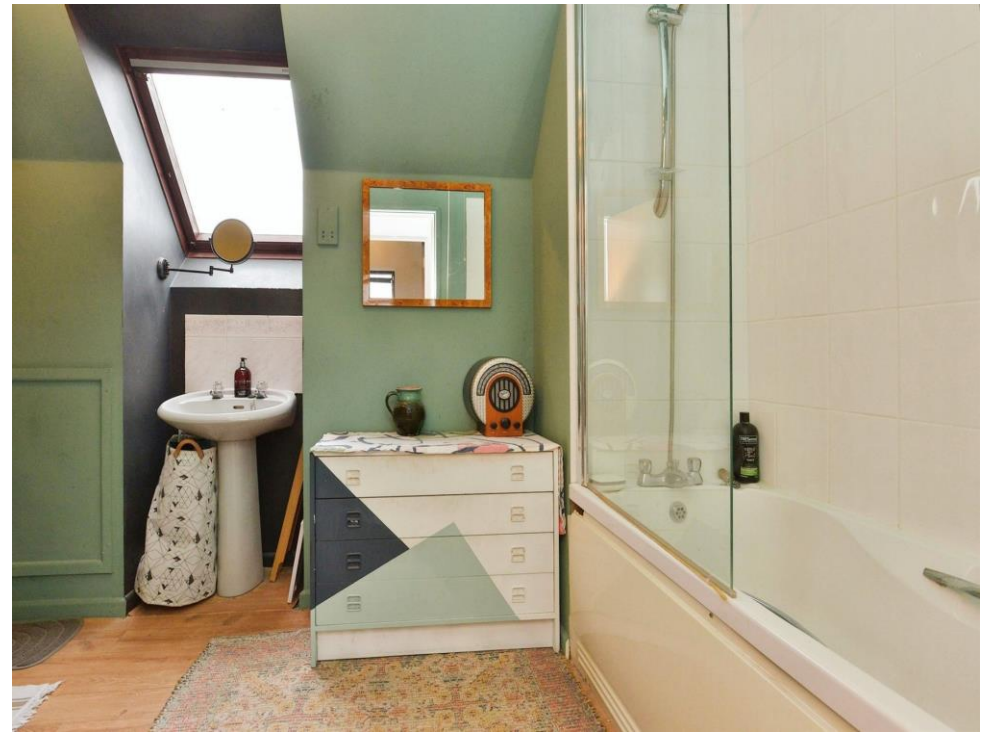
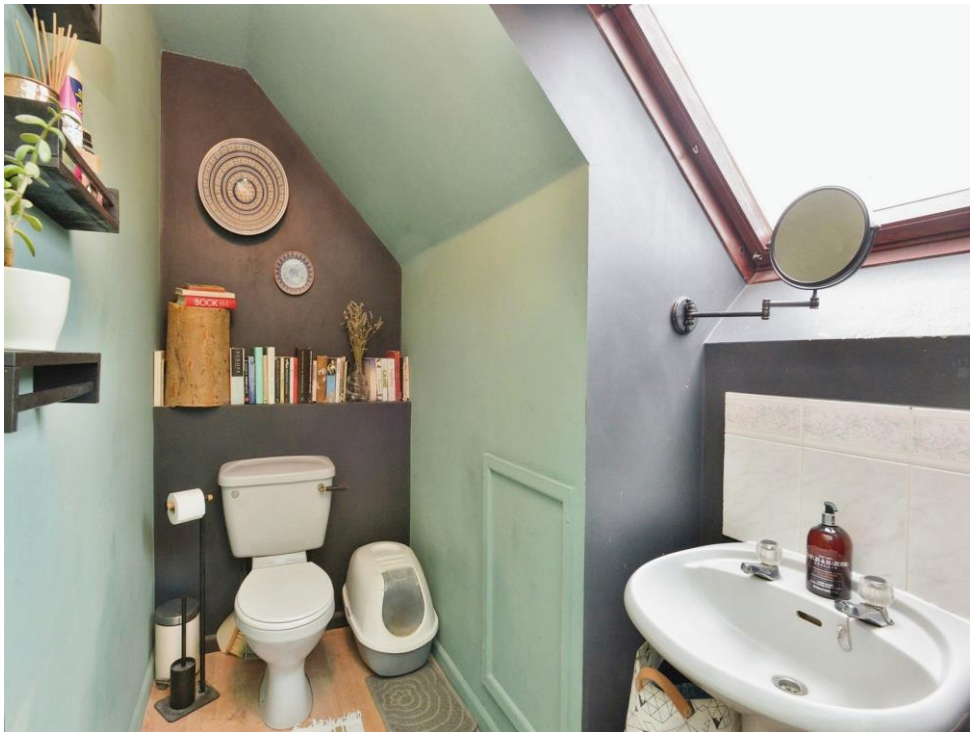
Bathroom

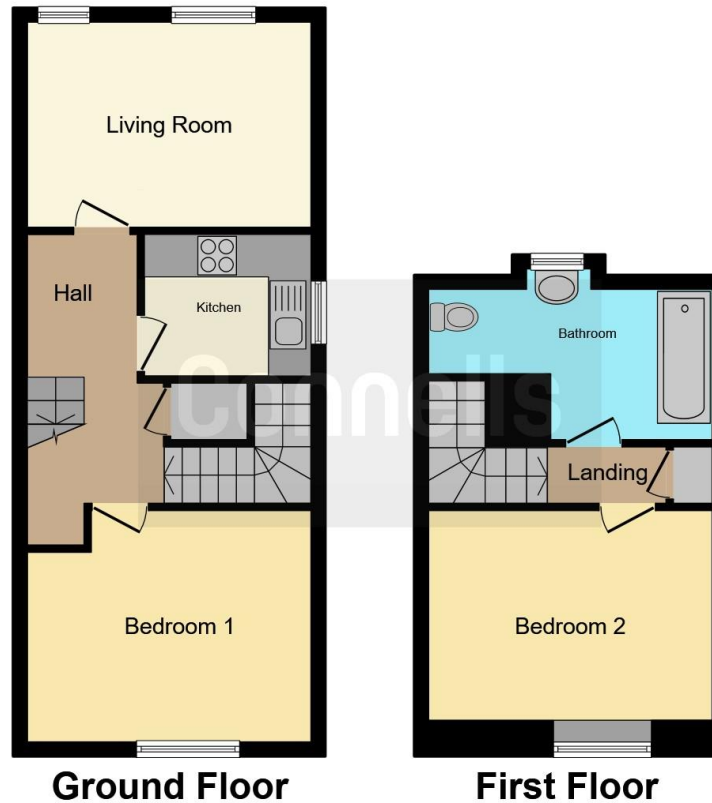
Double glazed eaves window. Fitted suite comprising of bath with shower over, low level WC and hand basin.

Agency Notes

999 years leasehold with 967 years remaining.







This floorplan is for illustrative purposes only and is not drawn to scale. Measurements, floor-areas, openings and orientations are approximate. They should not be relied upon for any purpose and do not form any part of an agreement. No liability is taken for any error or mis-statement. All parties must rely on their own inspections.

To view this property please contact Connells on

T 01908 330751

E oxleypark@connells.co.uk

Unit 10 64 Redgrave Drive Oxley park
MILTON KEYNES MK4 4TB

EPC Rating: D

Tenure: Leasehold

view this property online [connells.co.uk/Property/EXP104384](https://www.connells.co.uk/Property/EXP104384)

This is a Leasehold property. We are awaiting further details about the Term of the lease. For further information please contact the branch. Please note additional fees could be incurred for items such as Leasehold packs.



1. MONEY LAUNDERING REGULATIONS Intending purchasers will be asked to produce identification documentation at a later stage and we would ask for your co-operation in order that there will be no delay in agreeing the sale. 2. These particulars do not constitute part or all of an offer or contract. 3. The measurements indicated are supplied for guidance only and as such must be considered incorrect. Potential buyers are advised to recheck measurements before committing to any expense. 4. We have not tested any apparatus, equipment, fixtures, fittings or services and it is in the buyers interest to check the working condition of any appliances.

Connells Residential is registered in England and Wales under company number 1489613, Registered Office is Cumbria House, 16-20 Hockliffe Street, Leighton Buzzard, Bedfordshire, LU7 1GN. VAT Registration Number is 500 2481 05.

See all our properties at www.connells.co.uk | www.rightmove.co.uk | www.zoopla.co.uk

Property Ref: OXP104384 - 0004