

Kempton Close
Oakley Vale
Corby
NN18 8QY

£340,000

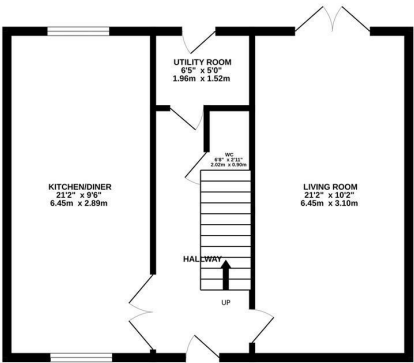


OSCAR JAMES

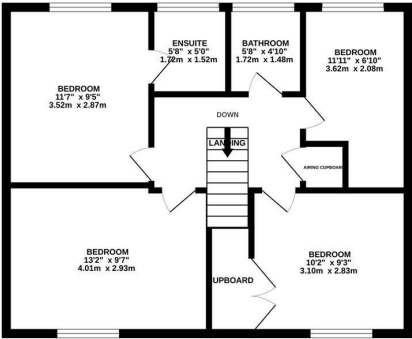
...expect excellence

FLOOR PLANS

GROUND FLOOR
552 sq.ft. (51.3 sq.m.) approx.



1ST FLOOR
552 sq.ft. (51.3 sq.m.) approx.



TOTAL FLOOR AREA : 1104 sq.ft. (102.6 sq.m.) approx.
Whilst every attempt has been made to ensure the accuracy of the floorplan contained here, measurements of doors, windows, rooms and any other items are approximate and no responsibility is taken for any error, omission or mis-statement. This plan is for illustrative purposes only and should be used as such by any prospective purchaser. The services, systems and appliances shown have not been tested and no guarantee as to their operability or efficiency can be given.
Made with Metropix ©2024



AT A GLANCE...



Light and airy lounge



Refurbished Kitchen/Diner.



Four bedrooms.



Family bathroom and en-suite.



Front and rear gardens.



Single garage and parking for 3 vehicles.



WHAT'S GREAT?

Welcome to Kempton Close, Oakley Vale, Corby - a stunning property that offers the perfect blend of space, comfort, and modern living. This detached house boasts 2 large reception rooms, 4 bedrooms, a utility room, downstairs WC and 2 bathrooms, providing ample space for a growing family or those who love to entertain.

Situated in a modern development, this property exudes contemporary charm and style. The spacious reception rooms are perfect for hosting guests or simply relaxing with your loved ones. The 4 bedrooms offer plenty of space for a growing family or can be transformed into a home office or hobby room to suit your needs.

With 3 bathrooms, there will be no more waiting in line during the morning

rush, ensuring convenience and comfort for all residents. The property also features parking for 4 vehicles, making it ideal for families with multiple cars or guests visiting regularly.

Located in the desirable Kempton Close, this property offers a peaceful retreat from the hustle and bustle of daily life while still being conveniently close to local amenities, schools, and transport links.

Don't miss out on the opportunity to make this modern detached house your new home. Book a viewing today and experience the charm and comfort that Kempton Close has to offer.

...expect excellence



SELLER'S SECRET

A wonderful family home in a great neighbourhood!
Time to find some more space for our growing family.



Why we like it....

A great example of a four bedroom family home, located on the desirable Oakley Vale within easy distance of schooling and all amenities.

To buy or not to buy....

OSCAR JAMES

13 New Post Office Square | Corby | NN17
1PB

01536 400900

www.oscar-james.com