

9 Oundle Road
Weldon
Corby
NN17 3JR

£650,000



OSCAR JAMES

...expect excellence



WHAT'S GREAT?

"The Old Bakehouse, your DREAM HOME"

NO ONWARD CHAIN.

Welcome to this amazing, charming, period, Grade II Listed house located on Oundle Road in the picturesque Northamptonshire Village of Weldon.

This property boasts four spacious bedrooms and three modern bathrooms, providing ample space for a growing family or those who love to entertain guests.

This is a wonderful example of a stone built, period property, far too amazing to fully describe here, as this is a must see home.

As you step inside, you'll be greeted by a delightful lobby that leads to four inviting reception rooms that offer versatility and comfort. Whether you fancy a cosy night in by the fireplace or hosting a dinner party with friends, this property caters to all your needs.

This home has retained all its ambiance of the numerous period features combined with a modern contemporary twist.

An ample rear garden continues the theme of this delightful property, social areas, patio and lawn complete this wonderful outside space.

Located in a tranquil neighbourhood, this house offers a perfect blend of suburban serenity and modern living. With easy access to local amenities, schools, and green spaces, you'll find everything you need just a stone's throw away.

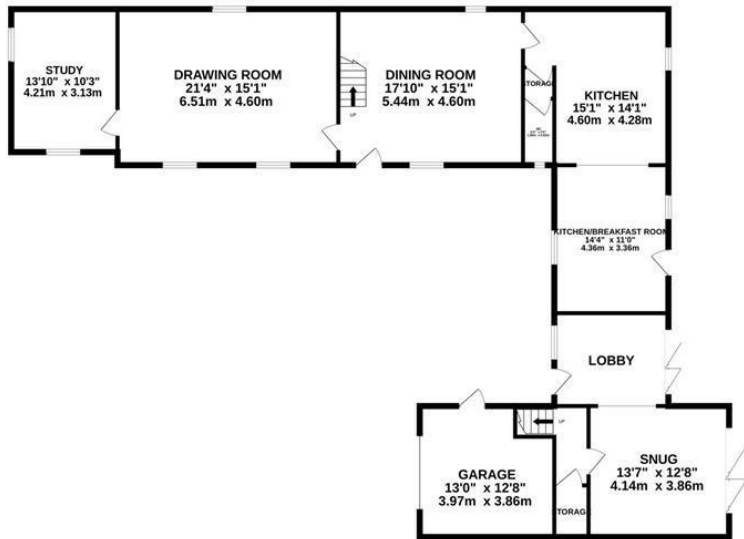
One of the standout features of this home is the parking provision for up to five vehicles, ensuring convenience for you and your guests. Say goodbye to the hassle of searching for parking spaces - you'll have plenty of room right at your doorstep.

Don't miss the opportunity to make this house your home. Book a viewing today and discover the endless possibilities that await you at this delightful property on Oundle Road.

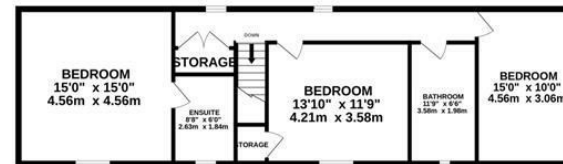
...expect excellence

Floor Plan

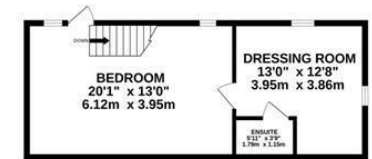
GROUND FLOOR
1581 sq.ft. (146.9 sq.m.) approx.



1ST FLOOR
814 sq.ft. (75.6 sq.m.) approx.



2ND FLOOR
425 sq.ft. (39.4 sq.m.) approx.



TOTAL FLOOR AREA : 2820 sq.ft. (262.0 sq.m.) approx.


Whilst every attempt has been made to ensure the accuracy of the floorplan contained here, measurements of doors, windows, rooms and any other items are approximate and no responsibility is taken for any error, omission or mis-statement. This plan is for illustrative purposes only and should be used as such by any prospective purchaser. The services, systems and appliances shown have not been tested and no guarantee as to their operability or efficiency can be given.


Made with Metropix ©2024





AT A GLANCE...


 Wonderful Lounge.

 Large open plan Kitchen.

 Four Bedrooms

 Numerous bathrooms

 Great gardens

 Garage and parking for numerous vehicles.





SELLER'S SECRET

An amazing family home that we have loved intensely, only a move due to a work relocation could drag us a way from this property.



Why we like it....

What an Amazing picture perfect property. Unusually large for a period residence and the perfect family setting.

To buy or not to buy....

OSCAR JAMES

13 New Post Office Square | Corby | NN17
1PB
01536 400900
www.oscar-james.com
