

10 Lake Drive
Priors Hall Park
Weldon
NN17 3FE

£650,000



OSCAR JAMES

...expect excellence



WHAT'S GREAT?

Location Location Location!

Oscar James are Delighted to welcome to the market, this exceptional FOUR bedroom DETACHED residence on the highly desirable LAKE DRIVE, located within the Willowhurst development at Priors Hall Park.

Constructed by renowned builder Francis Jackson, this well-appointed and spacious family home is carefully designed, with attention to both practicality and aesthetics.

The presence of a reception hall, cloakroom/WC, and a generously sized living room with French doors leading to the south facing rear garden creates a focus on comfort and convenience. The inclusion of a study and a separate utility room adds to the functionality of the space.

The kitchen/dining room is an absolute highlight, offering ample room for both cooking and dining, along with integrated appliances and a central island. This area serves as a hub for family gatherings and entertaining.

Upstairs, the galleried style landing adds a touch of elegance, while the en-suite facilities and fitted wardrobes in the master and guest bedrooms provide a luxurious touch. The additional bedrooms and family bathroom offer practicality for family living.

To add practicality and a flexibility, the upper level of the garage has recently been converted to create an open plan office/Lounge/cinema room. Independently accessed from the south facing garden, this is an exceptional addition to the home.

The potential for additional living accommodation in the fully boarded loft space adds further value and versatility to the property.

The property's exterior is very impressive, positioned on an excellent sized plot, displaying an attractive frontage, driveway for several vehicles and a double garage.

Overall, this wonderful family home encompasses a blend of comfort, style, and practicality, complemented by its desirable location and attractive outdoor space.

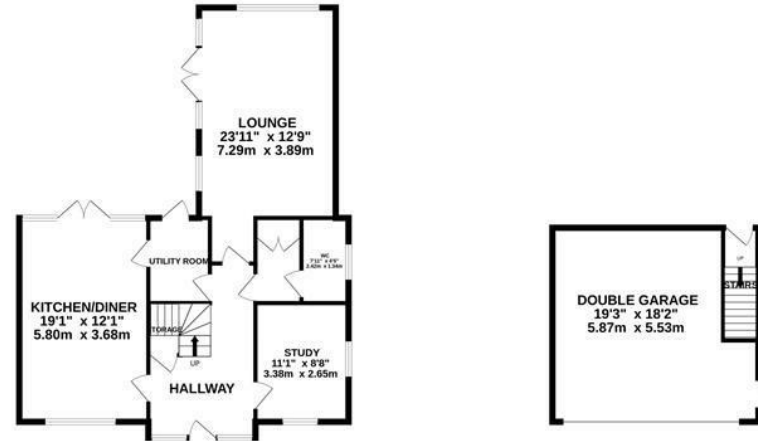
As you would expect, from it's name, Lake Drive is set adjacent to a body of water that is abundant with wildlife.

A MUST VIEW

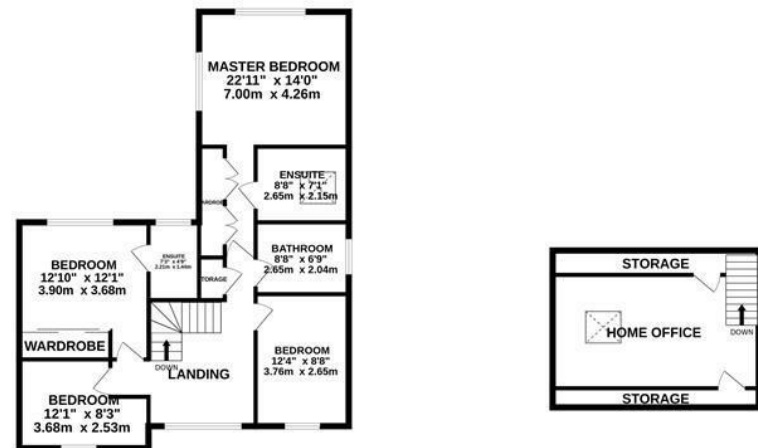
...expect excellence

Floor Plan

GROUND FLOOR
1201 sq.ft. (111.6 sq.m.) approx.



1ST FLOOR
1167 sq.ft. (108.5 sq.m.) approx.



TOTAL FLOOR AREA: 2368 sq.ft. (220.0 sq.m.) approx.

Whilst every attempt has been made to ensure the accuracy of the floorplan contained here, measurements of doors, windows, rooms and any other items are approximate and no responsibility is taken for any error, omission or mis-statement. This plan is for illustrative purposes only and should be used as such by any prospective purchaser. The services, systems and appliances shown have not been tested and no guarantee as to their operability or efficiency can be given.
Made with Metropix ©2024



AT A GLANCE...



Large living room located to the rear is full of natural light and finished with log burner



Immaculate kitchen-diner, offers ample storage and high range built in Neff appliances



Four sizeable bedrooms, two of which with ensuite shower rooms



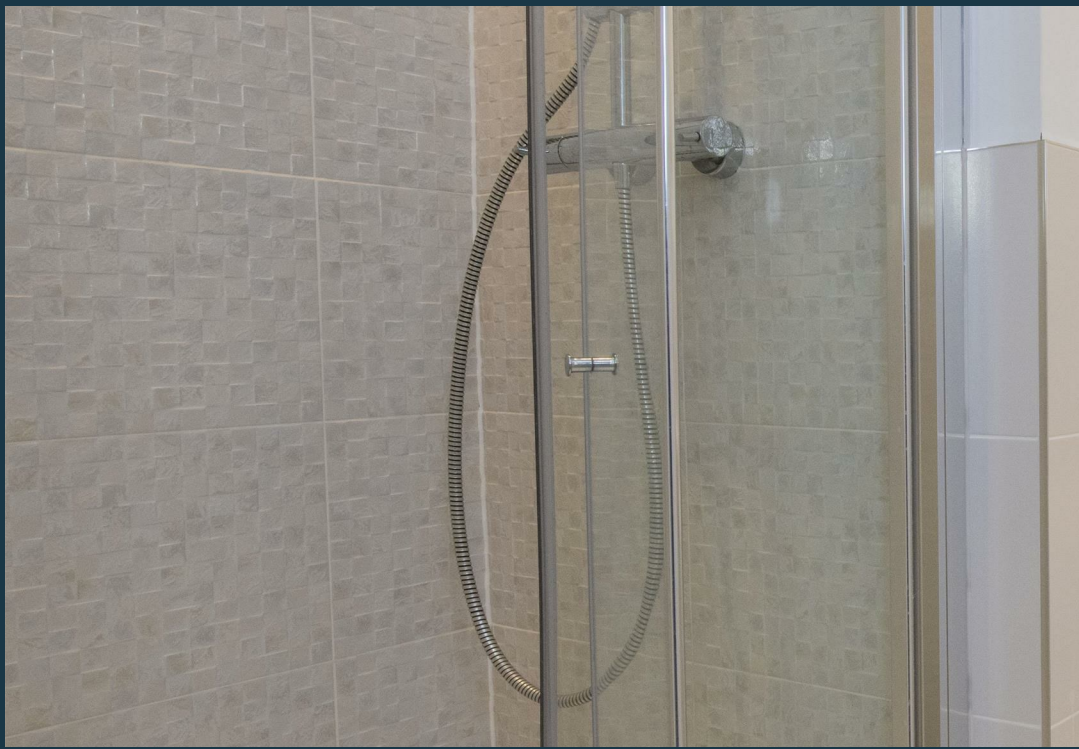
Modern family bathroom featuring both bath tub and double shower



A Southwardly facing, beautifully landscaped rear garden- great for entertaining with guests



Plentiful off-road parking via driveway and double detached garage which is part converted





SELLER'S SECRET

A wonderful home that we have enjoyed over the years, we hope the new owners enjoy both the surrounding and aesthetics as we have done.



Why we like it....

As always, an exceptional location and wonderfully constructed family Home. Francis Jackson developments never cease to impress! The lake location is impressive and give the feel of a rural setting placed alongside amenities.

To buy or not to buy....

OSCAR JAMES

13 New Post Office Square | Corby | NN17
1PB
01536 400900
www.oscar-james.com
