

The Piggery Bulwick Road  
Southwick  
Oundle  
PE8 5BP

£800,000



OSCAR JAMES

...expect excellence



# WHAT'S GREAT?

Oscar James Welcomes You to a Contemporary Masterpiece set in rural tranquility.

Step into a world of unparalleled design and sophistication with this exceptional five-bedroom residence proudly offered to the market by Oscar James.

Nestled on 0.5 acres amidst picturesque countryside vistas, this modern marvel is a testament to luxurious living.

Every facet of this home exudes spaciousness, quality craftsmanship, and an abundance of natural light. Crafted by its current owners with a focus on family living, no detail has been spared in creating the ultimate sanctuary.

Located just moments from Southwick village yet enveloped in tranquil rural surroundings, this property offers a perfect blend of convenience and seclusion. Boasting five generous double bedrooms, including one to the ground floor with its own en-suite, it caters effortlessly to the needs of a growing family.

At the heart of the home lies the magnificent kitchen/family, social room, a space designed for seamless indoor-outdoor living. With bi-fold doors inviting the outside in, this expansive area is bathed in light, offering a perfect setting for both relaxation and entertainment. The contemporary kitchen leaves nothing to be desired, meticulously fitted with top-of-the-line amenities to inspire culinary creativity.

In addition to the FIVE bedrooms, the property features a gym, snug, double office and multiple luxurious bathrooms, all thoughtfully integrated into its modern design. To truly appreciate the grandeur and scale of this executive home, we invite you to browse through our portfolio of photographs before you embark on a personalized video tour and then schedule a viewing.

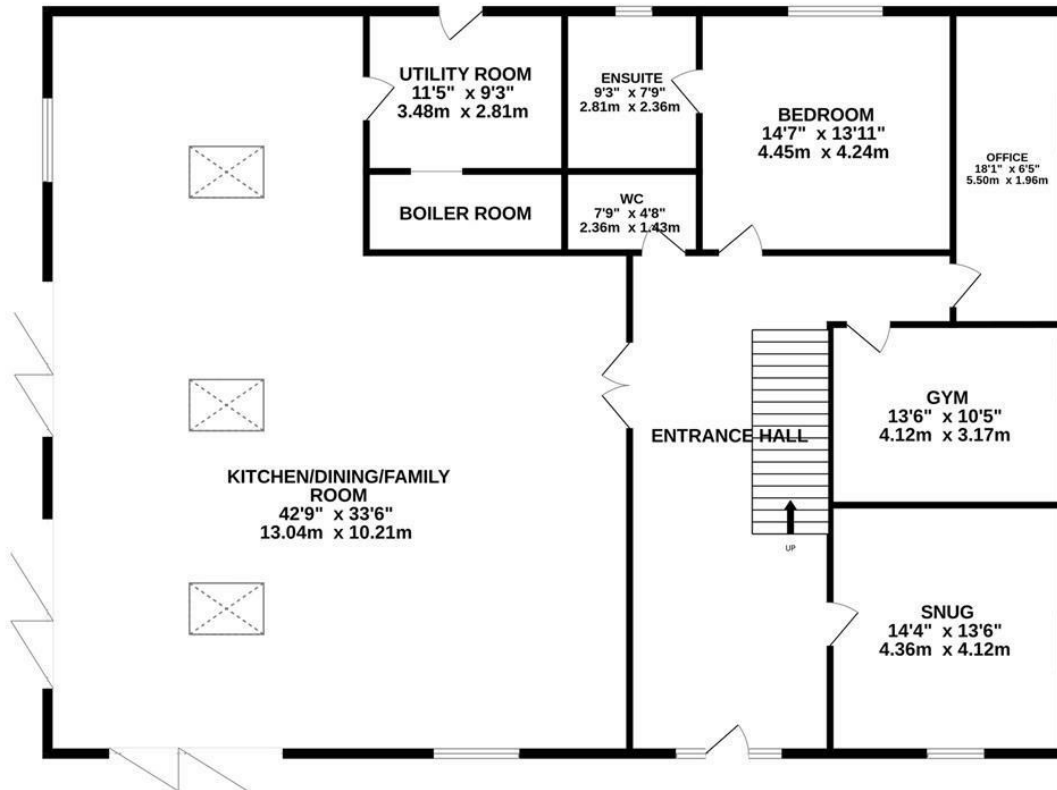
Prepare to be captivated by the unparalleled elegance and charm that awaits within.

The functionality of the home is replicated externally offering scope for landscaping to create an oasis of modern living.

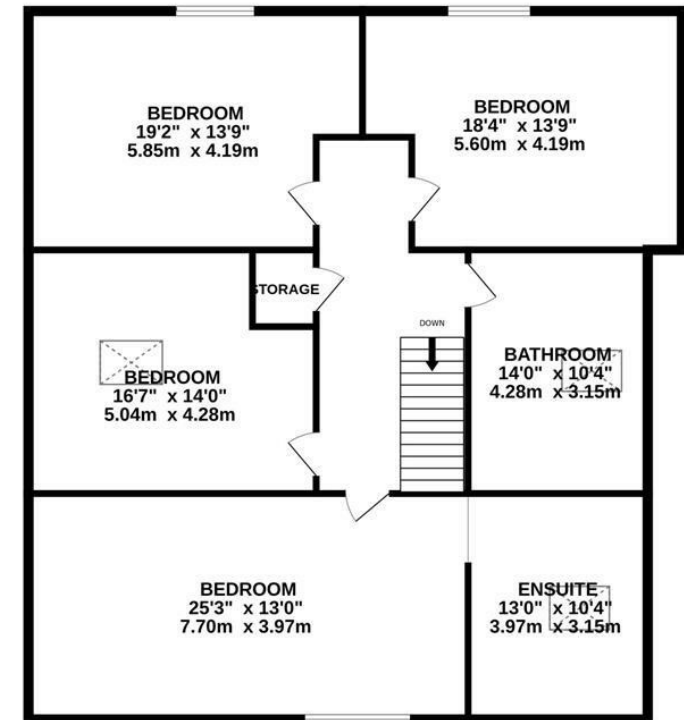
...expect excellence

# Floor Plan

GROUND FLOOR  
2503 sq.ft. (232.5 sq.m.) approx.



1ST FLOOR  
1480 sq.ft. (137.5 sq.m.) approx.



TOTAL FLOOR AREA : 3982 sq.ft. (370.0 sq.m.) approx.

Whilst every attempt has been made to ensure the accuracy of the floorplan contained here, measurements of doors, windows, rooms and any other items are approximate and no responsibility is taken for any error, omission or mis-statement. This plan is for illustrative purposes only and should be used as such by any prospective purchaser. The services, systems and appliances shown have not been tested and no guarantee as to their operability or efficiency can be given.

Made with Metropix ©2024



## AT A GLANCE...



Cozy Lounge



Immense social  
Kitchen/diner/family room.



Five Double bedrooms



Multiple bathrooms.



Half an Acre.



Parking for multiple vehicles.





# SELLER'S SECRET

Our home was designed with no compromise, we have loved every minute of our journey here.



*Why we like it....*

A true gem, amazing design and setting, this home will deliver on all your requirements.

## OSCAR JAMES

13 New Post Office Square | Corby | NN17  
1PB  
01536 400900  
[www.oscar-james.com](http://www.oscar-james.com)

*To buy or not to buy....*

---

---

---

---

---