



Offers in the region of £ 5.750.000,--

Prime Oxfordshire building plot of 59.6 acres to create 33.000 square feet mansion and outbuildings



THE COTSWOLD PROPERTY SHOP



NORTH EAST ELEVATION

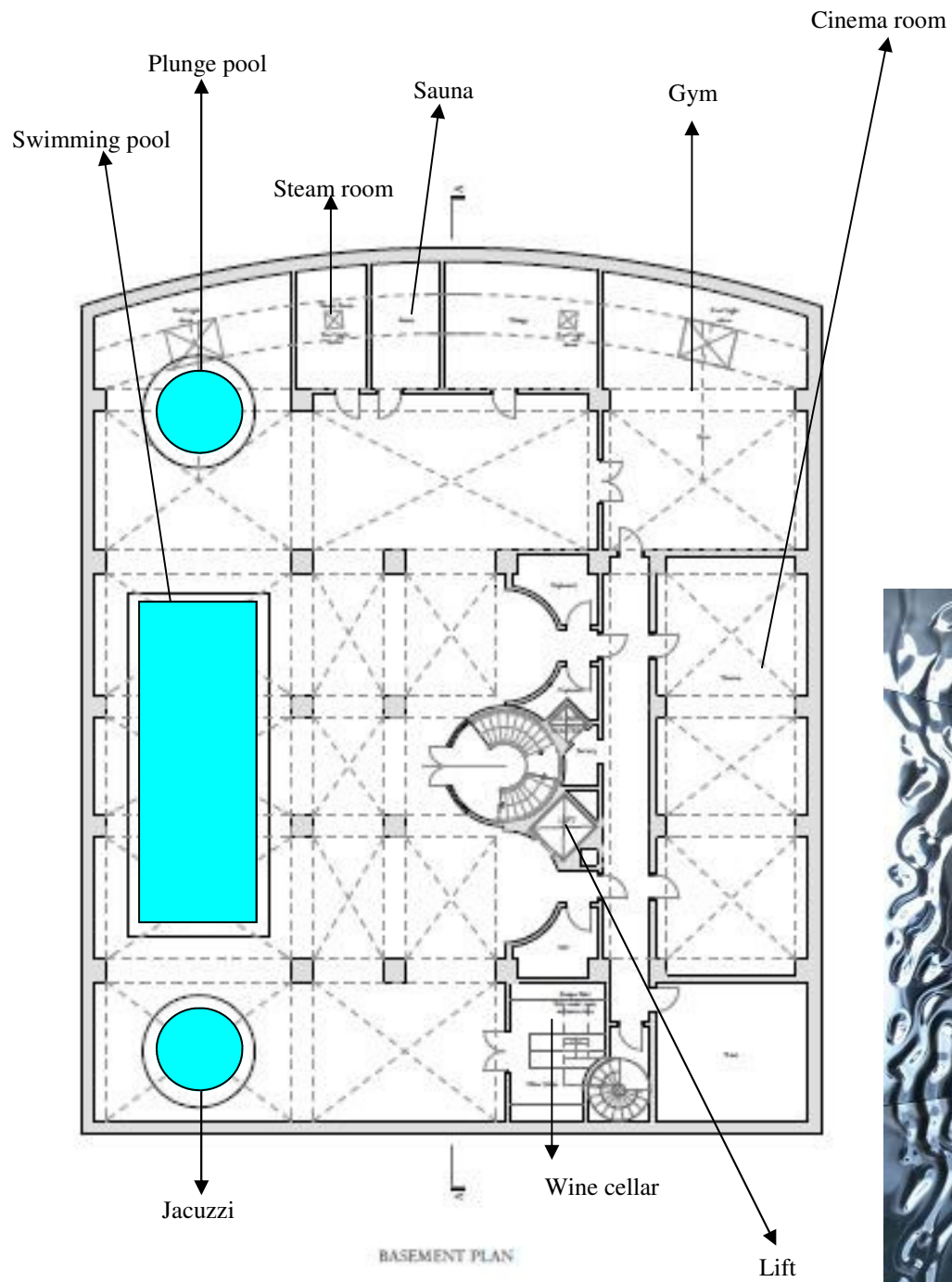


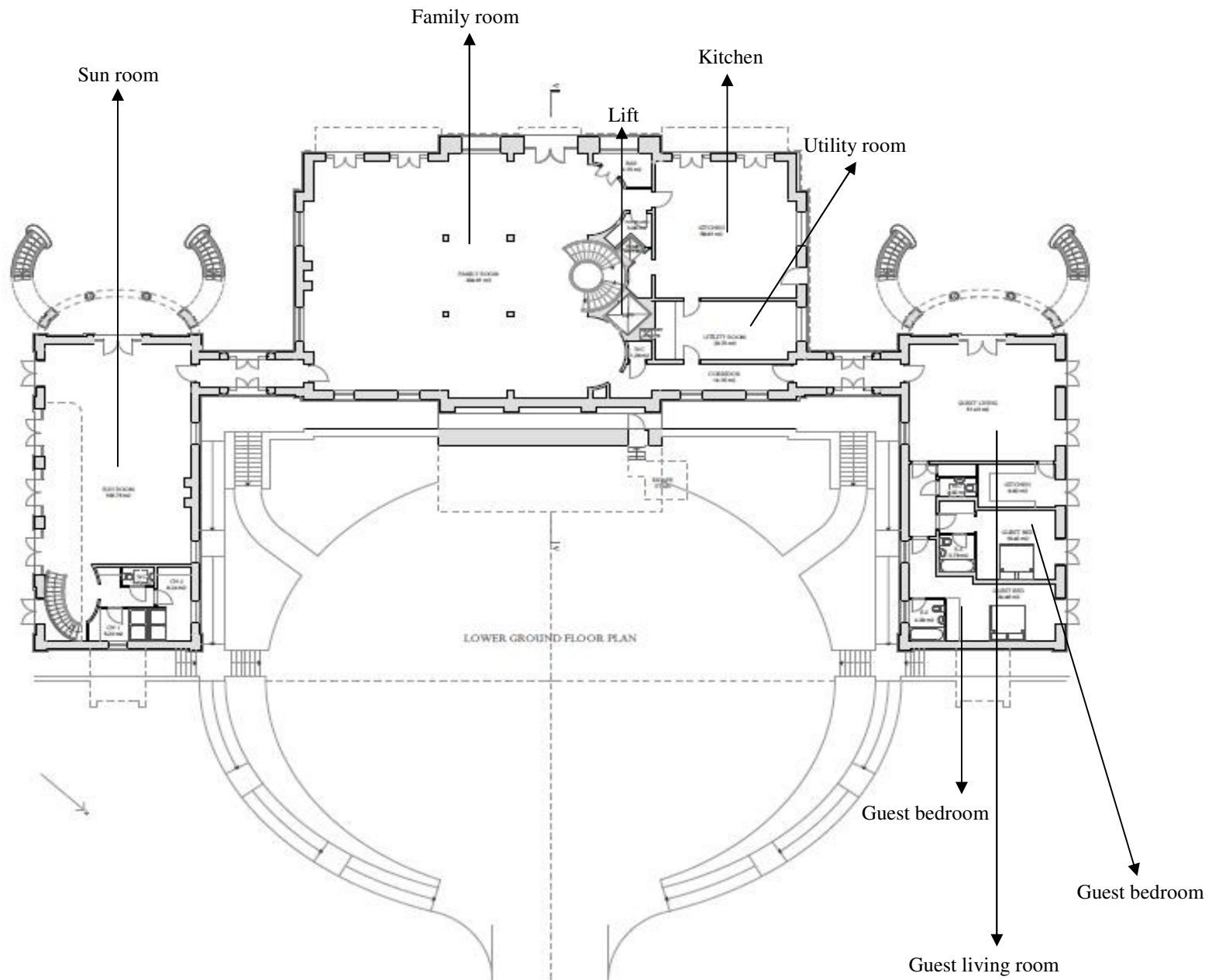
SOUTH WEST ELEVATION

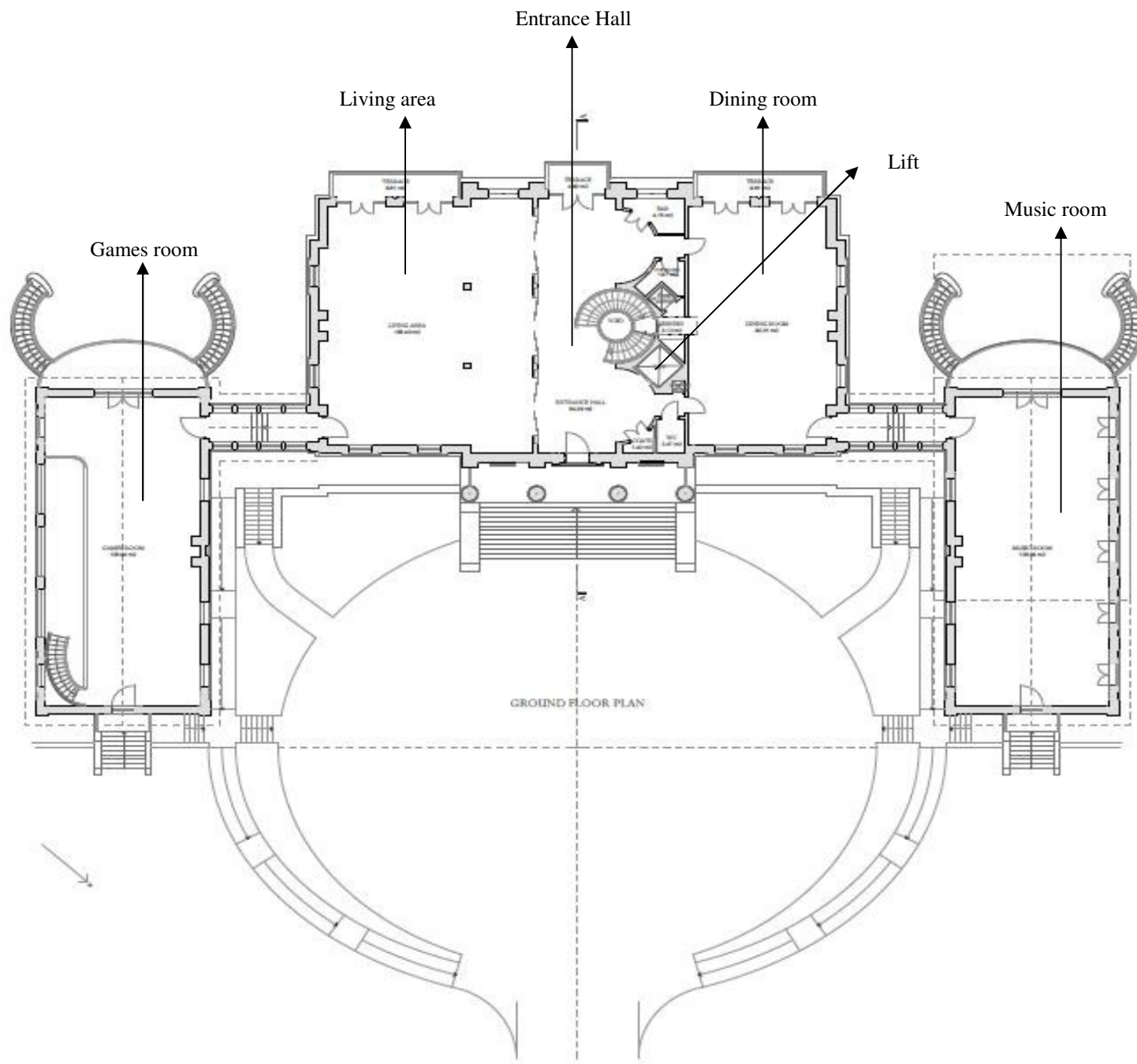


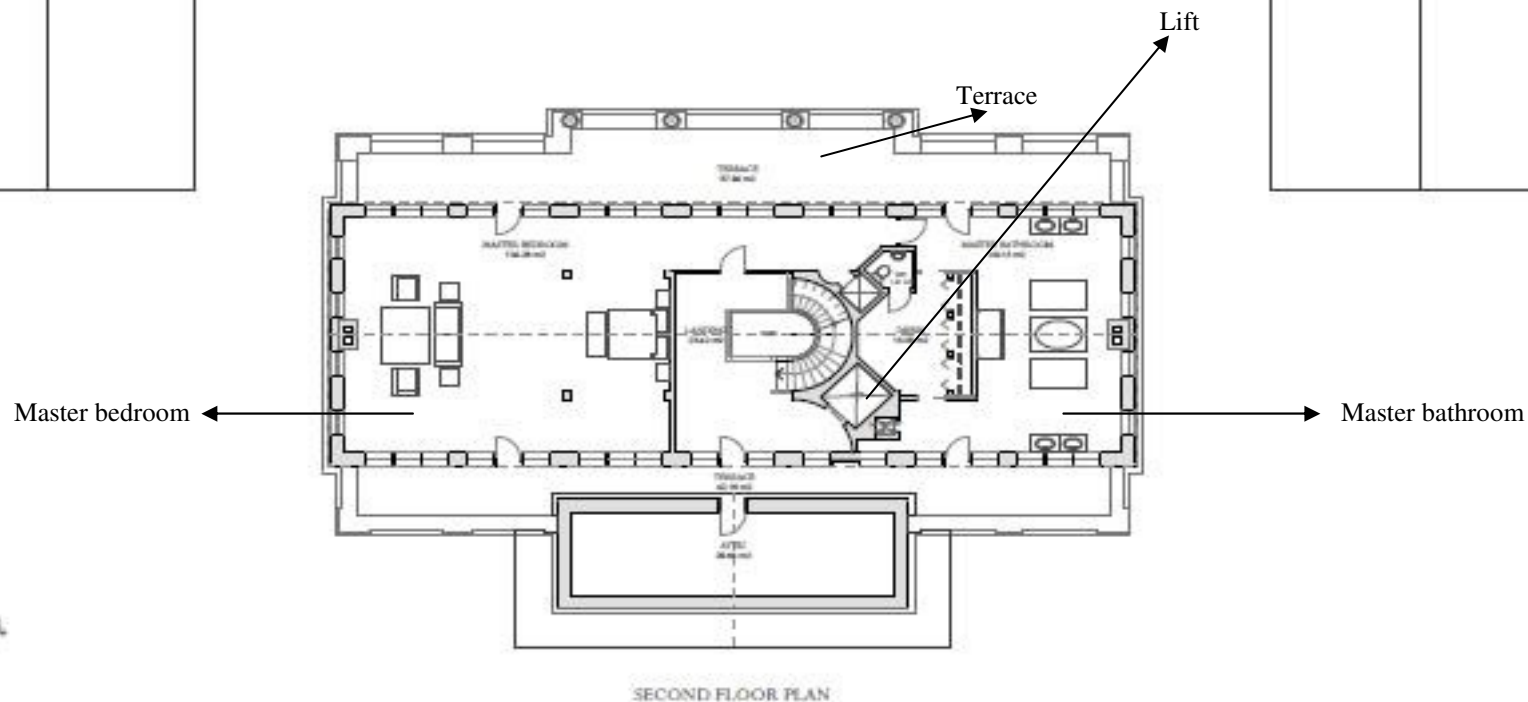
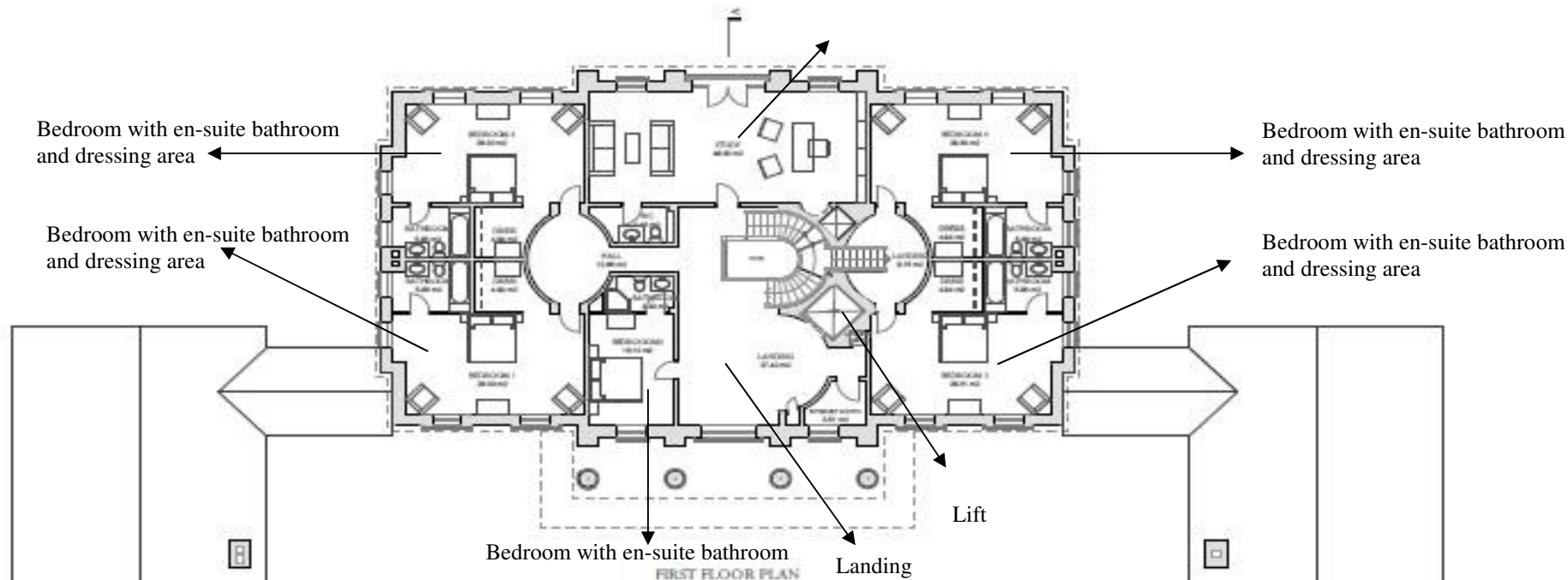
-
- nis Court
 ter garden
 anese garden
 race walk
 ter garden
 ing garden
 age
 led terrace garden
 uryard
 ret garden

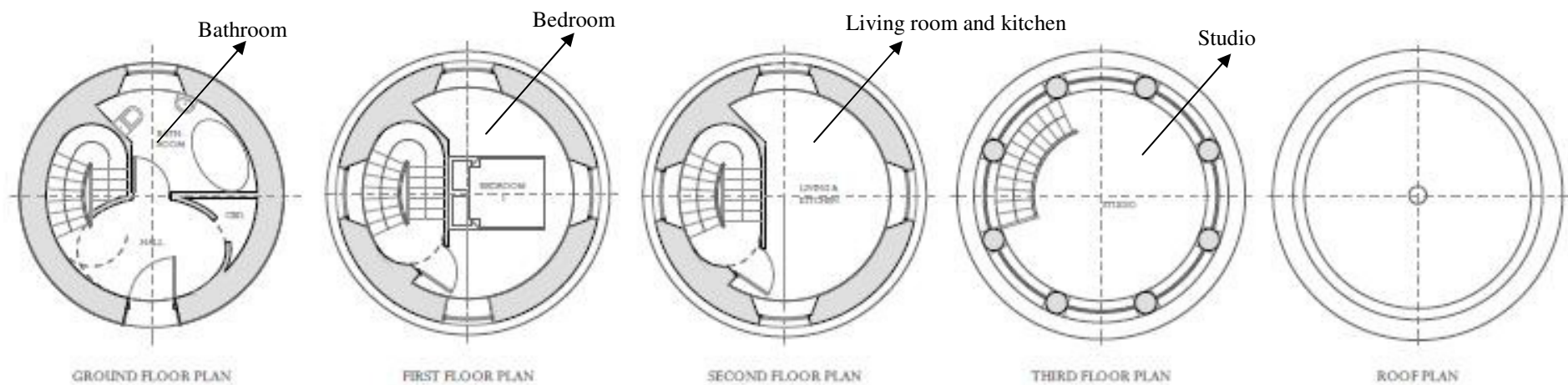
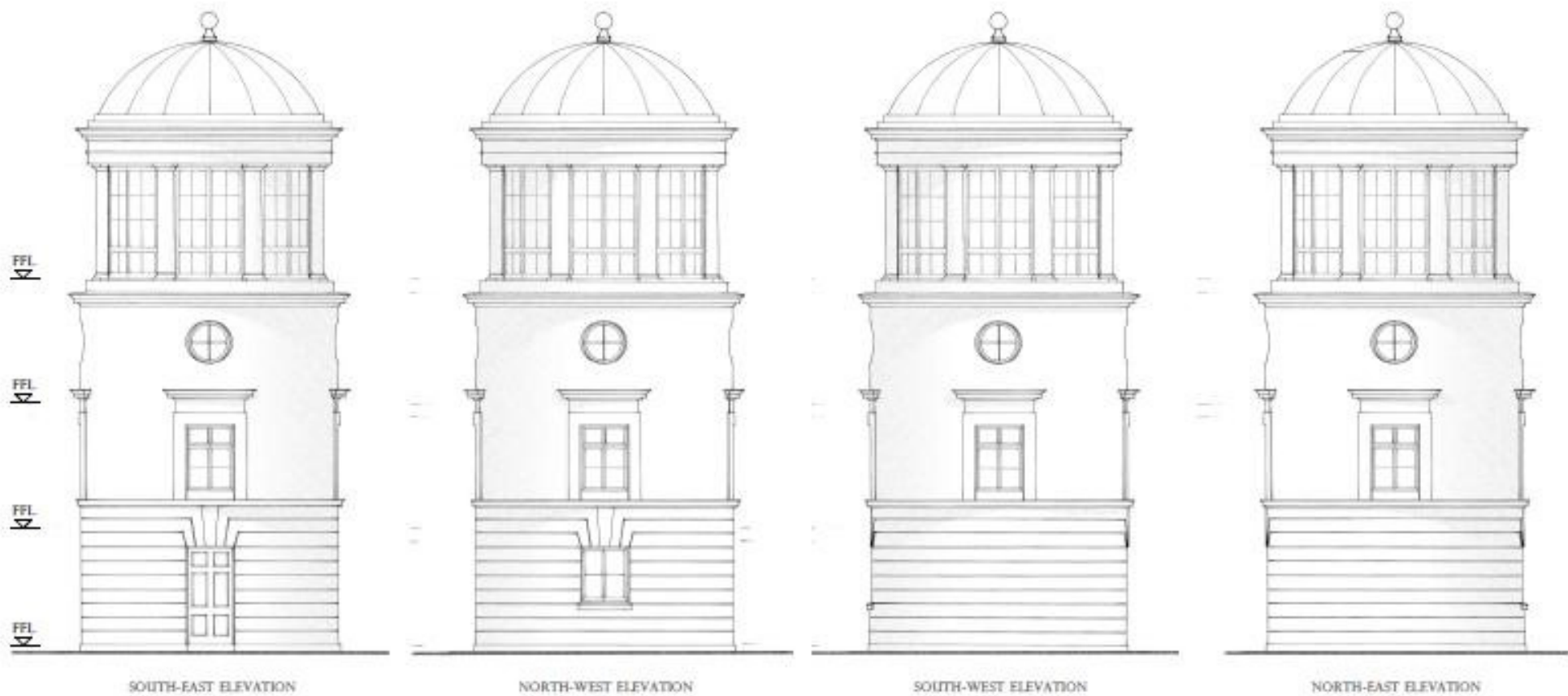


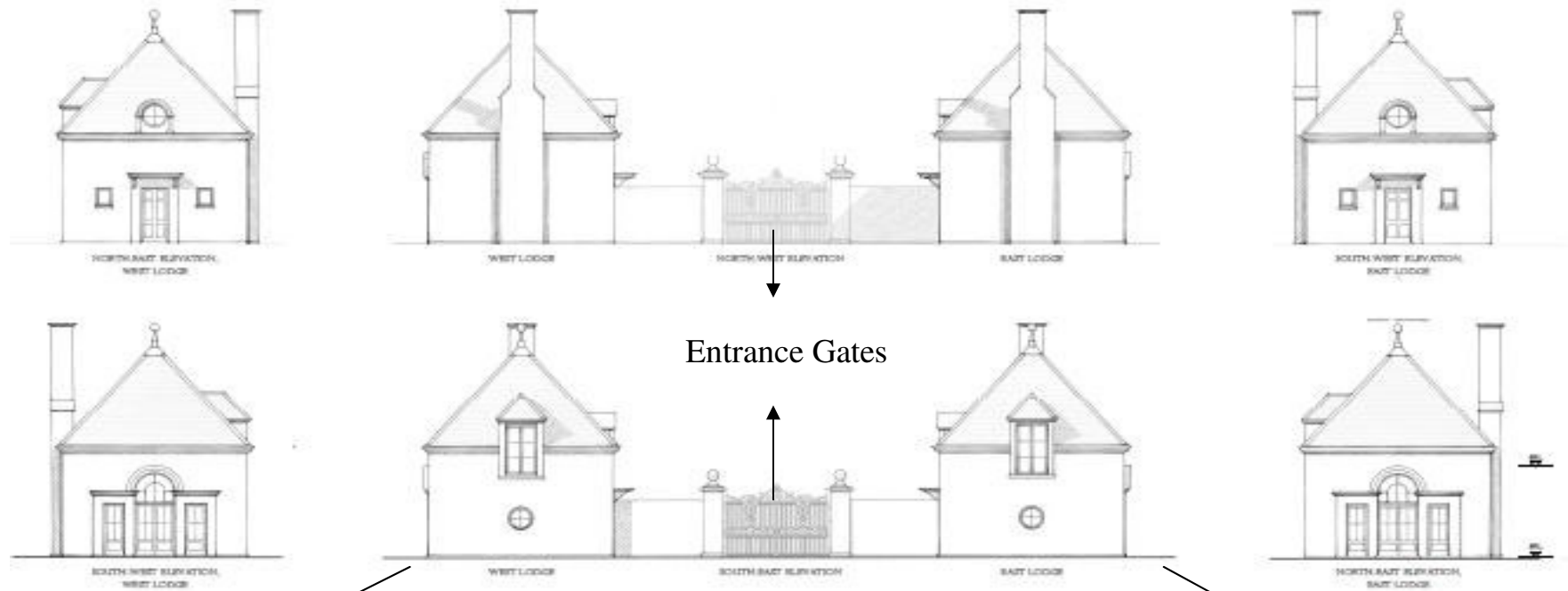












Gate House 1

Gate House 2



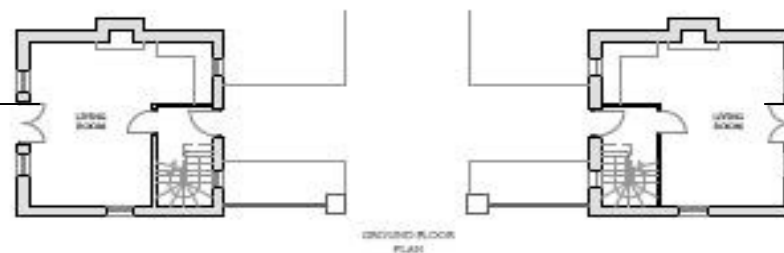
Bedroom with en-suite bathroom

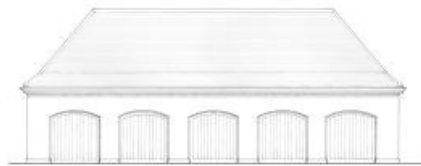
Bedroom with en-suite bathroom



Living room with kitchen

Living room with kitchen





SOUTH WEST ELEVATION



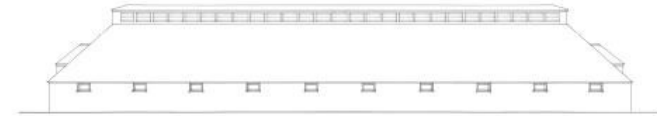
NORTHWEST ELEVATION



NORTH EAST ELEVATION



SOUTH EAST ELEVATION



NORTH ELEVATION



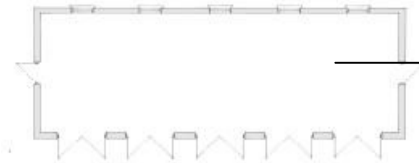
WEST ELEVATION



SOUTH ELEVATION

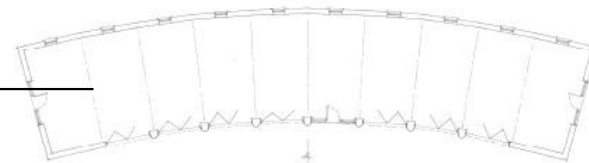


EAST ELEVATION



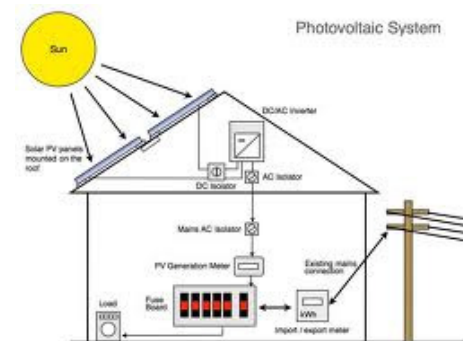
GARAGE PLAN

5 bay garage



SERVICE BARN PLAN

Service barn



THE COTSWOLD PROPERTY SHOP

Key Features

33.000 square feet featuring main house and outbuildings

Indoor Swimming Pool

Indoor Cinema room

Gym

Wine cellar

Indoor Lift

Outdoor Tennis court

5 bay Garage

2 Gate houses with 1 bedroom private accommodation each

Gazebo provides Bedroom / Bathroom / Living room / Kitchen & Studio

6 bedrooms (5 en-suite including walk in wardrobes)

Landscaped gardens

The entire estate could be enclosed by a wall for optimum security

Contact Joost Barnas at The Cotswold Property Shop

01993 708 300 / 07716764684 / jb@cotswoldproperty.org

Please note that all photos are for illustration purposes only. The floor plans are for guidance only and do not form part of any contract.



NORTH EAST ELEVATION

