



ST. GEORGES SQUARE
PIMLICO

JACKSON-STOPS 

ST. GEORGES SQUARE PIMLICO, SW1V

ASKING PRICE: £1,000,000

A beautifully decorated two bedroom property with views over St George's Square is presented to the market in Pimlico, SW1.

This generously proportioned two double bedroom apartment is set within an elegant stucco-fronted building, overlooking the prestigious St George's Square. Ideally positioned for the excellent transport links of Pimlico Underground Station and the array of local shops, cafés and amenities on Moreton Street, Lupus Street and Tachbrook Street.

Located on the second floor with the benefit of a lift, the apartment features a lovely eat-in kitchen with plenty of built-in storage. The spacious reception room (c. 300 sq ft) provides ample room for both relaxing and more formal dining, as well as excellent views across the Square.

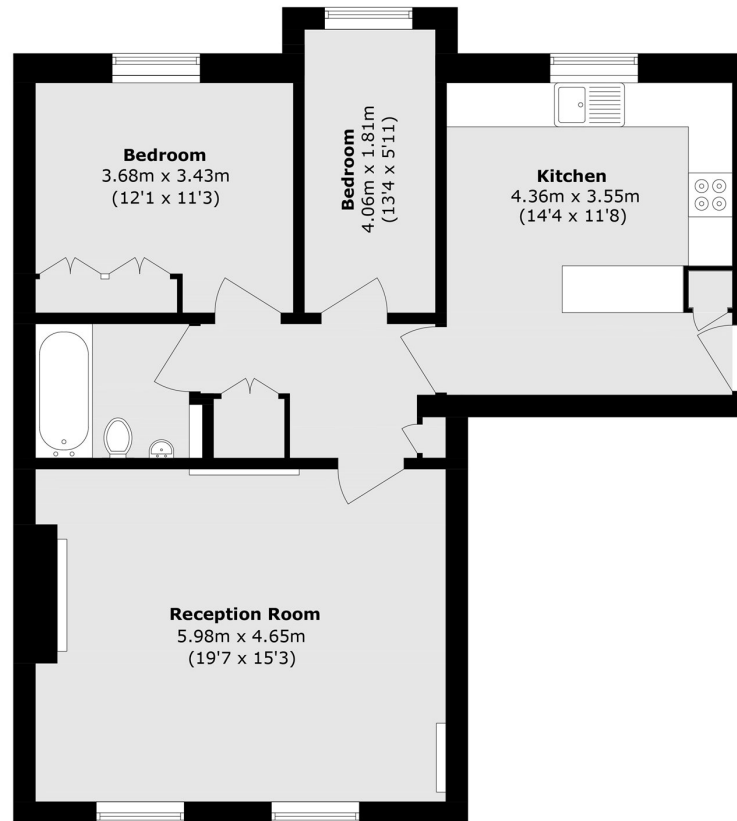
This is a superb opportunity to acquire a beautifully appointed home in one of Pimlico's premier locations. It would make an ideal central London residence, pied-à-terre or long-term rental investment.

KEY FEATURES

- Share Of Freehold
- Second Floor (Lift)
- Two Bedrooms
- Service Charge: £6700 pa
- Grade II Listed
- Sole Agent







Second Floor

Total area (approx.): 74.4 sq. m (800.8 sq. ft)

Energy Rating: C. We aim to make our particulars both accurate and reliable. However they are not guaranteed; nor do they form part of an offer or contract. If you require clarification on any points then please contact us, especially if you are travelling some distance to view. Please note that appliances and heating systems have not been tested and therefore no warranties can be given as to their good working order.

ASKING PRICE: £1,000,000

PIMLICO

020 7828 4050

pimlicosales@jackson-stops.com

jackson-stops.co.uk

JACKSON-STOPS 