



ST. GEORGES DRIVE
PIMLICO

JACKSON-STOPS 

ST. GEORGES DRIVE PIMLICO, SW1V

ASKING PRICE: £634 PER WEEK

A two bedroom, lower ground floor, flat in the heart of Pimlico.

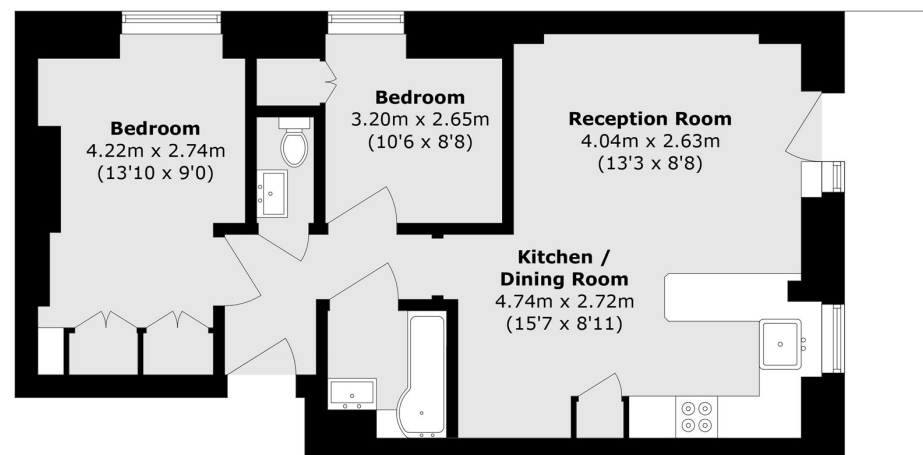
Offering good living and entertaining space. Heating and hot water included in the rent. Just 0.4 miles from Pimlico Underground Station, 0.6 miles from Victoria Station, 0.8 miles from Sloane Square Underground Station and 0.7 miles from Battersea Park.



KEY FEATURES

- Two Bedrooms
- Two Bathrooms
- Reception
- Kitchen
- Bathroom
- Tax Band: F





Total area (approx.): 51.3 sq. m (552.1 sq. ft)

Energy Rating: E. We aim to make our particulars both accurate and reliable. However they are not guaranteed; nor do they form part of an offer or contract. If you require clarification on any points then please contact us, especially if you are travelling some distance to view. Please note that appliances and heating systems have not been tested and therefore no warranties can be given as to their good working order.

ASKING PRICE: £634 PER WEEK

PIMLICO

020 7828 4243

pimlicolettings@jackson-stops.com

jackson-stops.co.uk

JACKSON-STOPS 