



**GROSVENOR ROAD**  
PIMLICO

**JACKSON-STOPS** 



## GROSVENOR ROAD PIMLICO, SW1V

ASKING PRICE: £1,295,000

A bright two double bedroom, two bathroom third floor apartment with parking, panoramic river views and concierge is offered to the market in Pimlico, SW1.

Belvedere House is a private purpose built development on the banks of the River Thames in Pimlico, SW1. Residents benefit from 24 hour security and concierge service, as well as secure underground parking in which this flat has one designated space, as well as an additional storage unit.

Measuring in the region of 1090 sqft, the apartment has a well-proportioned reception room with dining area, separate kitchen and balcony all river facing. The master bedroom (again river facing) has an en-suite bathroom, as does the second double bedroom. There is also an additional guest loo.

Nearby Transport links include Pimlico underground 0.4 miles, Victoria mainline Station 0.8 miles (incl. Gatwick Express), Sloane Square 1.2 miles and Waterloo 1.9 miles. The number 24 bus can also be found on Claverton street, only 3 mins walk away.

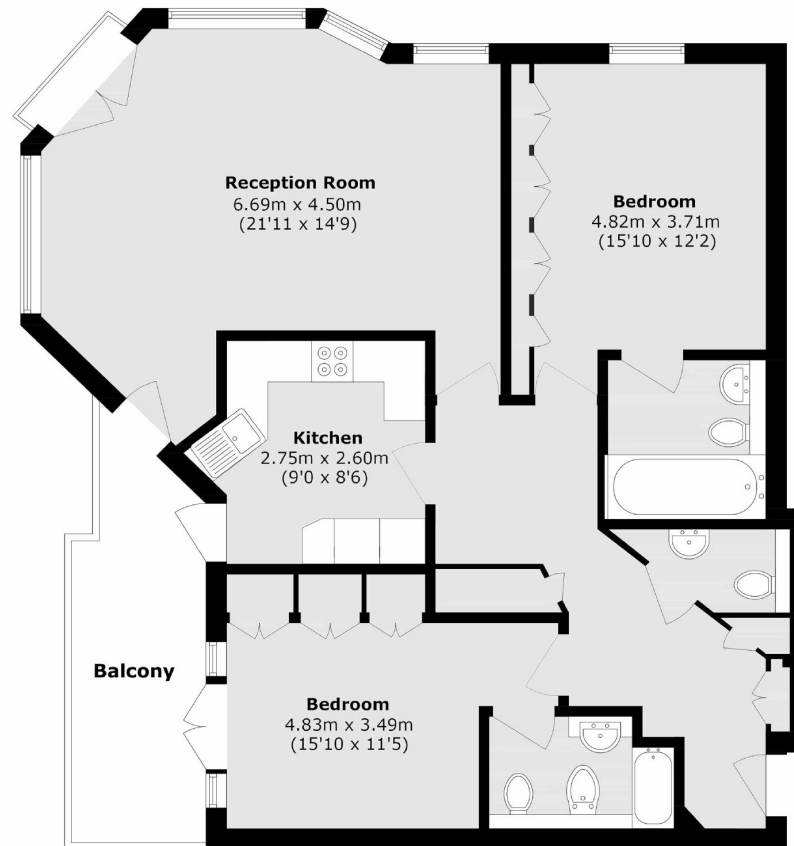
### KEY FEATURES

- Share of Freehold
- 24 Hour Concierge
- Underground Parking
- Balcony
- Service Charge: c. £9500 pa
- Sole Agent









### Third Floor

Total area (approx.): 101.4 sq. m (1091.4 sq. ft)

Balcony area (approx.): 10.7 sq. m (115.1 sq. ft)

Energy Rating: C. We aim to make our particulars both accurate and reliable. However they are not guaranteed; nor do they form part of an offer or contract. If you require clarification on any points then please contact us, especially if you are travelling some distance to view. Please note that appliances and heating systems have not been tested and therefore no warranties can be given as to their good working order.

**ASKING PRICE: £1,295,000**

**PIMLICO**

**020 7828 4050**

pimlicosales@jackson-stops.com

jackson-stops.co.uk

**JACKSON-STOPS** 