



GLOUCESTER STREET
PIMLICO

JACKSON-STOPS 

GLOUCESTER STREET PIMLICO, SW1V

ASKING PRICE: £650 PER WEEK

Bright one-bedroom flat in the heart of the Pimlico Grid, featuring wooden floors, ample storage, and an open-plan kitchen.

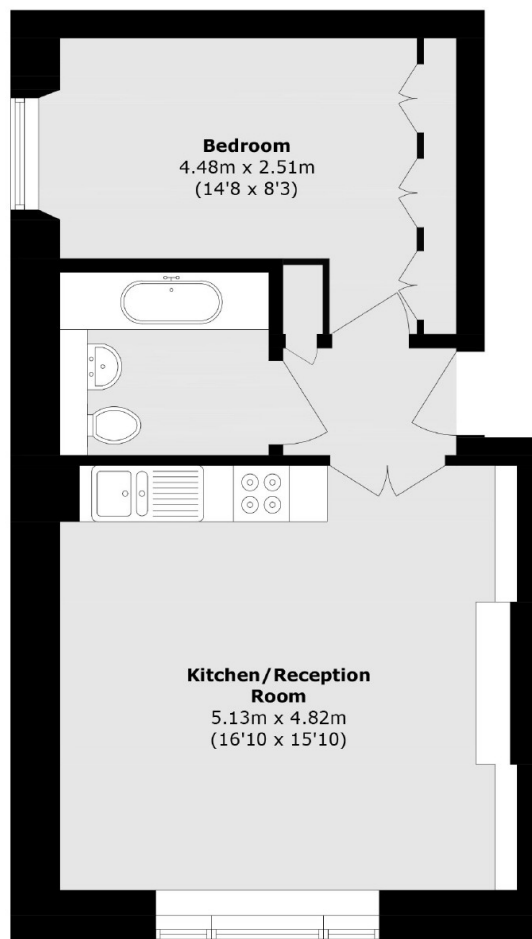
Just 0.4 miles from Pimlico Underground Station, 0.7 miles from Victoria Station, 0.8 miles from Sloane Square Underground Station and 0.6 miles from Battersea Park.

KEY FEATURES

- Double Bedroom
- Reception Room
- Kitchen
- Wooden Floors
- Natural Light
- Tax Band: E







Total area (approx.): 45.2 sq. m (486.5 sq. ft)

Energy Rating: D. We aim to make our particulars both accurate and reliable. However they are not guaranteed; nor do they form part of an offer or contract. If you require clarification on any points then please contact us, especially if you are travelling some distance to view. Please note that appliances and heating systems have not been tested and therefore no warranties can be given as to their good working order.

ASKING PRICE: £650 PER WEEK

PIMLICO

020 7828 4243

pimlicolettings@jackson-stops.com

jackson-stops.co.uk

JACKSON-STOPS 