



CHARLWOOD STREET
PIMLICO

JACKSON-STOPS 

CHARLWOOD STREET PIMLICO, SW1V

ASKING PRICE: £750,000

A lovely two double bedroom, first floor property is presented to the market in Pimlico, SW1 with no onward chain.

Benefiting from not only a portico balcony to the front but also a rear terrace and high ceilings. This would suit all those looking for a first central London home, an extremely convenient pied-a-terre or indeed a long term London investment.

As well as the obvious amenities listed above, the property also benefits from a share in the freehold company, along with a well-run management company and has recently been upgraded to run on an air source heat pump.

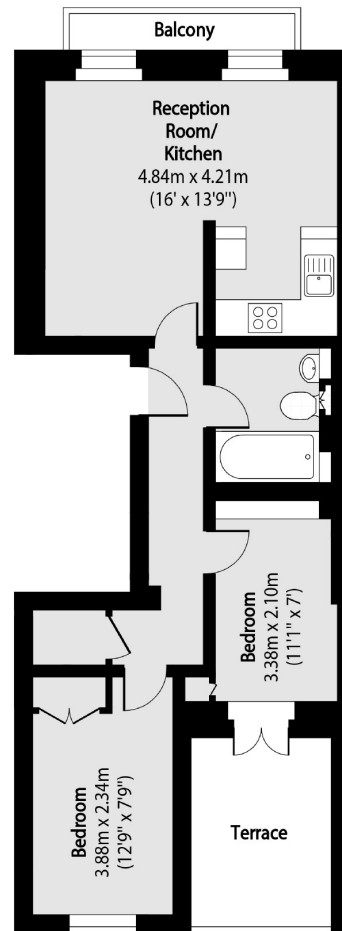
Charlwood street is well located only 0.4 miles from Victoria mainline station making Local, National and International travel equally convenient.

KEY FEATURES

- Share of Freehold
- Two Double Bedrooms
- No Onward Chain
- Air Source Heat Pump
- Balcony + Roof Terrace
- Sole Agent







First Floor

Total area (approx): 49.99 sq m (538 sq. ft)

Terrace total area (approx): 7.13 sq m (76 sq. ft)

Balcony total area (approx): 2.41 sq m (26 sq. ft)

Energy Rating: C. We aim to make our particulars both accurate and reliable. However they are not guaranteed; nor do they form part of an offer or contract. If you require clarification on any points then please contact us, especially if you are travelling some distance to view. Please note that appliances and heating systems have not been tested and therefore no warranties can be given as to their good working order.

ASKING PRICE: £750,000

PIMLICO

020 7828 4050

pimlicosales@jackson-stops.com

jackson-stops.co.uk

JACKSON-STOPS 