



PEABODY AVENUE
PIMLICO

JACKSON-STOPS 

PEABODY AVENUE PIMLICO, SW1V

ASKING PRICE: £475,000

The apartment has plenty of natural light and benefits from a recessed balcony, as well as a lift.

There is a well-proportioned double bedroom with built in storage and a well-designed open plan living room and kitchen.

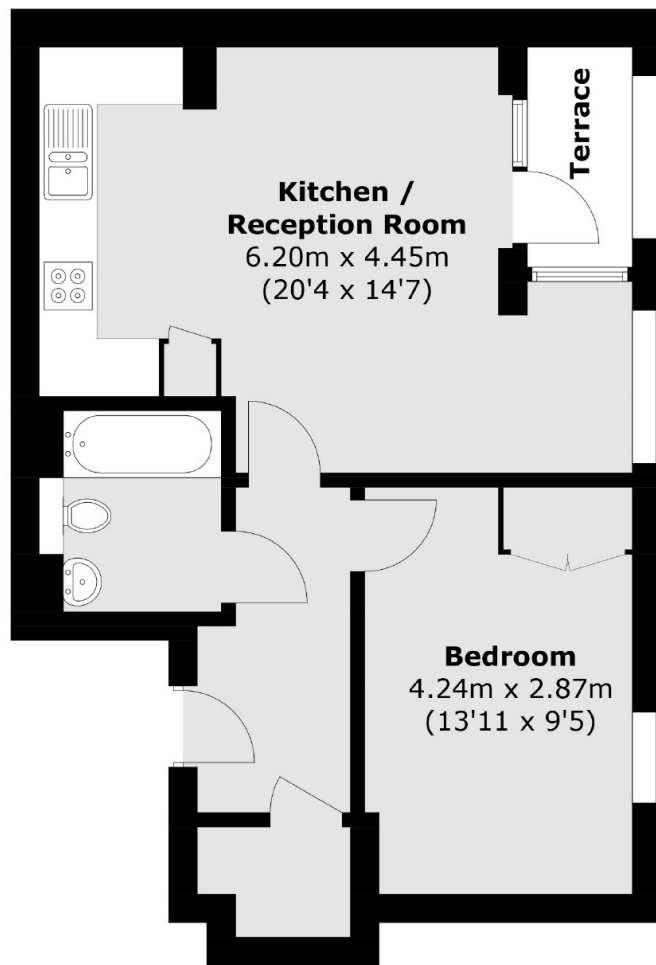
The apartment is well located being only 0.6 miles from both Pimlico Underground and Victoria mainline station. Victoria mainline includes Underground, Overground and the Gatwick Express, making local, national and international travel extremely convenient. It is also worth noting that Sloane Square station leading to the King's Road SW3 is also only 0.8 miles away and the 200 acres of Battersea Park 0.4 miles away. This property would make a superb first time buy, buy to let or central London pied-a-terre.



KEY FEATURES

- Leasehold: 111 Years Left
- Service Charge: £1900 pa
- Balcony
- Lift
- One Bedroom
- Sole Agent





Second Floor

Total area (approx.): 47.5 sq. m (511.2 sq. ft)

Terrace area: 2.5 sq. m (26.9 sq. ft)

Energy Rating: C. We aim to make our particulars both accurate and reliable. However they are not guaranteed; nor do they form part of an offer or contract. If you require clarification on any points then please contact us, especially if you are travelling some distance to view. Please note that appliances and heating systems have not been tested and therefore no warranties can be given as to their good working order.

ASKING PRICE: £475,000

PIMLICO

020 7828 4050

pimlicosales@jackson-stops.com

jackson-stops.co.uk

JACKSON-STOPS 