



ECCLESTON SQUARE
PIMLCO

JACKSON-STOPS 

ECCLESTON SQUARE PIMLCO, SW1V

ASKING PRICE: £695,000

A beautifully decorated ground floor, one bedroom mews apartment is presented to the market in Eccleston Square, SW1.

The property has the unusual benefit of an entrance at the both the front (Eccleston Square) and from the rear via Hugh Mews as well as a demised roof terrace leading off the reception room and off street parking.

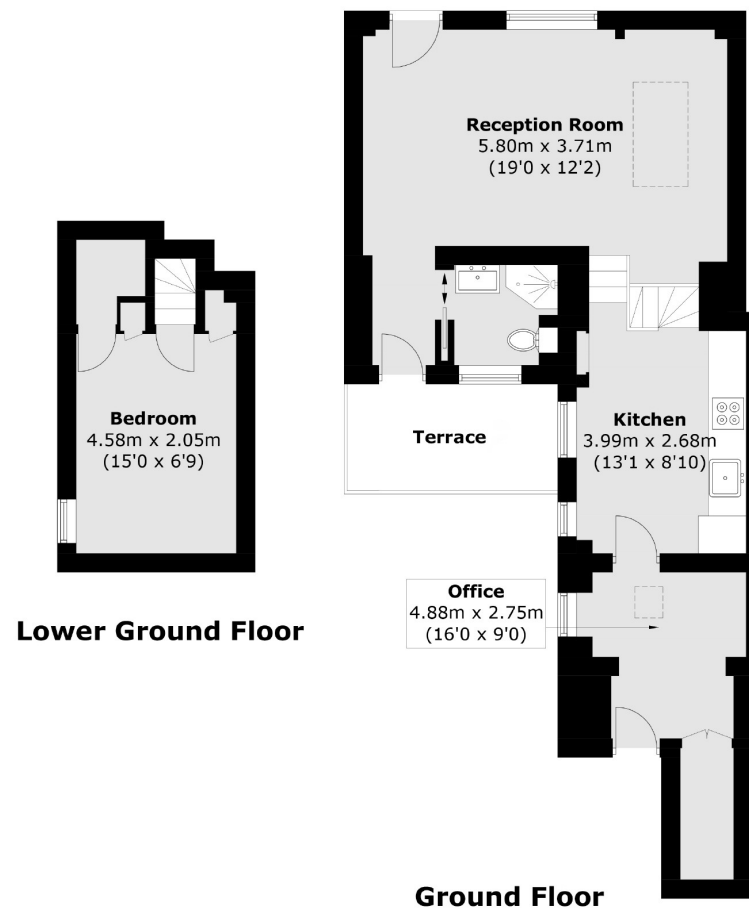
Eccleston Square is an exclusive residential address on the borders of Belgravia and one of Pimlico's most favoured locations. Residents benefit from access to the highly sought after award winning private square with its beautifully maintained gardens as well as it's tennis court and active community. This property would suit all those looking for a Central London location close to not only excellent transport links such as Victoria Station with both underground and Gatwick express services, but also the superb shopping facilities the area has to offer, be that Elizabeth Street, Victoria Street or the recently redeveloped Cardinal Place shopping plaza.

KEY FEATURES

- Private Square
- Tennis Court
- Ground Rent: £30pa
- Service Charge: £3064 pa
- Grade II Listed
- Tax Band: F







Total area (approx.): 60.0 sq. m (645.9 sq. ft)
Terrace area (approx.): 3.7 sq. m (39.9 sq. ft)

Energy Rating: E. We aim to make our particulars both accurate and reliable. However they are not guaranteed; nor do they form part of an offer or contract. If you require clarification on any points then please contact us, especially if you are travelling some distance to view. Please note that appliances and heating systems have not been tested and therefore no warranties can be given as to their good working order.

ASKING PRICE: £695,000

PIMLICO

020 7828 4050

pimlicosales@jackson-stops.com

jackson-stops.co.uk

JACKSON-STOPS

