



GLOUCESTER STREET
PIMLICO

JACKSON-STOPS 

GLOUCESTER STREET PIMLICO, SW1V

ASKING PRICE: £850,000

A first-floor, two-bedroom, two-bathroom property in this sought-after portered block is offered to the market with secure underground parking in the Pimlico 'Grid,' SW1.

The property is on the first floor (with lift) and benefits from a portico balcony to the front, leading off the reception room. The building benefits further from underground parking, lock-up storage, and a porter, as well as having a well-run management firm. This development is widely regarded as one of the most desirable in the area. Since its inception, it has been popular with first-time buyers, buy-to-let investors, pied-à-terre purchasers, and downsizers.

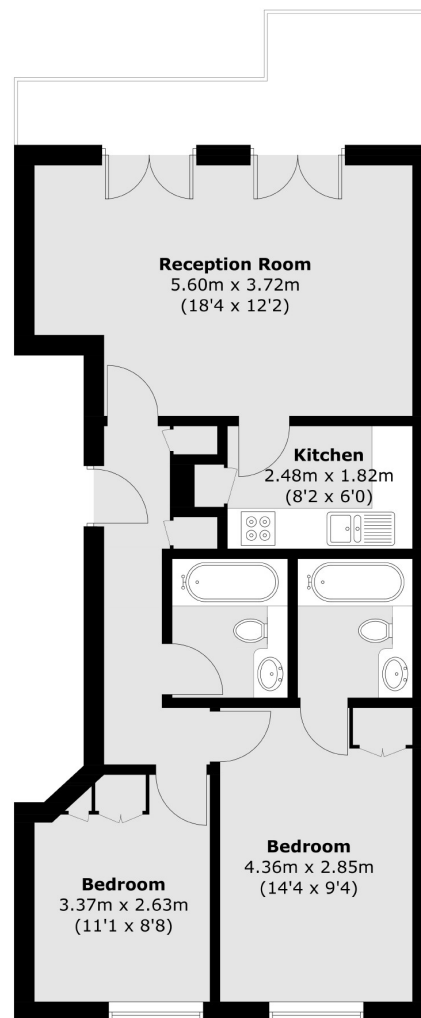
In terms of local transport, Victoria mainline station with Underground and Gatwick Express services is only 0.4 miles away, Sloane Square is approximately 1 mile away, and Battersea Park, with its 200 acres, is nearby at only 0.7 miles away.

KEY FEATURES

- Two Bedrooms
- Share of Freehold
- Balcony
- Underground Parking Space
- Service Charge: c. £4100 pa
- Inc Sinking Fund







First Floor

Total area (approx.): 62.9 sq. m (677.0 sq. ft)

Energy Rating: D. We aim to make our particulars both accurate and reliable. However they are not guaranteed; nor do they form part of an offer or contract. If you require clarification on any points then please contact us, especially if you are travelling some distance to view. Please note that appliances and heating systems have not been tested and therefore no warranties can be given as to their good working order.

ASKING PRICE: £850,000

PIMLICO

020 7828 4050

pimlicosales@jackson-stops.com

jackson-stops.co.uk

JACKSON-STOPS 