



**SLOANE STREET**  
KENSINGTON AND CHELSEA

**JACKSON-STOPS** 



---

## SLOANE STREET KENSINGTON AND CHELSEA, SW1X

ASKING PRICE: £923 PER WEEK

A spacious and well proportioned two bedroom property on the popular Oakley House, a well maintained block on Sloane Street.

Residents benefit from access to the beautifully landscaped Cadogan Place gardens. Just 0.3 miles from Sloane Square Underground Station, 0.5 miles from Knightsbridge Underground Station and Hyde Park.



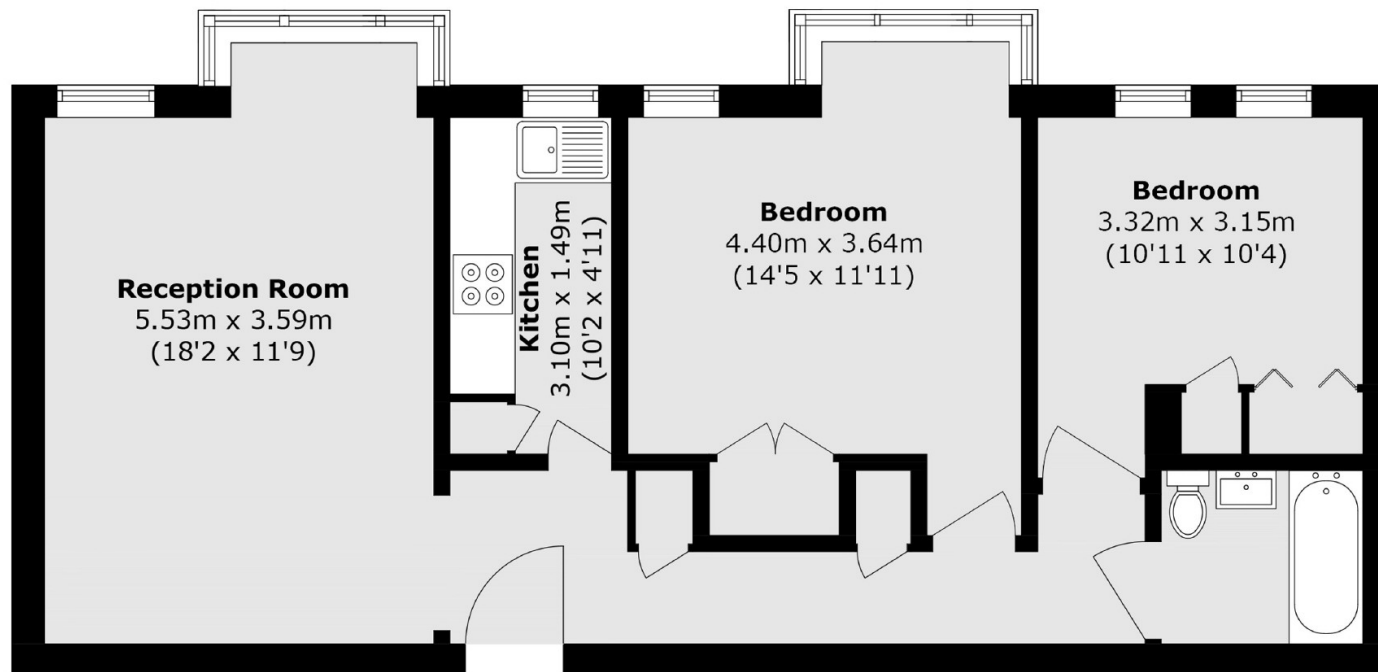
### KEY FEATURES

- Two Bedrooms
- Bathroom
- Kitchen
- Reception
- Lift
- Tax Band: G









Total area (approx.): 61.5 sq. m (661.9 sq. ft)

#### Fourth Floor

Energy Rating: C. We aim to make our particulars both accurate and reliable. However they are not guaranteed; nor do they form part of an offer or contract. If you require clarification on any points then please contact us, especially if you are travelling some distance to view. Please note that appliances and heating systems have not been tested and therefore no warranties can be given as to their good working order.

**ASKING PRICE: £923 PER WEEK**

PIMLICO

**020 7828 4243**

[pimlicolettings@jackson-stops.com](mailto:pimlicolettings@jackson-stops.com)

[jackson-stops.co.uk](http://jackson-stops.co.uk)

**JACKSON-STOPS** 