



CUMBERLAND STREET
PIMLICO

JACKSON-STOPS 

CUMBERLAND STREET, PIMLICO, SW1V

ASKING PRICE: £625,000

A beautiful first floor apartment is offered to the market in Pimlico, SW1.

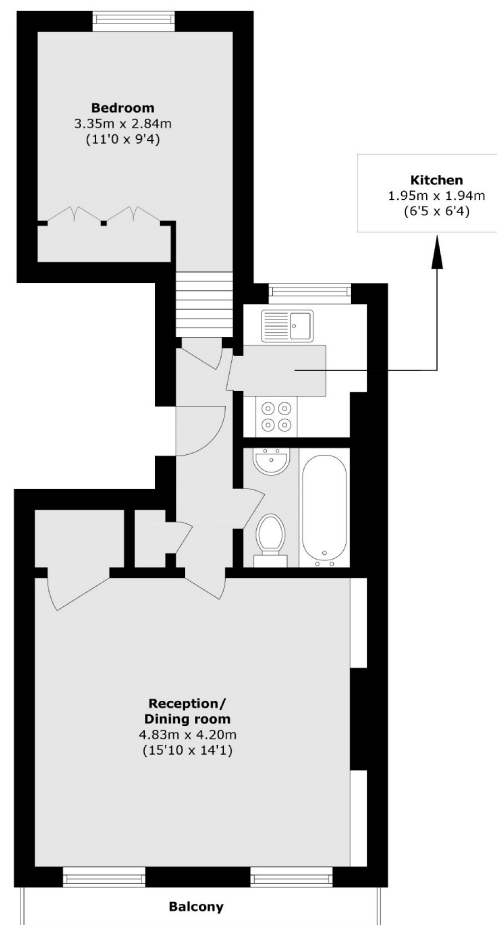
This well presented home features a bright reception room opening onto a private portico balcony through elegant floor-to-ceiling sash windows. Bathed in natural light and set within the quiet Pimlico grid, it offers a peaceful retreat in central London. With no onward chain, it makes an ideal first-time buy, pied-à-terre, or long term investment.

Cumberland Street is conveniently located just 0.5 miles from Victoria station, 0.7 miles from Sloane Square, and 0.6 miles from Battersea Park, providing excellent transport links and access to green space.

KEY FEATURES

- Leasehold: 106 Yrs Left
- Balcony
- Service Charge: £3793 pa
- Ground Rent: £250 pa
- Tax Band: E
- Sole Agent

Energy Rating: C. We aim to make our particulars both accurate and reliable. However they are not guaranteed; nor do they form part of an offer or contract. If you require clarification on any points then please contact us, especially if you are travelling some distance to view. Please note that appliances and heating systems have not been tested and therefore no warranties can be given as to their good working order.



First Floor

Total area (approx.): 43.4 sq. m (467.1 sq. ft)

Balcony (approx.): 2.8 sq. m (30.1 sq. ft)

ASKING PRICE: £625,000

PIMLICO

020 7828 4050

pimlicosales@jackson-stops.com

jackson-stops.co.uk

JACKSON-STOPS

