



MORETON TERRACE MEWS SOUTH
PIMLICO

JACKSON-STOPS 

MORETON TERRACE MEWS SOUTH PIMLICO, SW1V

ASKING PRICE: £807 PER WEEK

Charming 2-bedroom, 1-bathroom mews house in the heart of Pimlico's Moreton Triangle, featuring a private roof terrace and bright living spaces. Ideally located near Pimlico Station and local amenities.

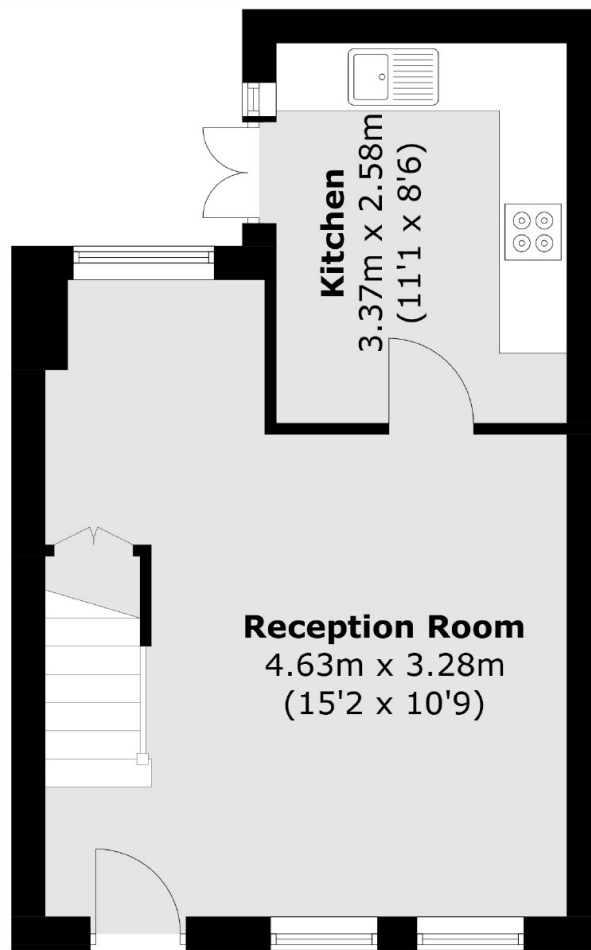
Just 0.2 Miles from Pimlico Underground Station, 0.5 Miles from Victoria Station, 0.7 Miles from Vauxhall Station and 0.9 Miles from St James' Park Underground Station.

KEY FEATURES

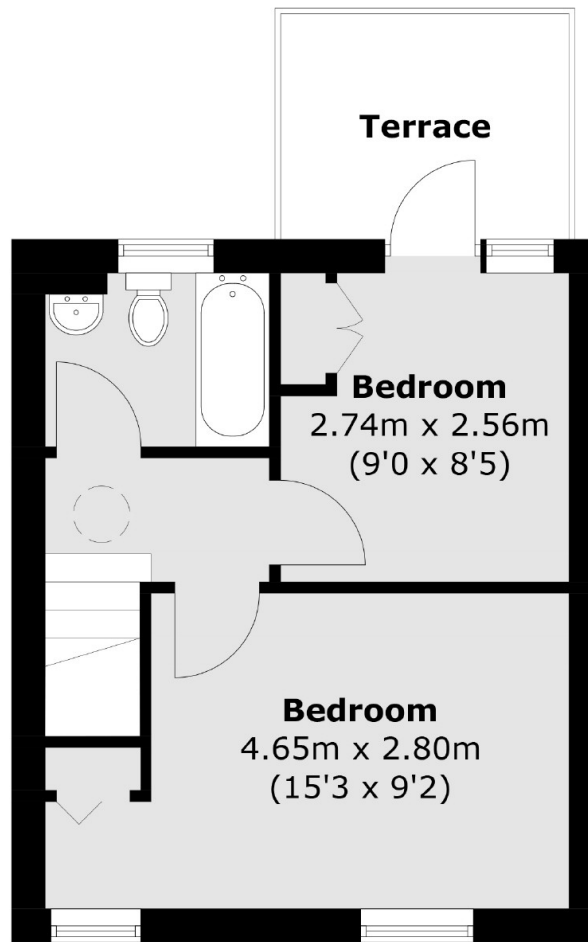
- Kitchen
- Reception Room
- Two Bedrooms
- Roof Terrace
- Mews
- Tax Band: G







Ground Floor



First Floor

Total area (approx.): 57.6 sq. m (620.3 sq. ft)
Balcony area: 5.1 sq. m (54.9 sq. ft)

Energy Rating: D. We aim to make our particulars both accurate and reliable. However they are not guaranteed; nor do they form part of an offer or contract. If you require clarification on any points then please contact us, especially if you are travelling some distance to view. Please note that appliances and heating systems have not been tested and therefore no warranties can be given as to their good working order.

ASKING PRICE: £807 PER WEEK

PIMLICO

020 7828 4243

pimlicolettings@jackson-stops.com

jackson-stops.co.uk

JACKSON-STOPS 