



ST. GEORGES SQUARE
PIMLICO

JACKSON-STOPS

ST. GEORGES SQUARE, PIMLICO, SW1V

ASKING PRICE: £595,000

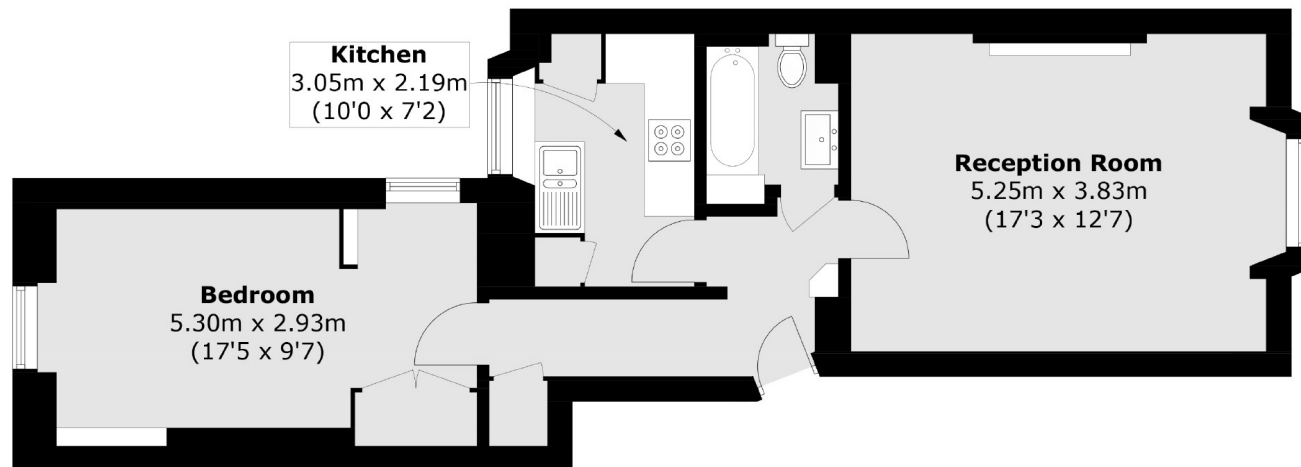
A superb and nicely proportioned one bedroom ground floor apartment is presented to the market in Pimlico's St George's Square, SW1.

Offered with no onward chain and benefiting from superb ceiling height, generous room sizes and tremendous natural light, as well as an enviable location. The property further benefits from a share of the freehold with its quiet location and close proximity to St George's Square and the River Thames. Pimlico Underground is only a 3-minute walk while Victoria mainline and Underground is only 0.7 miles away, and the 360, C10, and 24 bus routes are very close by on Lupus Street and Belgrave Road. Battersea Park, with its sports centre and wide-open spaces, is also less than 1 mile away, and one should not forget the cultural delights of the Tate Britain.

KEY FEATURES

- Share of Freehold
- One Bedroom
- Service Charge: £3600 pa
- No Onward Chain
- Grade II Listed
- Sole Agent

Energy Rating: D. We aim to make our particulars both accurate and reliable. However they are not guaranteed; nor do they form part of an offer or contract. If you require clarification on any points then please contact us, especially if you are travelling some distance to view. Please note that appliances and heating systems have not been tested and therefore no warranties can be given as to their good working order.



Ground Floor

Total area (approx.): 52.1 sq. m (560.8 sq. ft)

ASKING PRICE: £595,000

PIMLICO

020 7828 4050

pimlicosales@jackson-stops.com

jackson-stops.co.uk

JACKSON-STOPS 