



ST. GEORGES DRIVE
PIMLICO

JACKSON-STOPS 

ST. GEORGES DRIVE PIMLICO, SW1V

ASKING PRICE: £575 PER WEEK

A two double bedroom property in the heart of Pimlico.

The flat benefits from wooden style floors throughout and a lift in the building. Just 0.3 miles from Pimlico Underground Station, 0.6 miles from Victoria Station, 0.8 Miles from St James' Park Underground Station and 0.9 Miles from Vauxhall Station.



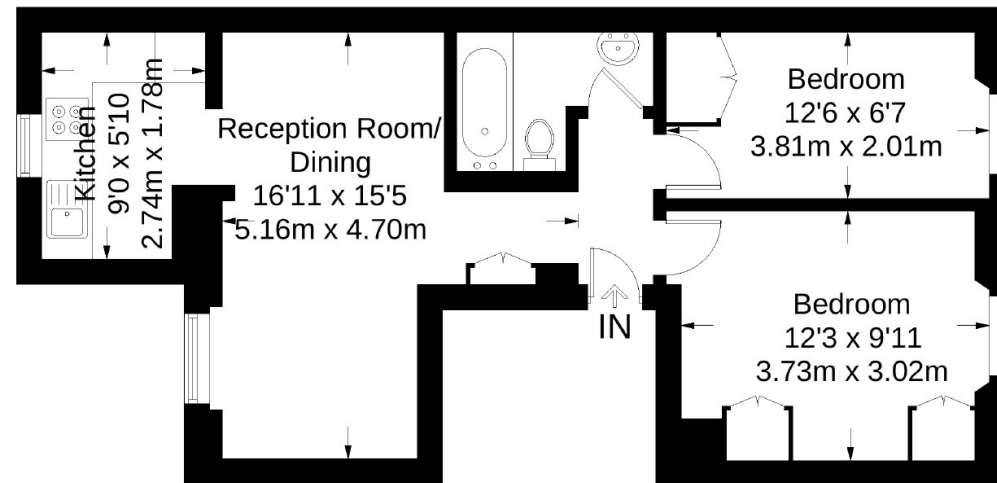
KEY FEATURES

- Two Bedrooms
- One Bathroom
- Reception
- Furnished
- Lift
- Tax Band: D



St. Georges Drive

Approximate Gross Internal Area = 514 sq ft / 47.7 sq m



Third Floor

Not to scale, for guidance only and must not be relied upon as a statement of fact.
All measurements and areas are approximate only and have been prepared in
accordance with the current edition of the RICS Code of Measuring Practice.

Energy Rating: C. We aim to make our particulars both accurate and reliable. However they are not guaranteed; nor do they form part of an offer or contract. If you require clarification on any points then please contact us, especially if you are travelling some distance to view. Please note that appliances and heating systems have not been tested and therefore no warranties can be given as to their good working order.

ASKING PRICE: £575 PER WEEK

PIMLICO

020 7828 4243

pimlicolettings@jackson-stops.com

jackson-stops.co.uk

JACKSON-STOPS